

Council passes library agreement

■ The amended agreement resolves the thorny issue of liability insurance.

By Eric Bowen
Staff Writer

With little fanfare or discussion, Chelsea Village Council passed the amended district library agreement Dec. 22, bringing Lima and Lyndon townships into the district.

The final form of the agreement comes nearly a year after it was signed by the original three municipalities and is the result of months of discussion on such sticky issues as liability and representation on the district library board.

What's left to do now is for Sylvan and Dexter townships to sign on to the agreement. Both townships have the measure on the agenda for early January.

The amended agreement resolves the thorny issue of liability insurance. Lima and Lyndon asked for as a requirement for their entering the agreement. Both townships wanted to be absolved of responsibility for lawsuits arising from the McKune House's lack of disabled access and for possible pollution on the site, according to a letter from Dexter Township Supervisor Robert Tetens.

When Lima and Lyndon asked for liability insurance, the original three municipalities felt all parties to the agreement should have the same coverage.

To facilitate the legal aspects of getting the insurance, Dexter and Sylvan townships passed a resolution of their intent to withdraw from the



Chelsea Village Council signed an amended district library agreement recently which will allow in Lima and Lyndon townships. The library will remain in the McKune House, though a task force has been set up to examine whether the house will fulfill the long-term space needs of the library.

original agreement at their recent board meetings. Dexter Township Supervisor Robert Tetens said it was necessary to drop out before they could sign a new amended agreement.

"We have to pretend to drop out in order for them to go into another agreement legally," Tetens said, calling the measure a "backward roundabout way of handling it."

Another issue resolved by the amendment is how the different townships and the village will be represented on the district library board. Each municipality will have one appointed representative

with two members appointed by the previous board.

Since the original three municipalities already have appointed board members, the agreement worked out a provision so that the board members who are already serving could remain. After their terms are up, the new rules would go into effect.

The amended agreement gives all five townships primary status in the district library. All of the people living in those municipalities fall within the boundaries of the district.

The agreement ensures, however, that some residents

in Dexter and Lyndon townships will not have to pay double for library service in other areas. The district is required to make every effort to allow residents who are not part of Chelsea School District to continue to be served by libraries in Pinckney and Stockbridge without having to pay extra for the services.

The library will ask voters for approval of a property tax increase to fund the operations of the library sometime next year. A minimum of .5 mills, or 50 cents on every thousand dollars of taxable property value, must be accepted by a majority of af-

fect voters before Nov. 15, 2000. If the millage is not accepted, the district will disband, and all the assets will return to the village.

Each municipality now pays for the cost from its own coffers, and will continue to do so until the millage is passed. Once a millage is passed, the money will be used only for library costs.

Chelsea Village President Richard Steele said the cost of the library under the new millage could be less than is currently charged by the village. Steele said the village originally charged 2 mills for library usage, but that has been rolled back since it was implemented to more closely approximate costs. He didn't know what the new millage would be.

"The cost depends on the needs of the library," Steele said. "But it is going to be more evenly spread out."

The amended agreement allows for new members in the future, though no other townships have expressed interest right now. If the millage hasn't been passed, each of the five municipalities votes has to accept the new member before it can enter. If the millage has been passed, the library board votes to accept the municipality and the residents of the new township must accept the millage for services.

The library will continue to be housed in the McKune House building. The library board has the option of moving if it needs require it.

The board formed a task force recently to study the space needs of the library and possible service increases for the community. The task force is in the early phases of planning.

Village buys communication equipment

■ Chelsea Village Council was apparently persuaded to buy the radios after hearing from the various department heads.

By Eric Bowen
Staff Writer

Despite the misgivings of Village Manager Jack Myers, the Chelsea Village Council voted to buy nine combination cellular phones and two-way radios, and two base units Dec. 22.

The price quoted each radio at \$199 and \$1,000 per base unit, plus a \$40 monthly serv-

ice charge. Each phone will have \$100 rebate and will come with a leather case for an additional \$25 each.

The money for the phones will come out of each department's budget. Myers said at the meeting that he liked the radios but that the village is looking at an expensive new phone system for the bank and thought the price was high.

"I'm of a mixed mind," Myers said of the Council's decision to buy the radios. "The cost is high. It seems like a lot of money."

The phones were proposed to the village at the last Coun-

cil meeting Dec. 9. Myers said then that he would like to try out the phones before recommending their purchase. State Electronics provided units for the village's consideration.

The Council was apparently persuaded to buy the radios after hearing from the various department heads in the village who related their feelings about the radios. Village Clerk Suzanne Morrison asked each official to say how their operations would be affected by the change.

The supervisors said they saw a lot of benefit from the radios. They are private and

can be used around most of Michigan. They also combine a cellular phone with a two-way radio, electronic mail and paging so some of the equipment the village pays for now can be eliminated.

The village also reimburses the officials for cellular phone calls made on personal systems. A village-owned system could reduce charges there.

Myers said, however, that the reduction in cost for the system may not be totally realized. Other village employees will stay on the current system, which means that department heads will have to

carry two radios to talk to them. The only item the new radios will eliminate are pagers.

Myers said that the phones would be given to each of the department heads, the village manager, the village engineer, the zoning inspector and a member of the police department. The base units would be housed in the village offices and the police department.

Each phone comes with a high-capacity battery that lasts about 12 to 14 hours and a desktop charger. The base units come with power sources

Farmer Jack working on design for grocery store

■ Developer is working with the Planning Commission to make the grocery store fit with the village's intention to keep the south corridor a nice entrance to the village.

By Eric Bowen
Staff Writer

Gary Yunker, a representative from Wolf Creek Development, asked Chelsea Village Council Dec. 22 to clarify its position on the proposed Farmer Jack grocery store in the south end of town.

Yunker said he was working with the village Planning Commission to build the Farmer Jack in the South Main corridor and asked if the Council would allow a simultaneous development of condominiums to be built along the golf course behind the food store. The additional development was asked for by developer Rene Papo, who owns the property Farmer Jack intends to build on.

Trustee Frank Hammer said the idea of building condos behind the Farmer Jack had been discussed as an option, but would require variances from the Zoning Board of Appeals before it could be allowed. The use of the land in a joint development would be a legal use of the land as far as the zoning goes, but the condos would have no access to a

road, so they would have to share the entrance to the grocery store. Also, the approximately 1.5 acres would be a non-conforming lot.

Yunker said the condos were not on his agenda, but were talked about as a condition of buying the property. Yunker said his option to buy the property would run out soon and he was renegotiating the purchase.

Yunker said the Farmer Jack would likely use the land in a joint development with Chuck Beck to build an office and retail complex. The small piece of land behind the proposed store could be used as parking.

Although he wasn't ready to submit formal drawings and plans for the project, Yunker did reveal a few of the details of the development. He said he was working with the Planning Commission to make the grocery store fit with the village's intention to keep the south corridor a nice entrance to the village.

One property owner said at the meeting that he would be against the store if it were a

typical "chunk" building. Hammer assured the man that he was against that, as well, and was sure the Planning Commission would not allow that kind of building to be put in the location.

Yunker said Farmer Jack even went so far as to take pictures of downtown Chelsea to try to emulate it in the design.

"We are doing architectural design for the zoning and location," he said. "We are pursuing a streetscape-type design and want to know what the village might want to see on the property."

One problem with the development foreseen by the Council was the possibility that a grocery store might not be allowable under the south-corridor zoning. Hammer said the Council would get clarification from the lawyers so that Farmer Jack could build on the lot without resorting to a zoning change for the area.

Farmer Jack has been looking at the area for six months as a possible location for expansion, Yunker said. He said he hoped to have initial plans for the site submitted to the Planning Commission in early January.

Chelsea resident Carol Rauschenberger asked if



—A Trio of Friends—

Emily Schable, 6, of Chelsea met two new friends at Chelsea State Bank Dec. 20 as part of the bank's 100th anniversary celebration. A clown entertained children as Chelsea High School orchestra students performed for bank customers at the downtown branch.

The Chelsea Standard

ESTABLISHED 1871

BRIAN HAMILTON
General Manager/Editor

MICHELLE ROGERS
Associate Editor

ERIC BOWEN
Staff Writer

MARLA HEATLEY
Advertising Consultant

KRISTEN CARPENTER
Advertising Consultant

LYDIA JOHNSON Production Coordinator

SARAH STEELE, TERRY LINDSTEDT,
Customer Service



The Chelsea Standard and The Dexter Leader are published every Thursday by Heritage Newspapers. Business office at 20750 Old US 12, Chelsea, Mich. 48118. Periodical postage paid at Chelsea, Mich. 48118 under the Act of March 3, 1879. Postmaster: Send address changes to The Chelsea Standard/The Dexter Leader, 20750 Old US 12, Chelsea, Mich. 48118. Office hours are: 8:30-5:00 M-F

Information

313-475-1371/FAX 475-1413
E MAIL: standard@globalbiz.net

Subscription Rates:
\$20 per year

Deadlines:

Press Releases: Monday, noon
Display Advertising: Monday, 5 p.m.
Classified Advertising: Monday, 4 p.m.



National Advertising Representative
MICHIGAN NEWSPAPERS, INC.
827 N. Washington Ave.
Lansing, Mich. 48906

Uncle Apollo

Well, pretty soon now, Michigan will be tromping all over Pasadena, badgering the Rose Queens (or maybe wolverining them) and soaking up all the sun. While they're out there, they might have a talk with El Nino and have her send some of that sun out this way, as well. And maybe they should go talk to the surfer dudes that built the old high school and try to convince them that they should come get it.

Officially, the old 1997 guy will take that ghostly walk up to the big paid holiday in the sky and the new kid will trade his diapers for a business suit and take over operation of the Year. The Village Parents will renew their commitment to enforcing cow ordinances and making no decision on the village offices and the sun will doggedly refuse to rise for another month or so.

So this is a time to take stock of where we have been, to relax and renew for the coming year. Lemme see. We quit burning books this year

and decided to make a district library. Pretty amazing, when you realize that a couple of years ago, the village and townships couldn't even get together to spell library, and now they almost are one. And while we were at it, we kept educating adults while everyone around us gave up on them. Way to go, Chelsea! If we work really hard we might be able to make adults as smart as kids. That would be a real accomplishment. I remember when I was a kid, I knew a lot more than most adults. A lot more than I know today, when I think about it. In fact, if I knew now what I used to know before I didn't know it anymore, I'd definitely be a lot younger than I am today.

And that's how it ought to be. We all ought to do what the year does, ushering out the old and bringing in the new. Every year, 12 o'clock midnight on Dec. 31, everyone just forgets everything they know. Forgets how to be cynical and how to cheat and how to hate and judge others. Forgets to

watch the news so they can see all the bad stuff people do to each other, how the government rips us off and people sue each other for the dumbest things. We could all just start over and decide that for this year, everything was gone make sense. We would say what we mean and let other people get ahead of us sometimes and leave the poor cow alone and generally pretend that we like each other. We

could act like everyone lived in places like Chelsea, pretend that everyone has small-town values and the brilliance of teenagers. Maybe we'd get to like it. Maybe if we did, everyone would have a happy new year, every year, from now until all of the old guys from all the past years get together and put on their pink shades for the big Rose Parade at the end of time. Think about this, OK? And have one.

MAYA PLACE —The Gallery

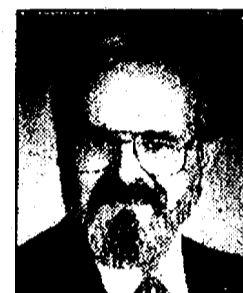
The Maya Place staff wishes to thank you for the pleasure of your friendship and goodwill. We wish you a wonderful Holiday Season and a New Year full of health, happiness and peace.



111 S. Main • Chelsea
Open Daily
(313) 475-0055



All the best for you and your farm . . .



Dave Rowe, CPCU
121 S. Main
Chelsea, MI 48118
Phone: 475-9184

from your Farm Bureau
Insurance Agent

Get all the protection you need — for your farm, yourself, and your family — from Farm Bureau Insurance. Serving farmers is our specialty. Call today.

Making your future
more predictable.

Letters to the Editor

Hunting can bring families closer together

Hunters and hunting have changed for the better.

Yes, Mr. Nabozny (letter to *The Chelsea Standard* Dec. 11), I have seen changes in hunting. We have much better and more accurate rifles, thanks to telescopic sights. We also have a much larger deer herd spread over the entire state, thanks to the changing habitat and the adaptability of deer. The DNR had nothing to do with the deer migrating south, nor could they have stopped it.

I certainly encourage people to take vacations and go hunting or fishing, and it's even better when they take their children with them. These sports not only provide great relaxation but can bring parents and children into closer family relationships. Some of the happiest days of my life were spent fishing and hunting with my father and grandfather. It's too bad that K.L. Simon and L. Nabozny didn't have the same opportunities. They might be a little bit better informed about hunting and hunters.

It is truly unfortunate that

such individuals choose to vilify their neighbors in such a manner. It is even more disgusting to think of the pedestals they have put themselves on so that they in their self righteousness might call us lazy, immoral, uneducated and unenlightened.

Why don't you come down from your lofty positions and go out and meet your neighbors. You may be surprised to find they are pretty decent people.

— Russ Reister

Hunting controls deer population

After reading a couple of letters from Chelsea landowners, I thought I should also write to clear up some misconceptions concerning deer hunting.

We have had our Webster Township farm for almost 50 years. When we moved here, there were no deer in the area. We saw our first deer on our farm in the late '50s. By the mid-1970s, sightings were common and 10 years later, the deer were overpopulated. There was no manipulation or

money given to us by the DNR.

The southern Michigan whitetail deer thrive off of farm crops, with hunting and automobiles being the only means of population control. Imagine trying to administer birth control to 2 million deer in a uniform fashion to avoid genetic alteration or serious side effects. This is a common idea among the anti-hunting groups, but it just won't work. Tampering with Mother Nature can be very dangerous once you have made her mad.

I spend a lot of time in the woods and almost all of the deer that I see killed are dead because of automobiles, not hunters. Although there are few exceptions, hunters are not the lazy slobs they are accused of being. Hunting requires patience, practice, countless hours in the woods and lots of hard work. The more time that you spend in the woods, the more you un-

derstand nature and respect it.

The most important thing to remember is that people are part of nature and the food chain. The anti-hunting groups tend to forget about human beings, conservation and recycling our natural resources. In the natural world, pain and suffering is the norm. But the most painful death is starvation. If you eliminate hunting, then automobiles, disease and starvation will be the only population control. These are not good alternatives. The very basic issue is population control, which will always be needed, and the best way to achieve this is through hunting, strictly monitored by the DNR biologists. We have been doing this for years and it works.

Mark Amsdill

To Place A Classified Ad Call
475-1371

Give us
a ring to place
a Classified Ad
475-1371

NOTICE

American Legion Post 31
Monthly Meeting Rescheduled to
Thur. Jan. 8th, 8:00 p.m.

25th Winter Carnival
Jan. 30, 31 & Feb. 1st

Law Office of Susan E. Zale



475-5777

114 N. Main
Suite 10
Downtown
Chelsea

- **ESTATE PLANNING & PROBATE:** including wills, revocable & federal estate tax planned trusts, health care directives & powers of attorney
- **REAL ESTATE:** including sales or purchases of residential & business property; for sale by owner; title problems; easements & deed restrictions
- **SMALL BUSINESSES:** including choice of entities; business startups and succession planning
- **SENIOR'S/ELDER LAW:** including planning for retirement, long-term health care, incapacity, your rights regarding retirement/nursing homes and health care decisions



THE
TRAVEL
COLUMN
with Joy Leltz



CRUISE DINING "A LA CARTE"

If there's one thing that almost everyone mentions when talking about taking a cruise, it's the fabulous food. Buffet tables piled high with every imaginable delicacy, menu entrees cooked to order by world-class chefs—a cruise ship's dining room is almost worth the trip all by itself. These days there is even more to offer on many cruise lines, as the trend toward providing alternative dining picks up steam. As cruise ships have gotten bigger and bigger, most have stepped up efforts to keep the cruising experience as personal and intimate as possible, and that means offering a variety of specialty restaurants as options to the more formal dining room. If you don't feel like dressing for dinner, you might pop in at a charming little Italian restaurant. Looking

for something light but adventuresome? Sample the delicacies at a Japanese seafood bar. Reservations may be recommended.

At UNIGLOBE CHELSEA TRAVEL, INC., we work with you to determine just what kind of cruise will best fit your idea of a dream vacation. Looking for fabulous dining? Exciting destinations? Just getting away from it all? We've got great ideas and lots of experience with the various cruise lines and packages available today. Forget the hassles and save money too—our services cost you nothing at 1070 South Main Street. Call 475-3110 and find out about the many money-saving travel opportunities available today in cruises, packages, business travel, escorted tours, and more.

HINT: There is often no extra charge for dining at one of a cruise ship's specialty restaurants.

What's bothering you?

In an effort to find out what you, the readers, think should be addressed in our community, *The Chelsea Standard* would like you to take a few minutes to answer these questions. We hope this survey will give you a chance to tell us what you think, and we will commit to covering your concerns.

We will run the survey through the month of December and will report the results, using the results to create an agenda for our community.

Please return the surveys to *The Chelsea Standard*, 20750 Old US-12, Chelsea, MI 48118. Or fax them to us at 475-1413.

1. What are the most significant problems you run into in your daily life? Please be specific. _____
2. What things in the area improve your quality of life, and what detract from it? _____
3. What do you think could happen in the future that would make your quality of life better or worse? _____
4. What questions would you like to ask your elected officials, such as the school board, council or township board? _____
5. What has changed for the better or worse in the last year? In the last 10 years? _____
6. What do you think is the greatest challenge facing our area? _____
7. How should your concerns be reported? Who should we talk to about them? Please be specific, list agencies or people with whom we can speak instead of general categories. _____

Optional

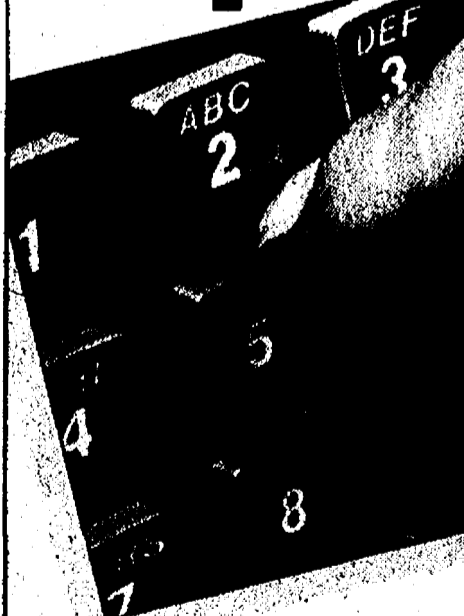
The Chelsea Standard would like to contact you about your concerns. Please give us the following information:

Name: _____

Address: _____

Phone: _____

Help is at your finger- tips



We have the answers to
all your concerns about
living with neuromuscular
disease.

Getting help couldn't be
easier. Our lifeline is
toll-free.

THE VOICE OF HOPE

1-800-
572-1717

MDA®

MUSCULAR DYSTROPHY
ASSOCIATION



—Hospital Auxiliary Donates to Silver Maples—

Chelsea Community Hospital Auxiliary presented a check for \$10,000 to Silver Maples, the new facility for senior citizens. The funds will be designated later. Receiving the check is Art Dils, Silver Maples CEO. Presenting the check are auxiliary members, from left, Mary Alice Kalmbach, Margaret Kuhl and Mary Harris. Silver Maples opened in November with 48 apartments for independent living. Another 62 apartments for assisted living are opening in February. Silver Maples is a joint venture between Chelsea Community Hospital and the United Methodist Retirement Communities.

Beach student places in SEC bee

By Eric Bowen
Staff Writer

Loquacious, L-O-Q-U-A-C-I-O-U-S, Loquacious. That's the wordy word that helped put Beach Middle School eighth-grader Emily Havens number three in the Southeastern Conference spelling bee recently.

Havens competed against eighth grade students from seven other schools in the conference. Havens said she enjoys the competition she gets from the other students.

"I thought it was fun," Havens said. "I like to spell in some kind of competition, because we don't get that in English class."

To get to the conference spelling bee Havens first had to take a spelling test in her classroom. Test takers with high enough scores were entered in the school-wide bee with the top five finishers going to the conference spelling bee in Dexter.

The students competed against others of their grade level. Each was asked to spell a word out loud and was given the option of having it put in a sentence or defined.

To prepare for the spelling bee, Havens studied a list of words that would be used in the competition. She spent four nights learning four pages

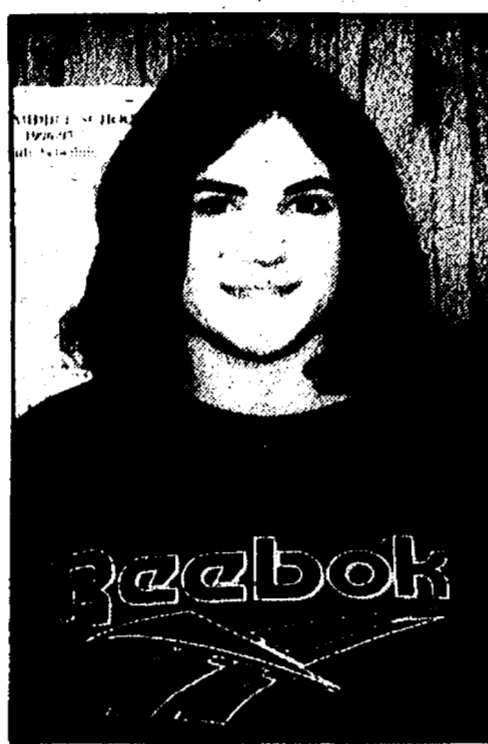
of words on the list. She said she didn't really have a trick to her success, just a lot of memorization.

Her second year in the contest, Havens said she has gotten to know some of the other spellers and has developed a rivalry with one.

"You remember people from last year who you had to worry about," Havens said. "I wanted to beat the girl who beat me last year, and she came in lower down the scale."

Havens said that she has not heard of a spelling competition at the high school level, so her spelling career ends with this competition. But she said for the two years she has competed she has gotten a lot of satisfaction.

"The most fun thing is to do a good job and have someone



Emily Havens

compliment you, especially from someone who did better," she said.

Farm facts

Japanese beef imports grew nearly 30 percent over last year's rate, reaching 64,291 metric tons with almost half originating in the United States. Sales of chilled beef were higher, according to USDA reports, suggesting that consumer confidence in the safety of imported meat may be strengthening.

Salmon, or anadromic fish, swim upstream every year from the ocean to freshwater stream banks to lay their eggs. As salmon move from saltwater to freshwater, they gain weight as their sea-salty bodies soak up the freshwater. At first, their kidneys can't get rid of salmon's bodies and kidneys are adjusted to the water change and their weight balances out.

Village buys communication equipment

(Continued from Page One)
and antennae. All units have a one-year warranty.

The Council's motion also authorized the purchase of chargers that plug into a car's cigarette lighter, though the price is still under negotiation.

Trustee Joe Merkel was

originally approached by State Electronics with the deal, though trustee Jim Myles made the motion to accept the purchase of the phones. Trustee Steve Daut was the lone holdout against the phones; everyone else voted for the purchase except trustee Richard Rigg, who was absent.

Farmer Jack

(Continued from Page One)

Farmer Jack had considered serving the north side of town by building in that area, but Yunker said the market studies showed the south portion of the village to be better suited Farmer Jack's success.

In other business at the meeting, the Council lifted a stop-work order placed on Village Place Condominiums. The order had been placed to induce the company to increase the height of its detention pond.

The Council also was concerned that the pond had a smaller exit pipe than originally planned. But Trustee Steve Daut said the county has agreed to the pipe and filtration system so the village has no liability for damage.

Also at the meeting, the Council appointed Village Manager Jack Myers to the post of village assessor so he can officially fill out state forms.



Watercolor Portrait of Your Home

Susan Craig
313.475.7886

GEE FARMS

Open Year 'Round

FRESH PRODUCE
Bird Feed and Feeders

14928 Bunkerhill Rd.,
Stockbridge
(517) 769-6772
Hours: 8 a.m.-6 p.m. • 7 days a week

Dexter Senior Center Needs:

- Two, or more, working computers with hard drives (any brand); also Apple monitors, keyboards, mice (to go with LC hard drives). Help the Seniors catch up with the computer age with a donation of your old computer equipment. We need working equipment to practice on.
- Used piano bench
- Used, but good quality, pool table & pool cues.
- Carts on which to store and move folding chairs.
- Storage cabinets

Call Dexter Senior Center M-F between 11 a.m.-2 p.m. (426-7737) and let us know what you have to donate. Talk with Charlotte, or leave your name and ph.# and she will get back to you. Donations are tax deductible.

"IN-HOME BEAUTY CARE"

- IDEAL FOR HOME-BOUND OR ELDERLY
- LICENSED AND INSURED
- PRECISION CUTS- \$10.00
- CERTIFIED NURSING ASSISTANT

Marge Hawkins • 1225 Kernwood Dr. • Chelsea



Give us a ring to place a
Classified Ad
475-1371

JAMES BARRY

ACCOUNTANT & TAX ADVISOR

Business Accounting & Reports, Payroll
Personal Tax Planning & Return Preparation
Complete Accounting & Tax Service
for all forms of Business Ownership

9412 Horseshoe Bend • Dexter
Telephone: 426-2395

DAY OR EVENING APPOINTMENTS



Your Family Realtor

313-426-2517



1 ACRE BUILDING SITE - Totally wooded. Pinckney Schools. \$38,000. (O-WA)
PRIME BUILDING SITE - In Chelsea. Some wooded from 2.25 to 5.74 acres from \$46,000 to \$65,000.
1.06 ACRES - Zoned Village residential suitable for multi or single family. Fronts the Mill Pond, wooded, you don't even know you are in Dexter. Terms available. \$89,900. (28-BA)
HOWELL SCHOOLS - 3 acres \$39,000 & 4.72 acres \$45,000. (42-NO, 46-CU)
ANN ARBOR BUILDING SITE - on Brookside. 60x112x110x162 pie shape on paved roads with utilities. Great neighborhood for individuality. Close to M4 and Barton. \$40,900. (28-BR)
WOODED WALK-OUT BUILDING SITE - 42 acre with access to Sweeny Lake. Napoleon schools. \$34,900 (48-HA)
Call Kathy Toth at 426-2517 or 257-4676.
Homepage: [http://www.mich.com/~realtor/KATHY TOTH](http://www.mich.com/~realtor/KATHY%20TOTH)
Community Associates
2699 Oak Valley Dr.

PET OF THE WEEK



Oreo is an adorable black & white 2-year-old female cat. She has been spayed, and she needs a good home. For adoption please call:

THE HUMANE SOCIETY OF HURON VALLEY
at 662-5585.



Keep your pet warm this winter with a polar fleece dog coat, blanket and a soft, warm dog bed.

Huron PET Supply

2890 Washtenaw, Ypsilanti (313) 434-1234
5060 Jackson Rd., Ann Arbor (313) 747-2575

Happy Holidays

from Ray, John, Dan
Chris and Ben at

Chelsea Bike & Sports



1178 S. Main St. • Chelsea
(313) 475-9371



Canon

Nikon

Minolta



Huron Camera

8060 Main St. • Dexter • 426-4654
450 E. Michigan • Saline • 429-8575
1090 S. Main St. • Chelsea 475-1023

Year-End Clearance

Lowest Prices of the Year
on Cameras and
Camera Accessories



Dexter



Photo by Mary Kumbler

—Students Bring Swing Set to Bates—

Fifth-graders Cole Hatch, Alex Kapela, Kevin Repine, Steve Cavanaugh and Josh Cebula received a mini-grant from Dexter PTO last year to bring swings to Bates Elementary School. They were on hand Dec. 18 to cut the ribbon and officially open the new playground equipment. The five boys managed the feat after gathering 150 signatures from their schoolmates. They selected the swing set from a catalog and developed a proposal, under the guidance of Jill Adams, to request the mini-grant. All five were students of fourth-grade teacher Stephanie Bell, who allowed them some class time to work on the proposal. The boys are pictured with Bell and Adams.

■ Dexter Township Board grants Sauer Drive Association variance to move forward.

By Michelle Rogers
Associate Editor

Dexter Township Board of Trustees has granted a variance from the Private Road Ordinance that will pave the way for the relocation of Sauer Drive.

At a meeting held Dec. 16, the Board reduced the 66-foot right-of-way requirement to 40 feet so the Sauer Drive Association can improve the alignment of Sauer Drive with North Lake Road.

The request was brought by local residents concerned over liability issues.

According to a letter dated Aug. 19, 1996, from Yvette Ware, supervisor of traffic and safety engineering for the Washtenaw County Road Commission, residents along Sauer Drive are liable in the event of a vehicle crash or

other unforeseen catastrophe.

Members of the association, according to Dexter Township Supervisor Robert Tetens, wanted assurances that a variance would be favorably received by the Board before moving forward with design work and construction documents to relocate the road.

Sauer Drive is maintained as a private road by the Sauer Drive Association. There are 30 property owners served by it.

According to a letter to Tetens from Sheridan Springer, treasurer of the association, a Sauer Drive resident contacted the Washtenaw County Road Commission several years ago with concerns about limited sight distance at the intersection of Sauer Drive and North Lake Road.

"After (an) investigation, (the) Washtenaw County Road Commission determined that one of the two large cement pillars protruded six to eight feet into the county right-of-way," Springer said. "The pillars have been removed, how-

ever at that time Yvette Ware, an engineer from Washtenaw County, asked that Sauer Drive be raised approximately six feet for a distance of 600 feet or relocated to another existing right-of-way."

Springer said members of the association voted at their annual meeting to proceed with relocation of the road because raising it appeared difficult to do and would still leave sight distance problems.

Moon 15 billion inches from Earth

Sky watchers contemplating the moon this month may wonder how far away it is. According to University of Michigan astronomer Richard Teske, the moon is 15 billion inches from Earth — give or take an inch.

Mix together the moon, four reflecting mirror arrays on its surface and five Earth-based telescopes firing laser beams and you have a recipe for one of the most accurate scientific experiments ever undertaken.

"Determining the moon's distance to within one inch is an extraordinary accomplishment," Teske said. "These exquisite measurements — a kind of scientific slam-dunk — are being used to test Albert Einstein's theory of gravity."

The moon-measurement project is an international effort. Mirrors were placed on the moon's Earth-facing hemisphere by three teams of Apollo astronauts and by one of the unmanned Soviet Lunakhod missions. Telescopes used for beaming laser light at the moon are located in Texas, Hawaii, France, Germany and Australia.

In the experiment, laser radiation launched toward the moon from one of the telescopes on Earth bounces off one of the lunar mirrors and returns to the same telescope about 2.6 seconds later. Scientists determine the moon's distance by measuring as precisely as possible the time it takes laser pulses to make the round trip. Called laser ranging, the technique is equivalent to using radar, Teske explained.

At stake is the dependability of Einstein's theory of gravity as expressed through his complicated equations of relativity. The theory is used to predict the moon's distance from Earth from moment to moment as it orbits our planet once each month. The laser ranging experiment checks out those predictions with actual, accurate observations.

"Right now all is well with Einstein. Relativity's predictions seem to be correct, reinforcing physicists' beliefs that the theory is the best description we have for how nature operates," Teske said. "But there are other theories of gravity that also are being examined by the experiment, and it is still too early to rule them out altogether. Since the laser ranging experiment will go on for a few more years, we might eventually find that one of those theories is preferable to Einstein's. If so, science will have taken a great stride in our understanding of how the universe works."

Keeping track of the moon as it orbits around Earth is tricky, Teske added. In addition to our planet's gravita-

tional pull, the moon is strongly tugged by the sun and weakly attracted by all the planets and even some small asteroids. As a result, it meanders a lot during its month-long orbit. A further complication is that the moon doesn't simply circle around Earth's center.

"Both Earth and the moon circle one another around a common point that is located 1,025 miles beneath Earth's surface," Teske said. "As our planet rotates on its axis that point travels through solid rock with the speed of a jet airplane, but with no discernible effect upon us or the Earth."

Gravity experimenters also take into account the fact that the moon's orbit is gradually moving farther and farther away in response to the slowing down of Earth's rotation. The slowing of our rotation is why we insert an extra second into the stream of time almost every year making the last minute of December 31 last for 61 seconds. After many millions of years, the length of the day/night cycle will approach one month.

"Both cycles will finally fall into step in the dim, far future when the Earth will keep the same face toward the moon just as the moon now keeps the same face toward us,"

Teske said. "Perhaps by then nobody will much care whether Albert Einstein was right."

David Berry

- Custom Homes
- Trim • Decks
- Siding • Repairs
- Additions
- Licensed
- Insured



20338 KAISER RD.
GREGORY, MI

(313)
498-3696

Hafner Antique & Craft Mall

Large Antique and Craft Mall
Currently 23 dealers and growing
Furniture • Collectibles • Glassware • Primitives

Dealers Wanted
Prime North Main St. & 4th North St. area
Other areas available to suit your needs

5000 S. Clinton (Intersection of M-58 and M-106)
(517) 851-7677 • Open daily 10am - 6pm

Learn about the

LIVING TRUST

Why a Will is no longer the best estate plan

Call to schedule a free, no obligation private conference with Ronald Sharp, local attorney since 1975 specializing in Living Trusts, Probate, Wills and Estate Planning.

- How to Avoid Probate
- New Tax laws affecting inheritance
- How to save or eliminate estate taxes
- Why we all need a Power of Attorney
- How to avoid Guardianship of adults
- How to name a guardian for your children
- Recent changes in probate law

Call for your FREE personal appointment
RONALD SHARP, ATTORNEY
426-0420
8099 MAIN STREET, DEXTER

Anna's
Unique Gifts

Store Wide Clearance

Now In Progress

401 N. Mechanic • Jackson, MI
(517) 783-6014

Introducing
GE Profile Performance SmartWater™
Water Softening System

Large Capacity Water Softening System

GNSF23Z
• 23,000 grain capacity. Holds 200 lbs. of salt
• Easy installation, easy to set controls
• Demand-initiated regeneration

Extra-Large Capacity Water Softening System

PNSF31Z
• 30,800 grain capacity. Holds 200 lbs. of salt
• Easy installation, easy to set controls
• Demand-initiated regeneration

\$699
only +tax & installation

\$799
only +tax & installation

Water Softener Hospital
731 W. Michigan Ave., Saline
We service all makes & models. • Sales • Rentals • Service
"Over 30 Years of Experience in Water Treatment"
Call 1-800-224-2528 or (734) 429-5070

Palmer Insurance

"WE WANT TO BE YOUR INSURANCE PEOPLE"

Auto Owners has just what you have always wanted.
A discount for having your Auto & Home Insurance Policies with the same company!

Better Price! More Convenience! Over 100 group discounts available.
Get out your existing auto policy and call us today for a quote.

FOR ALL YOUR INSURANCE NEEDS
313-426-5047 3074 Baker Road Dexter, MI 48130 800-875-5047

CHELSEA LUMBER CO.

Create the room of your dreams. Decora® cabinetry gives you the distinction and value with an affordable price.

Decora

Visit our showroom or call us for an appointment.

CHELSEA LUMBER CO.
OLD BARN CIRCLE
CHELSEA, MI 48118
313-475-9126

we are located just north of I-94 in Chelsea

CHANGING YOUR ADDRESS?
PLEASE NOTIFY US IN ADVANCE

Yes, I want to subscribe to:

The Chelsea Standard ☐ ✓

THE DEXTER LEADER ☐ ✓

Fill out this form and return to: Chelsea Standard/Dexter Leader, 20750 Old US 12, Chelsea, MI 48118.

Name _____

Address _____

City _____ ZIP code _____

Subscription rates are \$20 per year. Please remit subscription payment with this form. Other length subscriptions available upon request.

'Titanic,' 'Scream 2' garner favorable reviews

"Titanic"

Movie Review

By C.J. Nodus
Heritage Newspapers

The time-honored tradition of setting a love story against the backdrop of history often can be the stuff of movie legends - "Gone With the Wind," "Casablanca" and now James Cameron's "Titanic."

Make no mistake about the end of the film, the ship sinks, but Cameron's magic in taking us from the present to the past and back again is what makes this an epic film.

He opens the movie with a fascinating dive on the ship in present day and is able to show actual doors, mantles and chandeliers. Then, the transformation to 1912 occurs.

Through the character of Brock Lovett, played by Bill Paxton, all of the resources of the modern technological age are laid at the feet of the great ship. He is attempting to find one of her hidden treasures, a fabulous necklace and discovers a fabulous story.

Cameron also created the character of the aged Rose Calvert. Through her 101-year-old eyes, the fabled voyage comes to life. She is well played by 87-year-old Gloria Stuart, who starred in dozens of movies from 1930 until 1941, when she retired.

The young Rose is wonderfully played by Kate Winslet. She is sweet and passionate and plays her part well, especially when transformed by Leonardo DiCaprio.

For his own part, as Jack, DiCaprio represents the other side of the tracks. Winning his passage in a poker game, he should never have mingled with the upper class but found the young socialite Kate as she was about to take the plunge to get away from her smothering fiancé, Cal, played by Billy Zane.

Jack decides that if she goes, so will he. He convinces her there are things worth living for and that he can help her find them. Thus, a beautiful and rich love story develops, despite their financial differences.

Cameron takes the audience from the state rooms of the rich and famous to steerage effortlessly and richly. Through the relationship of Jack and Rose, there is enough material for an entire film with a life of its own.

Part of this richness is due to an outstanding supporting cast, including Frances Fisher as Rose's mother, Kathy Bates as Molly Brown, Bernard Hill as Capt. E.J. Smith.

Billy Zane as the aforementioned fiancé is a wonderful villain. His henchman, Spicer Lovejoy, played by David Warner, is an excellent hatchet man.

Great casting also trickles through to cameos by Jonathan Hyde, Victor Garber, Danny Nucci and Suzy Amis.

The real star of the film, however, is the ship itself. Cameron had built a life-size replica of the legendary luxury liner as well as a seven-acre, 17-million-gallon water tank in which to sink her.

The computer simulations shown to old Rose at the outset of the film mirror the convulsions that Cameron put his actual creation through, so the

audience has a continuous thread tying it all together.

Curiously, the film is 30 minutes longer than the actual sinking itself but well worth the three hour and 14 minute running time. "Titanic" should at least garner 10 to 15 Oscar nominations and should be seen on the largest screen available.

Rated: PG-13

Grade: A

"Scream 2"

Movie Review

By John Miskelly
Heritage Newspapers

Sequels can succeed. Wes Craven has seen to that. Craven's new film, "Scream 2" brought thrills and chills with it to theaters and is bringing in cold, hard cash.

This film had expectations, unlike "Scream." The first one took theaters and moviegoers by storm. The second (in a possible long series) is just as good.

One drawback to "Scream 2" is that with its success, everyone in Hollywood with half an idea will attempt a slasher flick. They'll flood the market and tarnish the better ones.

It will be just like when "Halloween" hit theaters; then came the flood: the "Friday the 13th" series, "Prom Night" ad nauseum and the like.

"Scream 2" brings back the survivors - all of whom were nicked in one way or another in the first one - including Neve Campbell as Sydney, Courtney Cox as Gale Weathers, and David Arquette as Deputy Dewey.

Campbell and Cox could be the next great female action heroes, what with all that machismo they oozed during the final scenes.

The setting is Windsor University somewhere out west.

A movie tracing the real-life drama of Sydney (from the first film) has hit the theaters and someone starts another real body count.

As one ill-fated character points out: in a sequel, the body count must be higher (it is) and the death scenes must be bloodier (they are).

This film manages to intensely poke fun at itself while simultaneously telling a great story, including a plot twist.

The film has, of course, a few improbabilities, but not many and not that glaring. They are noticeable only to the discerning eye.

One great scene comes when the murderer takes the driver's seat of a car Sydney is in. The car crashes and Sydney and a friend must climb over the driver (the masked murderer) in order to escape.

Rated: R

Grade: A-

"Mousehunt"

Movie Review

By C.J. Nodus
Heritage Newspapers

It was inevitable that Dream Works Pictures, the new kids on the block in movie-making, would have a flat. It's just surprising it has come so fast in its existence.

"Mousehunt" is one of the worst movies of 1997 if not the decade. It stars Nathan Lane and Lee Evans as Ernie and Lars Smuntz, heirs to the Smuntz String Factory.

From the opening scenes of the dreary funeral in the pouring rain, the arguing between the two brothers that results

in the dropping of the casket, the flying of the body and its landing in the sewers, this film goes dreadfully wrong.

Slowly and painfully, the film finally gets to the fact that in addition to the string factory, the brothers also inherit a house.

First, brother Ernie (Lane) causes the death of the incumbent mayor in his restaurant on the eve of the mayor's re-election by poisoning him.

Brother Lars (Evans) is then thrown out by his wife, played by the funny Vicki Lewis of "NewsRadio," in a wasted cameo role. The two decide to go check out their house.

The building is a dilapidated old mansion that the two quickly find out is firmly controlled by a mouse. The mayhem, with even less of the mirth, then begins.

After they try "one mean pussy" for entirely too brief a period, they engage an exterminator, pathetically played by Christopher Walken.

Between the psychotic cat

and the neurotic exterminator, the film bounces between "Babe" and "Hellraiser" in its efforts to get the mouse. At times, the movie is truly terrifying for the audience it is looking to attract.

Enter the fact that the house was the last one built by some exotic architect, and the story gets murkier and murkier. It all culminates with a multi-million dollar auction for the house, which is still controlled by the mouse.

In addition to Lewis, the stellar supporting cast includes Eric Christmas, Michael Jeter and the late William Hickey. Hickey died a few weeks after completing work on the film. For such a fine actor, it is a sad way to close a 40-year career.

Rated: PG

Grade: D

Give us
a ring to place
a Classified Ad
475-1371

CHANGING YOUR
ADDRESS?
PLEASE NOTIFY
US IN ADVANCE

"Grass Lake Lions Bingo"
Grass Lake Lions Club
Monday Nights
Early Birds 6:30 p.m.
Regular Bingo 7:00 p.m.
715 South Union St.
Grass Lake, MI (517) 522-4035

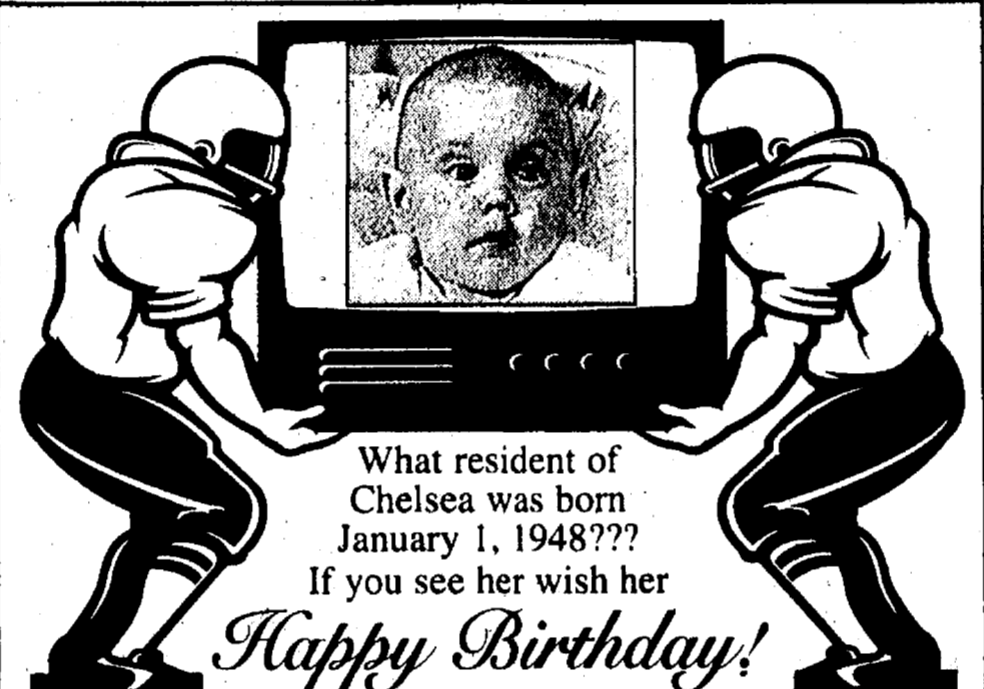
Gary Koch Construction Company



LICENSED & INSURED

- REMODELING
- GARAGES
- POLE BARN
- CONCRETE
- SNOW PLOWING

(313) 426-0660



What resident of
Chelsea was born
January 1, 1948???

If you see her wish her

Happy Birthday!

Trust your precious gift of sight to
William M. Hawks, M.D.



Participates with Medicare, BCBS, MESSA, Care Choices,
M-Care and Major Insurance Plans

Now with two convenient locations to serve you



CHELSEA
(313) 475-5970

ANN ARBOR
(313) 434-8000

WANTED

New & Used Car Buyers!



Paul Tomshary

Do Business With a "Pro"
Why Do Business With Me?
• Ambassador Club Winner 5 years
• Master's Club Winner, 5 years
• No. 1 Ford Salesman in Washtenaw County, 5 years
• Highest Customer Satisfaction Rating of any Ford Sales.
• NADA Certified.

MIKE KUSHMAUL, JR.

is looking

for those who want to get the most for their money...

Come in and see Mike for a great deal on a new or used, car or truck.



Neil Horning

- Lifelong Resident of This Area
- PAST President of Kiwanis
- Ford Certified Salesperson
- NADA Society of Automotive Sales
- Ambassador Award-Customer Satisfaction
- Society of Automotive Sales Professionals

PALMER
Michigan's Oldest Ford Dealer



Open Mon.-Thurs. till 8 p.m. Fri. till 6 p.m. Sat. till 3 p.m. 475-1301
Just minutes away. I-94 to M-52, North 1 1/2 miles downtown

What if Your Bed Partner Snores?

A free overview of sleep disorders will be discussed by Dr. James Weintraub of Michigan Head Pain and Neurological Institute. Wednesday, January 14, 7-8:30 p.m.



Chelsea
Community
Hospital

A free community lecture
offered by "Live Well"
CCH Dining Room
Refreshments Available
Call 475-4103 for information.



103 W. Middle St. • Chelsea

— 475-6081 —

MON.- FRI. 5:30 AM- 2:00 PM • SAT. 6:00 AM- 2:00 PM
SUNDAY 7AM-1PM

ENJOY OUR SMOKE FREE ENVIRONMENT

World Coffee: Papua New Guinea
Serving the Finest Coffees & Espresso

Try Our Steamers! Over 20 Flavors Available

Join us for lunch

• 2 soups daily • Sandwiches

12/31 Closed at 12:00 noon • 1/1/98 & 1/2/98 Closed



DEXTER MILL
Est. back in '79



Lose The Crowds!

- Fine Gifts-Case Collector Knives
- Bird Feeders
- Split Baskets from New England
- Carhart Outer Wear
- Gloves
- Paper White Narcisses



Feels Right. Right away.
Case Pocket Worn Knives



If ya get tired sit in our antique barber chair and have a coffee. (bye)



Knowledgeable Staff
Old Time Flavor & Prices
An honest
out-fit to shop at.

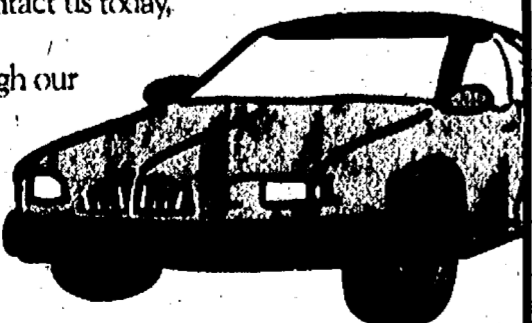
Hours: Monday-Friday 8-6:30
Saturday 8-5:00
3515 Central St. • Dexter, MI
(313) 426-4621

Mature drivers, it's our
policy to save you money.

When you insure your car with us, through Auto-Owners Insurance Company, we'll save you money! Statistics show that mature drivers experience fewer, less-costly accidents, allowing us to pass the savings on to you. Contact us today, and let us earn your loyalty through our quality service and products at

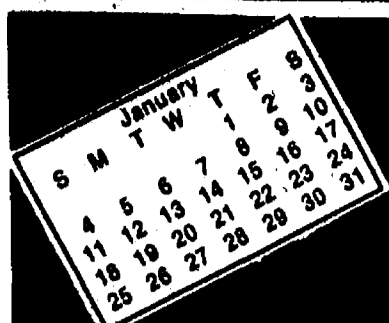
"No Problem" prices!

Auto-Owners Insurance
Life Home Car Business
The "No Problem" People



Springer Agency Inc.

115 Park St., Chelsea • 475-8689



COMMUNITY CALENDAR

CHELSEA & DEXTER

Give us
a ring to place
a Classified Ad
475-1371

Sunday, Jan. 4
"Annual Winter Pot-luck and Hike" at Park Lyndon South Cabin. Bring dish to pass and warm clothes for this hike and fireside pot-luck. (pets, alcohol and smoking prohibited). 10 a.m. Info: Matt Heumann, 971-6337.

Monday, Jan. 5
Chelsea Kiwanis Club meets at Chelsea Community Hospital, 6:15 p.m.

McKune Memorial Library Mystery Book Club meets at the library, 7:30 p.m.

Lima Township Board meeting at Lima Township Hall, 8 p.m.

Tuesday, Jan. 6
Rotary Club meets at the Common Grill, 12:10 p.m.

Lions Club meets at Chelsea Community Hospital, 6:45 p.m.

Sylvan Township Board meets at Sylvan Township Hall, 7 p.m.

McKune Memorial Library Board meets at Faith in Action building, 7:30 p.m.

Lima Township Zoning Board of Appeals meets at Lima Township Hall, 7:30 p.m.

Wednesday, Jan. 7
Chelsea-Manchester Chapter No. 108, OES meets at the Masonic Temple, 7:30 p.m.

Thursday, Jan. 8
Lyndon Township Planning Commission meets at the township hall, 7:30 p.m.

Chelsea Rod and Gun Club Auxiliary meets at the clubhouse, 7:30 p.m.

Dexter American Legion meets at the Dexter Legion Hall, 8 p.m.

Monday, Jan. 12
McKune Memorial Library Brown Bag Book Club meets at the library, 11:45 a.m.

Chelsea Kiwanis Club meets at Chelsea Community Hospital, 6:15 p.m.

Chelsea School Board meets in the board room, 7:30 p.m.

Tuesday, Jan. 13
Downtown Development Authority meeting in the Village of Chelsea council chambers, 8 a.m.

Chelsea Chamber of Commerce Board of Directors meets at Chelsea Community Hospital, noon.

Rotary Club meets at the Common Grill, 12:10 p.m.

Lyndon Township Board meets at the township hall, 7:30 p.m.

Chelsea Village Council meets at Sylvan Township Hall, 7:30 p.m.

Chelsea Rod and Gun Club meets at the clubhouse on Lingane Road, 7:30 p.m.

DEXTER

Saturday, Jan. 3
"January Bird Walk" at Hudson Mills Metropark to explore woodlands, fields and river edge for winter birds, 8 a.m. Pre-register, 1-800-477-3191 or (734) 426-8211.

"Colors in Winter" a hike at Hudson Mills Metropark, 1 p.m. Pre-register, 1-800-477-3191 or (734) 426-8211.

Monday, Jan. 5
Dexter Library Board meets at the Dexter District Library, 7:30 p.m.

Dexter Village Planning Commission meets at First of America Bank, 7:30 p.m.

Dexter Community Schools Board of Education meets at the Copeland building, 8 p.m.

Lima Township Board meeting at Lima Township Hall, 8 p.m.

Tuesday, Jan. 6
Kiwanis Club of Dexter meets at Shooters, 6:30 p.m.

Lima Township Zoning Board of Appeals meets at Lima Township Hall, 7:30 p.m.

Wednesday, Jan. 7
Dexter Merchants Association meet at First of America Bank, 6:30 p.m.

Dexter Families Anonymous Support Group meets at the Dexter United Methodist church, 7:30 p.m. Info: 426-8260.

Sunday, Jan. 11
"On Whitetail's Trail" at Hudson Mills Metropark. Short indoor program followed by an outdoor hike. Info., registration, 1-800-477-3191 or (734) 426-8211.

"Wonders of Winter, Inside and Outside" nature class for families at the Matthaei Botanical Gardens. Cider and donuts., 2-4 p.m. Registration and information, (313) 995-5439.

Monday, Jan. 12
Reproductive Health Advisory Committee for Dexter schools meets at Wylie Middle School media room, 7 p.m.

Harmony Rebekah Lodge 460 meets at the Masonic Temple, 7:30 p.m.

Webster Township Historical Society meeting, 7:30 p.m.

Dexter Village Council meets at First of America Bank, 8 p.m.

Tuesday, Jan. 13
Kiwanis Club of Dexter meets at Shooters, 6:30 p.m.

Sons of the American Legion meet at the Dexter Legion Home, 8 p.m.

MISCELLANEOUS

Philanthropic Educational Organization (P.E.O., women's educational support) chapter organizing in Chelsea. Info., Jo, 475-0542 or Ruth, 433-0528.

Overeaters Anonymous meets Mondays at First United Methodist Church, 7:30 p.m.-8:30 p.m. Info: 475-4264.

HIV/AIDS Resource Center offering free testing services in Lenawee, Livingston, Jackson and Washtenaw counties. For location and times call 572-9355.

Dexter Jaycees are looking for young adults ages 21-39 to join their club. Meetings are the second Wednesday of each month at 7 p.m. at First of America Bank, Dexter. For more Info., (313) 426-1080.

Play-N-Chat, a home-based group for moms and children under five years old. Meets Wednesdays and Fridays. For place and times call Jackie Esch 426-5437.

Chelsea Senior Nutrition Program at the Senior Center. To reserve lunch, call Arlene Larson a day ahead at 475-0160.

Waterloo Natural History Assoc. and State Recreation Area offers programs at the Eddy Geology Center, located on Bush Road, open 9-5 daily. A Michigan State Park Motor Vehicle Permit is required for entry. Daily \$4, annual \$20. Info: (313) 475-3170.

Parents Without Partners, support group for single parents. Youth activities, social events, discussion groups. For membership, call recording at 971-1933.

Home Meal Service, Chelsea. Meals served daily to elderly or disabled. Cost per meal, \$3.25 with milk, \$3 without milk, for those able to pay. Interested parties call Mary at 475-9494 or Faith in Action at 475-3305.

New Beginnings, a grief support group for people experiencing the loss of a loved one. Offered as a community service by the Chelsea Retirement, meetings are in the Crippen Building, first and third Wednesdays, 7:30 to 8:30 p.m. Info., Kearney Kirby, 475-2868.

Alcoholics Anonymous meets at St. Joseph Parish Hall in Dexter, Tuesdays at 8 p.m. and Thursdays at 7:30 p.m.

Immunizations through Washtenaw County Public Health, the Multi-Service Center in Ann Arbor. Info., (313) 484-7219.

Washtenaw County Health Dept. is offering free and low-cost immunizations, which meet state of Michigan standards for daycare and school settings. Infant and adult immunizations are also available. Call 313-484-7220 for an appointment.

Dexter Family Service, contact Pat Burnett, 313-449-2149, Marian Burgett, 426-2196, Shawn Detling, 426-4343 or Nellie Taylor, 426-4485.

Domestic Violence Project Safe House Support Group meets every Monday at Chelsea Community Hospital, Behavioral Health Services building, 6:30-8 p.m. Info: 426-0369.

Western Washtenaw Domestic Violence Drop-In Support Group meets Mondays at the Behavioral Health Building at Chelsea Community Hospital, 6:30-8 p.m. For women who are or have been in an abusive relationship. Info. and 24-hour crisis line, (313) 995-5444.

"Free mammogram and clinical breast exams" through the Washtenaw County Public Health Title XV program. Info: 484-7220 or 484-7200.

"Free Mammograms and Pap Tests" available for many women over 40 through Title XV Program. Info., (313) 484-7220.

New Beginnings, a support group dealing with death and divorce, meets Tuesdays at St. James Episcopal Church, Dexter, at 5:30 p.m. Call Faye Wisely, 426-

8931 or the church, 426 8247 for information.

Smokers Anonymous meets Tuesdays at St. James Episcopal Church, Dexter, 7:30-8:30 p.m. Call 426-8696.

Hospice of Washtenaw County needs volunteers for clerical support, direct patient care and spiritual bereavement support. Call Barb Wineka, 741-5777 for further information.

Faith in Action House Community

Center, open daily. Provides various free services to those in need. Services include food, clothing, financial help, advocacy and many other forms of assistance. Need friendly help? Call from 9 a.m. to 4 p.m., 475-3305.

Washtenaw County WIC Program provides nutritious foods, free coupons and health counseling for pregnant women, breastfeeding women, infants and children up to age five. Info., 971-1300.

Senior Nutrition Program meets Tuesdays and Thursdays at noon. Waterloo Township Hall. For reservations call 475-7439, 10 a.m.-1 p.m. Lunches, cards and fellowship.

Chelsea Together. For more info, call week days 475-4030, 8 a.m.-5 p.m., or 475-5935, 5 p.m.-9 p.m.

Parent to Parent Program in home, friendly, visiting support system for families with children. Call 475-3305.

PARISHO & COMPANY

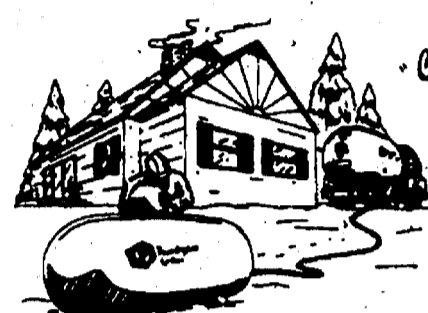
Professional Corporation
JAMES (JAY) W. PARISHO, C.P.A.
CERTIFIED PUBLIC ACCOUNTANT

Two locations to serve you:

1905 Pauline Boulevard, Suite 5 107 1/2 South Main, P.O. box 251
Ann Arbor, Michigan 48103-5001 Chelsea, Michigan 48118
313/995-5656 313/475-9640

WE SERVICE: Personal—Corporate—Partnership—Farms
ACCOUNTING—TAX PREPARATION & CONSULTING—FINANCIAL PLANNING
Appointments available Monday through Saturday

Dependable Propane Service...



...It's a Warm Feeling

Pennington GAS SERVICE

13400 M-52 • STOCKBRIDGE • (517) 851-7577 • (800) 274-5599

BEEF BARN DEER PROCESSING

"Cut & Wrapped the way you want it!"

9-6 Monday thru Saturday
Open Sundays
Bow 11-3 • Gun 10-4

Phone (517) 782-3000 • 3095 Cooper Rd., Jackson
1 mile North I-94

Family Problems, Job Stress, Depression, Marital Problems, Substance Abuse...

Our experienced staff has been providing comprehensive mental health services for over twenty years. We can help you meet today's challenges.



Mental Health Services for All Ages

J.C.A.H.O. Accredited
All Major Insurances Accepted

For your confidential appointment call:

955 W. Eisenhower Circle, or 2750 Carpenter Rd. • Ann Arbor (313) 662-6300

CHELSEA ANIMAL HOSPITAL

Complete veterinary care for small animals

Paula C. Rode, DVM
313-475-0615

1475 South Main
Chelsea, Michigan 48118

Mon., Wed. Fri. 8 a.m.-5 p.m.; Tues., Thurs. 8 a.m.-8 p.m. Sat. 8 a.m.-1 p.m.



A thousand little ways to show we care

A reassuring smile. A good ear. A kind voice. Caring has always been essential to curing, and that is especially true when it comes to our young patients. We care about children so we know how to care for them. At the University of Michigan Health Centers, we believe the only way to know your child and understand all of his or her health needs is to be in your neighborhood. It's the easiest way to help your child the most. Here's what else makes us ideal for your whole family:

- We have plenty of pediatricians, ob/gyns, family practice physicians and general internists and in your community.

- Many sites offer extended hours, including Saturdays.
- We have all the services you need to stay healthy. Many locations offer laboratory tests and X-rays, too.
- If you ever need a specialist, you're already linked with the U-M Medical Center and our hundreds of experts.
- Finding the right doctor close to your home is simple, and making an appointment is easy. Just call the number below and we will help you select a physician and even schedule your first appointment.

UNIVERSITY OF MICHIGAN

Health Centers

1-800-211-8181

Because world-class health care shouldn't be a world away.

Reasons to Choose
University of Michigan
Health Care

Insurance

For your convenience we accept most major insurance plans, including:

- M-CARE
- Blue Care Network
- Blue Cross / Blue Shield of Michigan
- Aetna Managed Care
- OmniCare (not available in Livingston County)
- Selectcare (available in Oct 1997)
- Medicaid
- Medicare
- And Others... Call to make sure your health plan is accepted

We're In Your
Neighborhood

Call 1-800-211-8181 for information about hours and providers.

Chelsea
Chelsea Family Practice
14700 E. Old US 12

Chelsea Internal Medicine
128 Van Buren

- Yun Ching Chen, M.D.
- David Vallance, M.D.
- Steven Yarows, M.D.

Internal Medicine Specialists
175 S. Main

- Diane Howlin, M.D.
- Sonja Krafek, M.D.
- Kym Orsetto, M.D.
- Rebecca Patras, M.D.

Dexter
Dexter Village Family Physicians
8005 Main

- Wendy S. Biggs, M.D.
- Michelle L. Munnell, M.D.
- Theresa R. Peters, M.D.
- Michael L. Szymanski, M.D.

Competition set for small businesses

Did your small business develop an innovative product or service during 1997?

If you enter it in the Small Business Innovation Awards competition, you could earn statewide recognition and a night's stay at Mackinac Island's Grand Hotel.

This year's competition will honor remarkable and unique products and services launched in 1997 by Michigan-based companies with fewer than 500 employees.

Now in its fourth year, the competition is sponsored by the Small Business Association of Michigan (SBAM), the Eli Broad College of Business at Michigan State University, The Detroit News, Old Kent Bank and MERRA (an Ann Arbor-based non profit organization that helps small firms secure financing for new technology development and commercialization).

Entry deadline is May 1. Forms are available at SBAM Web site (www.sbam.org) or by calling SBAM at (800)362-5462 or (517) 482-8788. There is no

entry fee and the competition is open to any small business with headquarters in Michigan.

Winning small businesses will be profiled in The Detroit News and in SBAM's Small Business Journal. The winners of the Small Business Product of the Year and the Small Business Service of the Year

will be recognized at SBAM's annual convention July 24 on Mackinac Island, and receive a free night's stay at the Grand Hotel.

SBAM is the largest statewide, state-based association of small businesses in the nation, with over 8,000 members located in every county in the state.

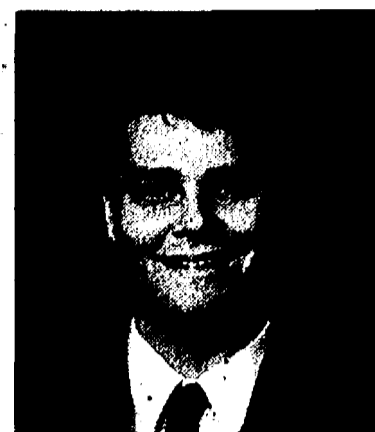
CHIROPRACTIC WELLNESS CENTER

Early Morning, Evening
& Saturday Hours
By Appointment

Welcoming New Patients

134 W. Middle
475-8555

Free consultation to see if
chiropractic is right for you.



DR. BRIAN SEBESKY

Looking for
interesting reading?
Check today's
classified section.

FREE
Skin Condition
or Color Analysis

Find out what your skin really needs.
You'll be surprised how much money
you could save on my skin products.
Isn't it time you did something
nice for yourself?

Call me for an appointment.

DEBORAH MOHL
Image Consultant
313 475-6629

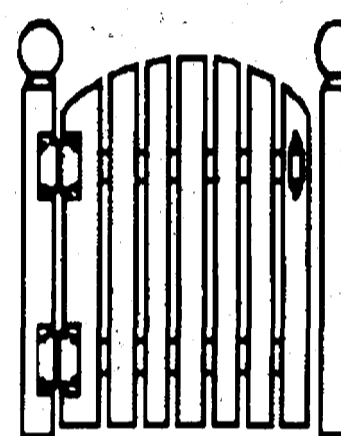
Request a Free Catalog

- Skin Care and Cosmetics
- Skin Condition Analysis
- Color Analysis
- Personal Image Profile
- Business Presentations



BEAUTICONTROL

GATEWAY
MORTGAGE GROUP, INC.



- Pre-Approvals
- Residential Home Loans
- Construction Loans
- Refinancing
- No-Cost Loans
- FHA/VA
- Self-Employed
- Evenings & Weekends

Adrian
517-265-3004

Chelsea
313-475-6788

—Bank Celebration—

As part of Chelsea State Bank's 100th anniversary celebration, a clown entertained children and Chelsea High School orchestra students performed for customers at the downtown branch Saturday, Dec. 20. Pictured with Colors the clown is Amanda Johnson, 3, of Chelsea. The quartet consists of musicians Katie Henry, Corinna Christman, Christine Tracy and Darrel Noye.



Local residents earn degrees

Students from around the area took the big plunge into the post-college world Dec. 14 as Eastern Michigan University held its Fall-term commencement ceremony. In all 1,070 undergraduate and 400 graduate-level students graduated from the college.

Chelsea graduates are Kyle Edward Erickson, bachelor of science; Linda Marie Loszewski, bachelor of science; Jennifer Ann Petty, magna cum laude bachelor of business administration; and Amy Lynn Wagoner, summa cum laude bachelor of science.

Dexter graduates are Andrea L. Bradbury, bachelor of science; Mindi Colby, bachelor of science; Amy Elizabeth Potter, cum laude bachelor of science; and Harley B. Rider, cum laude bachelor of science.

Grass Lake graduates are Brady Lewis Cook, bachelor of science; Joel Hugh Cook, bachelor of science; and Thadmon Patrick Murphy, bachelor of science.

Manchester graduates are Wendy Joy Haeussler, summa cum laude bachelor of science; Duane Gale Hopkins, bachelor of science; Linda Dianne Lamerre, bachelor of science; Catherine J. Roberts, magna cum laude bachelor of fine arts; and Shannon Lee Sawyer, bachelor of science.

Whitmore Lake graduates are Alison Mary Butler, bachelor of fine arts; Robert Terry Dillon, bachelor of science; Lynn Marie Fritz, bachelor of business administration; Peter

John Haggerty, bachelor of science; Jennifer Lynn Jackson, bachelor of science; Kelly Kay Kleman, bachelor of fine arts; Douglas Charles Lindsay, cum laude bachelor of science; Daniel Anthony Reason, bachelor of science; Mary Ellen Skrbina, summa cum laude bachelor of business administration; Steven Wayne Vowles, bachelor of science; and Alexis Wing, bachelor of science.

Michigan State University also announced degree candidates.

Chelsea candidates are Heather L. Robertson, with honors in medical technology; and Kevin Smith with honors in Mechanical Engineering.

The Dexter candidate is Ashlee Doreen Zylka in supply chain management.

The Gregory candidate is Sharon Marie Veltri in supply chain management.

WESTARBOR ANIMAL HOSPITAL

6011 Jackson Road, Ann Arbor, MI (1/2-mile east of Baker Rd.)
(313) 769-5391

Start the New Year Out Right For Your Pet

- Prevent Obesity

By Dr. Sharon V. Altrogge, D.V.M.

Obesity is becoming a common problem in both dogs and cats. If you cannot easily feel your pet's ribs, its waist is poorly discernable, and/or there is a sizeable abdominal fat pad, your animal is probably overweight. The main cause of obesity is the over-feeding of an inactive animal. In rare instances, it may be related to a hormonal imbalance such as hypothyroidism or Cushing's disease. Spaying or neutering does not significantly influence weight gain.

Obesity can be harmful to your pet. The heart must work harder to pump blood through the vascular system.

Also, anesthesia is more risky in an overweight dog or cat. Obesity reduces tolerance to hot weather and exercise, it contributes to a depressed, antisocial attitude, and it is a complicating factor in many illnesses such as diabetes, pancreatitis, and liver disease.

Changing your overweight pet's eating and exercise habits is the best thing you can do for its health. An examination by your veterinarian first will uncover any medical problems and allow a reasonable dietary plan to be implemented.

If you have any questions on pet care or health, please call (313) 769-5391



SALES, INSTALLATION, & SERVICE
Furnaces Boilers Air Conditioners

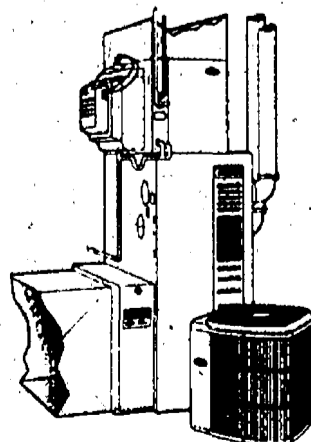
INDOOR WEATHER ALERT

The weather in Michigan is never dependable, but your weathering should be. If you fear a heating system failure, put your fears to rest and call Koch & White, your Indoor Weather Experts, for a free estimate on high-efficiency Carrier equipment.

Koch & White
Heating & Cooling

Carrier

CUSTOM MADE INDOOR WEATHER™



Carrier
DISTINGUISHED
LEADERSHIP
DEALER

2608 W. Liberty, Ann Arbor

663-0204

Morgan enlists in U.S. Army

Benny D. Morgan has joined the United States Army under the Delayed Entry Program at the U.S. Army Recruiting Station in Adrian.

The program gives young men or women the opportunity to delay enlistment into the Army for up to one year before reporting to basic military training.

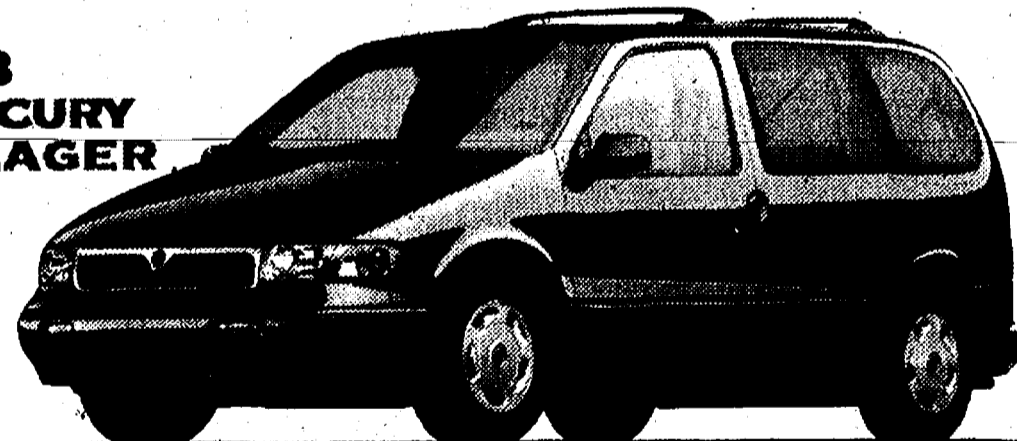
The enlistment gives the new soldier the option to learn a new skill, travel and become eligible to receive as much as \$40,000 toward a college education. After completion of basic training, soldiers receive advanced individual training in their career specialty.

Morgan, a 1997 graduate of Manchester High School, will report to Fort Knox, Radcliff, Ky., for basic training Jan. 9.

He is the son of Wanda and Bennie Morgan of Manchester.

Year-End Choices That Really Add Up.

1998
MERCURY
VILLAGER

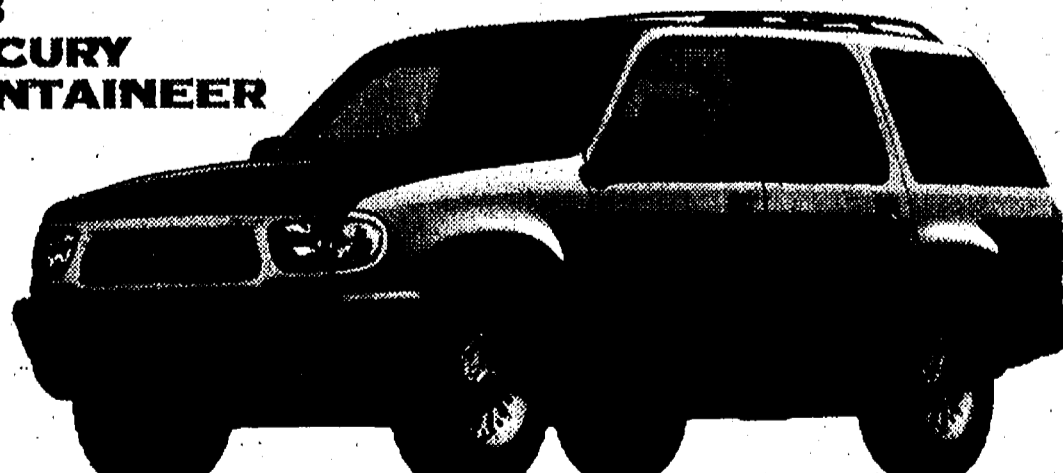


\$2,000
CASH BACK

OR 1% APR
FINANCING*

Standard Features • 30-liter SOHC V-6 engine • Second Generation dual air bags* Sequential multi-point electronic fuel injection • Front-wheel drive • Power front disc/rear drum brakes • Front stabilizer bar

1998
MERCURY
MOUNTAINEER



2.9% APR
FINANCING*

Standard Features • 40-liter SOHC V-6 engine • Power door locks, windows and mirrors • SecuriLock™ passive anti-theft system • 4-wheel disc anti-lock brakes Available Features • All-Wheel Drive (AWD) • 50-liter OHV V-8 engine



See Your Local Mercury Dealer.

Imagine yourself in a Mercury

*\$2,000 cash back or 1.0% Ford Credit APR financing for qualified buyers on '98 Villager. Dealer participation may affect savings. Residency restrictions apply. Take new retail delivery from dealer stock by 1/9/98. See dealer for details. *2.9% Ford Credit APR financing for qualified buyers on '98 Mountaineer. Dealer participation may affect savings. Residency restrictions apply. Take new retail delivery from dealer stock by 1/9/98. See dealer for details. *Always wear your safety belt and secure children in the rear seat.

Chelsea



—Playland Grand Opening—
McDonald's Restaurant recently opened its children's playground to the public with a ribbon cutting ceremony. While eager children ran through the structure, Jackie Maveal of Chelsea Area Responding to Teens cut the ribbon and received \$100 for the organization. Pictured are CART members Betsy Ruhlrig (left) Trevor Maveal and Jackie Maveal, and McDonald's manager Robb Collier and regional representative Jerry Olinik.

Local colleges honor resident

Local colleges have honored several Chelsea residents in recent weeks.

Hope College in Holland announced the winners of athletic letters. Molly Griebie, a junior at the college and a Chelsea High School graduate, lettered in women's cross country for the third consecutive year. Case McCalla, also a junior and a Chelsea grad, lettered a second time in football.

Kalamazoo College recognized Rebecca J. Flintoft, daughter of Carol and Peter Flintoft of Chelsea, with the Fan E. Sherwood Memorial Prize, given to outstanding orchestral string players. Flintoft was given the prize in front of parents, alumni and friends at the Kalamazoo College Honors Convocation Oct. 24.

Jeremy Bowers, a sophomore in computer science at Michigan State University, was accepted into the honors college. Bowers was admitted to the program based on a strong academic record, letters of recommendation from teachers and a written statement on why he wanted to be in the program. The honors college was founded in 1956 to meet the needs of academically gifted students.

Give a gift that lasts all year long!
A subscription to your local newspaper

Adopt-A-Pet

Animal Aid has rescued pets for adoption. Volunteers and foster homes are needed. For information call (810) 231-4497. See the Adopt-a-Pet web page at <http://members.tripod.com/sisaac/animalaid.htm>.

DOGS

1. "Bart" — Chow mix, male — must neuter, black, long hair, abandoned, very friendly.
- CHOW MIX PUPPIES — (4), black and white, 7 weeks, long hair.
3. "Tara" — Shepherd/Retriever mix, 74 lbs., used to small kids, cats and dogs, tan, female, must spay, housebroken, fenced yard, only 4 years.
4. "Ace" — German Short-haired Pointer, neutered male, white with black spots, 2 years, housebroken, older kids, short hair, vaccinated.

CATS

1. "Baby" — a gray and white, spayed female, short hair, vaccinated, frightened of dogs, used to a 6-year-old child.
2. "Tally" and "Hallie" — calicos, females — must spay, 9 months and 2 years, abandoned, vaccinated, short hair.
3. "Charcoal" — light gray tiger, male — must neuter, adult, abandoned, medium coat, very friendly.
4. "Jace" — black, neutered male, declawed, 1-2 years, medium coat, used to small kids, abandoned, very loving.
5. "Fortune" — Terrier and

Shepherd mix, abandoned, recovering from broken leg and eye injury, 2-3 years, neutered male, gold and cream, used to other dogs, vaccinated.

LATE ADDITIONS:

1. "Budman" — Beagle, male-must neuter, abandoned, adult, white stripe down face, tri-color.
2. "Milo" — orange cat, under 1 year, neutered male, medium coat, vaccinated, used to other pets.

Free Estimates

New and Repair

G.L. Milliken Plastering

Lath and Plaster
Veneer Plaster
Ornamental Plaster

Cement Plaster and Stucco
Exterior Synthetic Plasters
Spray and Hand Texturing

Residential and Commercial

Phone (313) 475-6284

Chelsea, MI 48118

DEXTER'S PUB

New Year's Eve Dinner specials

Fillet Mignon 12 oz. \$17.95

Fillet Mignon 6 oz. & King Crab legs \$18.95

Fillet Mignon 6 oz. & 3 Colossal Shrimp \$16.95

King Crab legs (1 lb.) \$22.95

King Crab legs & 3 Colossal Shrimp \$18.95

Colossal Shrimp (6 pc.) \$16.95

Combo Plate-Colossal Shrimp,
King Crab legs & Lake Perch \$19.95

Fresh Pan Fried Lake Perch \$16.95

Baked Walleye Fillet \$13.95

Porterhouse Steak 20 oz. \$16.95

ALL DINNERS INCLUDE CHOICE OF POTATO, VEGGIE, & SOUP OR SALAD

Serving Dinner 4 p.m.-9:30 p.m.

8114 Main St. • Dexter • 426-1234

Chelsea Pediatric Center

Pediatric and Adolescent Medicine

1515 South Main St. • Chelsea, MI 48118

(313) 475-9175

would like to wish everyone a very happy and healthy holiday season

We welcome new patients

Mary H. Westhoff, M.D.

Brian J. Kennedy, M.D.

Shelley K. Kim, M.D.

Most insurance plans accepted

Happy Holidays

Thank you to my Family, Customers, Clients, Friends and Colleagues for a very successful 1997.

I sincerely appreciate your loyalty and support. May you have a joyous and safe holiday.

Marcia Kipfmiller

RE/MAX Community Associates

CLASSIC PIZZA

8015 Huron St. • Dexter, MI 48130

426-1900

We accept VISA, Mastercard, and Discover

Hours- 11 a.m.-11 p.m. Everyday

Let Us Cater Your Party.

Party Subs Available

WE DELIVER*

*Orders over \$5.00

3-TOPPER

1-10" \$7⁹⁹

2nd for \$3⁹⁹

1-12" \$10⁹⁹

2nd for \$4⁹⁹

1-14" \$11⁹⁹

2nd for \$5⁹⁹

Not valid with other coupons or specials. exp. 1-31-98

FAMILY FAVORITE

2 pizzas w/2 items

1 bag bread sticks and 1 - 2 liter pop

10" \$13⁹⁹

12" \$16⁹⁹

14" \$19⁹⁹

Not valid with other coupons or specials. exp. 1-31-98

PARTY PARTY PARTY PARTY

Get 4 large 1 item pizzas

\$26.99

Additional items \$1.29 each

Not valid with other coupons or specials. exp. 1-31-98

Elaine's Gallery

OF FINE ART and FRAMING Inc

Have you had your eye on something special? Now's the time to buy!

10% OFF MOST ITEMS

25% OFF ALL FRAMED ART

up to 40% OFF ALL CHRISTMAS ITEMS

(excluding Christopher Radko)

SALE ENDS JAN. 24th

8063 Main St. • Dexter • 426-1581

ROBERTS GLASS

January Special

Federal Screw Works Employees...

Show proof of employment with Federal Screw Works and receive

Free Courtesy Rides

\$25⁰⁰

Off Deductible Any Glass Only Claim

475-5811

610 East Industrial Chelsea, MI

AUTHORIZED PPG DEALER

AEBIS WINDSHIELD REPAIR

POLICE BLOTTER

DEXTER VILLAGE-CHELSEA VILLAGE-SCIO TWP.-LYNDON TWP.-LIMA TWP.-FREEDOM TWP.-DEXTER TWP.-SYLVAN TWP.-WEBSTER TWP.

Chelsea Village

Missing Person

A 41-year-old Chelsea man reported his daughter missing from their residence in Village Apartments, 250 Wilkinson St. Chelsea Police located the 13-year-old girl at a trailer on N. Main Street. She left peacefully.

Suspicious Incident

A suspicious incident was reported at a downtown business, Dec. 15. A store owner told Chelsea Police a 23-year-old Hudson man was soliciting donations for the Students Against Drunk Driving chapter. He appeared suspicious because he was not from the high school.

However, upon further investigation police discovered the man works for the American Youth Corps Inc., which has a contract with the local SADD chapter that allows the company to solicit advertising on behalf of SADD. In turn, the company provides folders with SADD slogans and information to the school.

Larceny

Larceny was reported in the 200 block of Buchanan St., Dec. 17. A 40-year-old man told Chelsea Police that he suspects a 45-year-old Chelsea man of stealing two tires and four wheels stored in his garage. The theft occurred between Dec. 9 and Dec. 16, a couple weeks after the suspect expressed an interest in purchasing them from the victim.

The victim told police that the suspect's son, 25, told him he believed his father was guilty of the crime. The stolen property is valued at \$380.

Embezzlement

Embezzlement was reported at Pamida Discount Store, 1040 S. Main St., Dec. 22. The store manager told police that she caught a 16-year-old Munith girl, a cashier, allowing her friend to leave the store with merchandise she did not purchase. In a statement solicited by the store, the girl admitted to allowing her friend, a teen from Stockbridge, to pick out over \$500 in merchandise and take it. The suspect acted as if she rung up the transaction, however, she did not.

The suspect said in her statement that she knew it was wrong to do but her friend couldn't afford the items otherwise.

Ingham County Sheriff's Department retrieved the stolen merchandise from the girl in Stockbridge.

The case has been forwarded to the prosecutor's office.

Dexter Township

Domestic Assault

Domestic assault was reported on Westwind Drive near Fleming Road, Dec. 23. A 31-year-old woman told a Washtenaw County Sheriff's deputy that her husband, 26, assaulted her during an argument. The woman said her husband returned home after he had been drinking alcohol. She was wrapping presents and an argument ensued.

The woman said she tried to push her husband away and he put her in a head lock and forced her face in the kitchen sink. The woman said she scratched him and he let go. She left for her mother's home and when she returned he had changed the locks, so she called police.

The suspect denies touching his wife. He said they only had a verbal argument.

Scio Township

Felonious Assault

Additional suspect information has come forward in a felonious assault case reported in the 7300 block of Marshall Road, Oct. 13. A 23-year-old Chicago man threatened at gun point positively identified his assailant, a 29-year-old man.

A deputy faxed six photographs of possible suspects to the victim in Chicago. The victim called and positively identified one of the six as his attacker. A prosecutor is reviewing the case.

Stolen Vehicle

A 1995 Geo Prism was reported stolen from the Jim Bradley car dealership, 3500 Jackson Road, Dec. 19. A

saleswoman told a sheriff's deputy that she allowed a 29-year-old Ann Arbor man to test drive the car after making a photocopy of his driver's license. The man, however, did not return the vehicle, valued at \$9,850.

Police spoke with the suspect's father and later the suspect returned the vehicle. He admitted to being a drug addict and said he was high on Vicodin.

Police noted the suspect is being investigated for his involvement in similar thefts at other area dealerships.

Drunken Driving

A 52-year-old Scio Township man was arrested for operating a motor vehicle while

under the influence of liquor on Zeeb Road near I-94, Dec. 19. The man was initially stopped near Banfield's Bar for driving erratically in his 1988 Ford pick-up truck.

The driver's eyes were bloodshot and watery and his speech was slurred. He admitted to drinking alcohol from 2 p.m. to 6 p.m. at a restaurant. A test proved his blood-alcohol level to be .19 percent, which is more than the legal limit to drive.

Lyndon Township

Breaking and Entering

Breaking and entering was reported in the 8200 block of Beeman Road, Dec. 22. A 37-year-old woman told police

that someone broke into her home between 9 a.m. and 5 p.m. The woman said she arrived home to find the door open and the door jamb damaged. She also discovered over \$1,400 worth of property stolen, including a VCR, two jewelry boxes, jewelry and Christmas gifts.

Neighbor Trouble

Neighbor trouble was reported on Lingane Road near Waterloo Road, Dec. 18. A 36-year-old woman told police that her neighbor, a 45-year-old woman, has been inciting her dog to bark by blowing a whistle. She said the woman also has been leaving notes in her mailbox.

The suspect told police that

she blows the whistle to alert her neighbor when her neighbor's dog gets loose. She said she wrote one note asking the woman to keep her dog at home.

Lima Township

Found Property

A shirt belonging to the Washtenaw County Jail was found at Smith's Towing Service, 11453 Jackson Road, Dec. 20. A 20-year-old mechanic turned it into the sheriff's department after finding it in the company's parking lot.

(Compiled by Associate Editor Michelle Rogers based on reports filed with Chelsea Police and the Washtenaw County Sheriff's Department.)

MAKE YOUR MONEY COUNT YEAR ENDEAVOR

2.9% APR

BIG TIME Savings!

ON THESE VEHICLES OR UP TO \$2000 CASH BACK!

<p>\$1000 CASH BACK</p> <p>CAMARO</p> <p>*V-6 ONLY</p>	<p>\$750 CASH BACK</p> <p>LUMINA</p>	<p>\$2000 CASH BACK</p> <p>CAVALIER CONVERTIBLE</p>
<p>\$750 CASH BACK</p> <p>MONTE CARLO</p>	<p>\$2000 CASH BACK</p> <p>S-10</p> <p>*4 CYLINDER ONLY</p>	<p>\$2000 CASH BACK</p> <p>TRACKER</p>
<p>\$1500 CASH BACK</p> <p>ASTRO</p>	<p>\$1000 CASH BACK</p> <p>BLAZER</p>	<p>2.9%</p> <p>VENTURE</p>
<p>\$1000 CASH BACK</p> <p>FULL-SIZE CONVERSION VAN</p>		

\$2000 cash back on '98 Cavalier convertible. As an alternative to cash-back offers, GMAC*-approved 2.9%/48-month or 3.9%/60-month APR financing available on selected vehicles. All Cavalier Models \$750 Cash Back, excluding Cavalier Convertible. Offer ends January 5, 1998. For complete details, see your participating Chevrolet® dealer.

Visit Your
Great 8

Chevy
Dealers
Today!

ANN ARBOR
Rampy Chevrolet
3515 Jackson Road
313/663.3321

CHELSEA
Faist-Morrow Chevrolet
1500 South Main St.
313/475.8664

CLINTON
Underwood Chevrolet
1070 West US 12
517/456.4181

DEXTER
Frank Grohs Chevrolet
7120 Dexter - Ann Arbor Rd.
313/426.4677

HOWELL
Champion Chevrolet
5000 E. Grand River
517/545.8800

MANCHESTER
Tirb Chevrolet
131 Adrian Street
313/428.8492

SALINE
Bill Crispin Chevrolet
7112 E. Michigan Ave.
313/429.9481

YPSILANTI
University Chevrolet
1180 E. Michigan Ave.
313/481.0210

Kopinski graduates

Keith L. Kopinski of Dexter was among 22 Michigan-area students who graduated from Adrian College Dec. 12.

Kopinski received a bachelor of arts degree, magna cum laude. He is a 1993 Dexter High School graduate and son of Jan and Daniel Kopinski of Dexter.

Dr. George Somers, professor of sociology, criminal justice and human services at Adrian College, presented the commencement address. A reception for family and friends followed the ceremony.

GET MORE
NOT PAY MORE
Shop Chevy

MAKE YOUR HOUSE A HOME!

CHIMNEY CLEANERS BY:

CLEAN SWEEPS OF MICHIGAN
Chimney Cleaning & Repair
1-800-428-3741
Licensed & Certified

AIR DUCT CLEANING BY:

If there is dust in your ducts, there is dust in your lungs.

\$20 off
with this coupon

AIR-DUCT CLEANERS OF MICHIGAN
1-800-428-3741
Certified by the National Air Duct Cleaners Association • Michigan License #71-00288

GUTTERS BY:

MANCHESTER SEAMLESS GUTTER SIDING
For your year-round gutter repair & replacement.
Bill Walkow - owner
Over 15 Years Experience • Free Estimates
(313) 428-8881

ROOFING BY:

MR. ROOF
Your neighborhood's largest residential roofer for over 30 years.
313-429-9311 or 313-668-4970

WINDOWS BY:

Let Active One Construction make your dreams come true!

- Sliding/Trim
- Gutters
- Garage Doors
- Roofing
- Patio Enclosures
- Sun Rooms
- Windows
- Reconstruction
- Copper Roofs

Call for your personalized showing
(313) 944-1444
Construction **Active One** Company
Licensed #21 02092103 Owned by local Sallie residents

REMODELING BY:

Gary Koch Construction Co.
• Remodeling
• Concrete
• Pole Barns & Garages
Licensed • Insured
313-426-0660

PROPANE GAS BY:

Pennington GAS SERVICE
"Count on us to keep the heat on."
Ask about our price protection plan.
1-800-274-5599
18400 M-52 • Stockbridge

KITCHEN CABINETS BY:

CABINET SOURCE
KITCHEN AND BATH STUDIO
3929 Jackson Rd. in the Jackson Centre Plaza
(313) 996-0688
M-F 9-5, Sat. 10-2

HEATING & COOLING BY:

Tom Steele & Son Heating & Cooling
"A family business for over 50 years!"
• New Homes • Replacements • Conversions
• Free Estimates
Armstrong • Bard • Fraser-Johnston
14420 Forest Ct. Ph: (313) 475-1222
Chelsea, MI 48118 Fax: (313) 475-8145

WATER SOFTENER BY:

U.S. FILTER
Taking Care of the World's Water... and Yours!
For all your residential water treatment needs, including:
• Drinking Water Systems • Free Water Analysis
• Salt & Bored Water Systems • Cooler Rental & Sales
• Commercial/Industrial Water Treatment • Softeners
3735 Plaza Drive Ann Arbor
800.327.0665
313.662.5665
\$10 installation*
*basic installation

ENTRY DOORS BY:

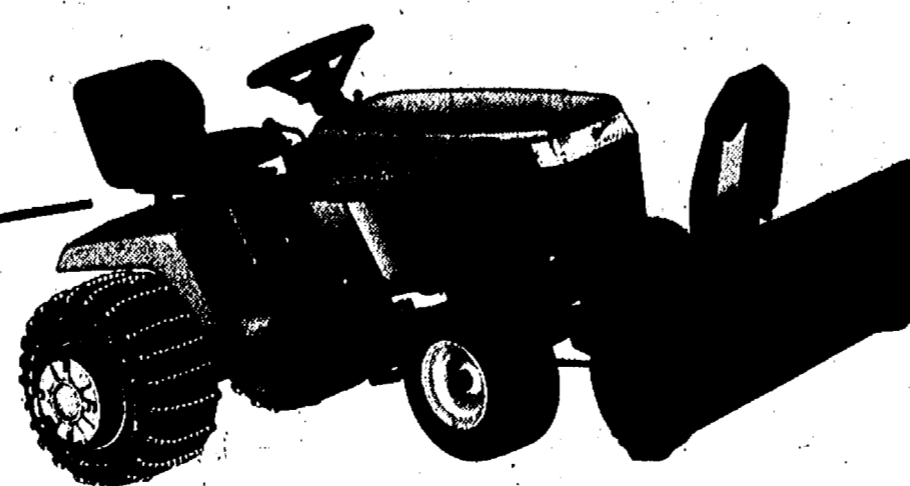
GEORGE MEYER COMPANY SINCE 1954
Your area's entry door & replacement window specialist since 1954.
WINDOWS: Pella wood, Owens Corning Fiberglass & Vinyl.
DOORS: Steel & Fiberglass.
Other products include Siding, roofing, door/walls, storm windows & doors.
For your FREE ESTIMATE, Visit Our Large Showroom at:
3498 Pontiac Trail Ann Arbor, MI 48105
or call **(313) 769-7330**

FLOORING BY:

D&D CARPETS, INC.
"Sales with quality Installation"
• Free estimates
• Phone consultation & samples brought to your door!
or visit our Complete showroom
Furniture Flooring • Barbers • Plushes
Commercial Carpets
429-7060 778 W. Michigan Ave., Sallie

YARD EQUIPMENT BY:

Dubie Equipment Incorporated
4385 Parker Rd. • Ann Arbor
994-1313
PARTS SALES SERVICE
WOODS Woods Equipment Company
ACCO ALLIS Outdoor Power Equipment



SUNROOMS AND SOLARIUMS BY:

Anderson AW Free Estimates
Construction Company, Inc.
1-800-946-9555

The Chelsea Standard

Page 11

Chelsea, Michigan, Wednesday, December 31, 1997

Pages 11-20

Chelsea's 1997 year-end review

January...

2—Talk of a district-wide fire department serving the Dexter and Chelsea area may be heating up but Chelsea Fire Chief Dan Ellenwood predicts it won't become a reality for another couple years. He said it will likely take two years before the governments of the municipalities reach an agreement. Talk of the joint fire effort between Dexter Area and Chelsea Fire Departments has been intensifying since late last summer.

2—Stand for Children, an interfaith service, will be held Sunday, Jan. 19 at St. Mary's Catholic Church on Old US-12. The service will honor the memory of Dr. Martin Luther King, Jr. The service will include readings from Hebrew Scriptures, the Bible and the Qur'an.

2—Cable channel 22 offers television viewers a wealth of information about the community, from local events and restaurant reviews to birthdays, school closings and advice for the lovelorn. The channel has been operating since 1990 under the direction of Alex Weddon, the local channel's founder and operator.

9—Chelsea United Way has reached its 1996-97 fundraising goal of \$107,740.

9—Not many people would feel comfortable riding in a car driven by a robot. However, because of new technology developed at the Chrysler Proving Grounds in Chelsea, many car owners will have a more comfortable ride because of the many miles robots are driving Chrysler vehicles.

9—The Lima Township Board of Trustees will hold a special meeting Monday, Jan. 13, at which they are scheduled to appoint a new treasurer for the township.

16—Harold Allen, a longtime Chelsea resident, held a special work session with members of the Chelsea Village Council and the Chelsea Planning Commission Thursday, Jan. 9, to discuss a proposal for a 380-acre parcel of land he owns between Cavanaugh Lake and Sibley Roads. Allen said he wanted to get feedback and opinions from some local and government officials about his plan before proceeding with any formal requests. Allen's plans for the site include a 30-acre mobile home

park, 86 acres for a combination of apartments and condominiums and a 130-acre recreational park area.

16—Whether carpet is a safe choice for flooring in Chelsea's school buildings, or whether installing carpet would be a reckless and unhealthy choice all depends on whose research you choose to believe.

16—McKune Memorial Library officially became a district library on Monday, Jan. 6. The participating municipalities are the Village of Chelsea, Sylvan Township, and the portion of Dexter Township not served by the Dexter District Library.

16—Tentative staff assignments for the Chelsea School District elementary buildings have been made. Lucy Stieber will be the principal at Pierce Lake Elementary School, Sharon Whitmore will remain at North Creek Elementary School and a third principal, yet to be hired, will take the reigns at South Meadows Elementary School.

16—Results of the Michigan Educational Assessment Program test administered to fourth- and seventh-grade students this fall and the re-testing for the High School Proficiency Test given to seniors were recently released to the district.

23—The Chelsea Village Council voted 4-2 at its Jan. 14 meeting not to send to the Chelsea Planning Commission a request for annexation into the village for a 156.8-acre parcel between Cavanaugh Lake and Sibley Roads in Sylvan Township. Omnipotent Properties Inc. put forth the request, and Operations Manager Harold Allen had said he wants to put in some apartments and condominiums, a mobile home park and a recreational park on the land.

23—Although the Chelsea Village Council has not yet appointed a Historic District Commission to oversee the Chelsea Historic Preservation District, it looks as if they soon will be ready to do so.

23—The case for using the Clock Tower building as a site for a new village office complex was made Sunday afternoon at the First Congregational Church at a meeting sponsored by the Preservation Chelsea organization.

23—The Lima Township



Members of Chelsea's Center for the Development of the Arts painted a mural opposite the Chelsea Depot.

Board of Trustees voted at its Jan. 9 meeting not to negotiate an agreement with Ernest Bateson on the necessary pre-submission requirements and post-permit conditions for a quarry permit for land he owns on Scio Church Road.

30—Teachers who have been in the Chelsea School District for many years, but are ready to move on to other interests in their lives, will now have a new option to help them to do so. The Chelsea Board of Education voted unanimously at its Jan. 27 meeting to offer a voluntary early retirement program to its employees over the course of the next two months.

30—Chelsea Alternative High School announced the first ever graduates of the newly formed school, Michael Auquier, Stephen Cubberly and Shelly Kruger graduated in a dinner ceremony Jan. 15 at the Chelsea Community Hospital dining room.

February...

6—A request by Omnipotent Properties Inc. to the Village of Chelsea to annex 143.8 acres of Cavanaugh Lake and Sibley Roads in Sylvan Township will now go to the Chelsea Planning Commission for a study and report. The Chelsea Village Council voted 5-1 at its Jan. 28 meeting to send the annexation request on the its next phase in processing.

6—Where to relocate the village offices has been a hot topic in the community for quite some time, and the village still seems far from a consensus. The controversy over the relocation of the offices surfaced again at the Jan. 28 meeting of Chelsea Village Council. It was not on the agenda to discuss the matter of municipal office relocation at that meeting, but Trustee Robert Clark brought up the issue during the time designated for unfinished business. Clark made a motion to eliminate consideration of the Clock Tower building as a new site for village offices, which resulted in a 3-3-1 vote by the council.

6—After a great deal of wrangling over motions made, motions withdrawn and motions denied, the Lima Township Board of Trustees managed to make a few solid decisions at its Feb. 3 meeting.

6—The Village of Chelsea has once again opted to join the Washtenaw Development Council, an organization with a mission of supporting economic development that attracts and retains jobs within the county.

13—In the June 9 school board elections, voters will likely be asked to approve a one-mill sinking fund that would replace the one enhancement mill the district will be losing at the end of the year. But Chelsea School District Superintendent Ed Richardson assured that by approving the mill taxpayers will not experience any increase in what they are paying. If this sinking fund mill is approved,

taxpayers will be paying the exact same number of mills they currently pay.

13—What do you do when you have a group of people with completely different interests and conflicting ideas, but a common problem that needs a solution? Residents of Gene Drive in the village can relate to this scenario, and have been working to reach a compromise that everyone can live with. The condition of the private, little dirt road off of Old US-12 in the village has been a sore spot amongst the people who live there for some time, because they all have very different goals regarding their properties located on it.

13—An arrangement between the Chelsea and Dexter Fire Departments and the Multi-Lakes Sewer Authority has proven to be beneficial for both parties, and consequently, the rest of the community.

20—The Chelsea Village Council rezoned 131.7 acres of property on the east side of the village, along Freer Road in Lima Township, from agriculture designations (A-1 and AG-1) to low-density residential (RS-1) at its Feb. 11 meeting. This new zoning, which passed in a 5-0-1 vote by the council, allows up to four housing units per acre.

20—Raising the revenues for different departments within the village by raising their associated costs for new developers and residents, was a theme of the Feb. 11 meeting of the Chelsea Village Council.

20—The car pool parking lot at the south end of the village, by M-52 near the I-94 ramp, will be a bit safer now. There will soon be a light installed in the lot, and the village council has agreed to foot the estimated \$10-\$20 per

month energy bill.

27—The Chelsea Board of Education adopted a policy for assigning students to the district's buildings at its Feb. 24 meeting. Within the next few years, only the elementary buildings will be affected by this policy, but it is written in such a way that it could be applicable to any building or program.

27—The Chelsea School District is one step closer to implementing the technology plan adopted by the Board of Education in October. The board gave a unanimous nod to the recommendations of Childs Consulting Associates to accept bids for four different categories of the technology bid package.

27—Recent travelers of Freer Road have probably noticed the passageway resembles a lake more than a road in some spots, particularly near the construction site of the new high school. However, according to Assistant Village Manager Bruce Pindzia, the contractors and the village are working on a permanent solution to the problem.

27—Dexter Township Board of Trustees postponed action last Tuesday on a fire service billing agreement with Huron Valley Ambulance. HVA has offered on behalf of the township to bill citizens for fire protection and medical first-responder services which is allowable under law.

March...

6—Fireworks exploded at the Feb. 25 meeting of the Chelsea Village Council, when the issue of relocation of the village offices was once again brought to the forefront. Village Trustee Robert Clark made his last meeting on the council a memorable one, by

lashing out in a personal attack of James Myles, the individual who is looking to take over Clark's seat at the next meeting of the council.

6—The Chelsea District Library Board passed two measures at its Feb. 25 meeting that prohibit residents of Lima and Lyndon Townships from having borrowing privileges from the library.

6—A company seeking to annex into Chelsea Village approximately 143 acres of Sylvan Township farmland to be used for a development containing condominiums, mobile homes, and a recreation park, has filed for chapter 11 bankruptcy. Omnipotent Properties Inc., whose only listed officer is Cory Tremper of Chelsea, filed for bankruptcy Feb. 20. Letters dated Feb. 25 were sent to unsecured creditors by the U.S. Department of Justice.

6—The Village of Chelsea now has an up-to-date historic district ordinance. After a heated public hearing, the village council adopted the ordinance in a 4-3 vote at its Feb. 25 meeting.

13—An architectural and engineering firm estimates that it will cost about \$2.6 million to renovate the Clock Tower building for use as a new village office complex. That figure, which translates \$76.77 per square foot, was estimated by Thompson and Phelen Inc. It was included in a report scheduled to be considered by village council at Tuesday night's meeting.

13—The Pierce Lake Elementary building is one step closer to opening its doors in the fall of 1997. The building now officially has a staff assigned to it. Staffing assignments for all three buildings were finalized March 5.

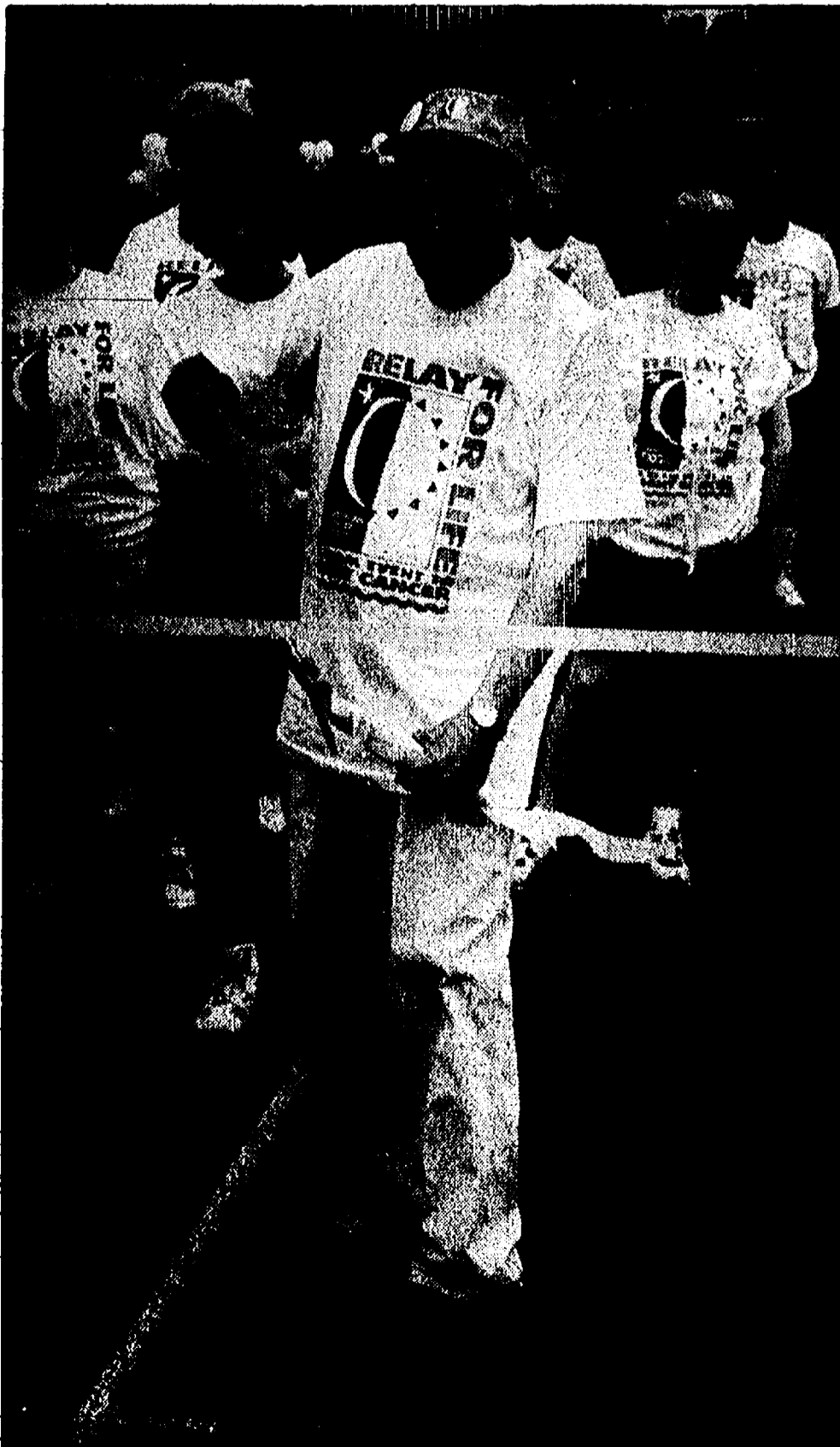
13—Chelsea resident Harold Allen says his proposed development for the west side of Chelsea is still on despite the fact that his company, Omnipotent Properties Inc., has filed for chapter 11 bankruptcy protection.

20—Village of Chelsea residents will feel the sting of inflation when they get their April water bills. The village council voted 7-0 at its March 11 meeting to increase water rates 15 percent, starting next month.

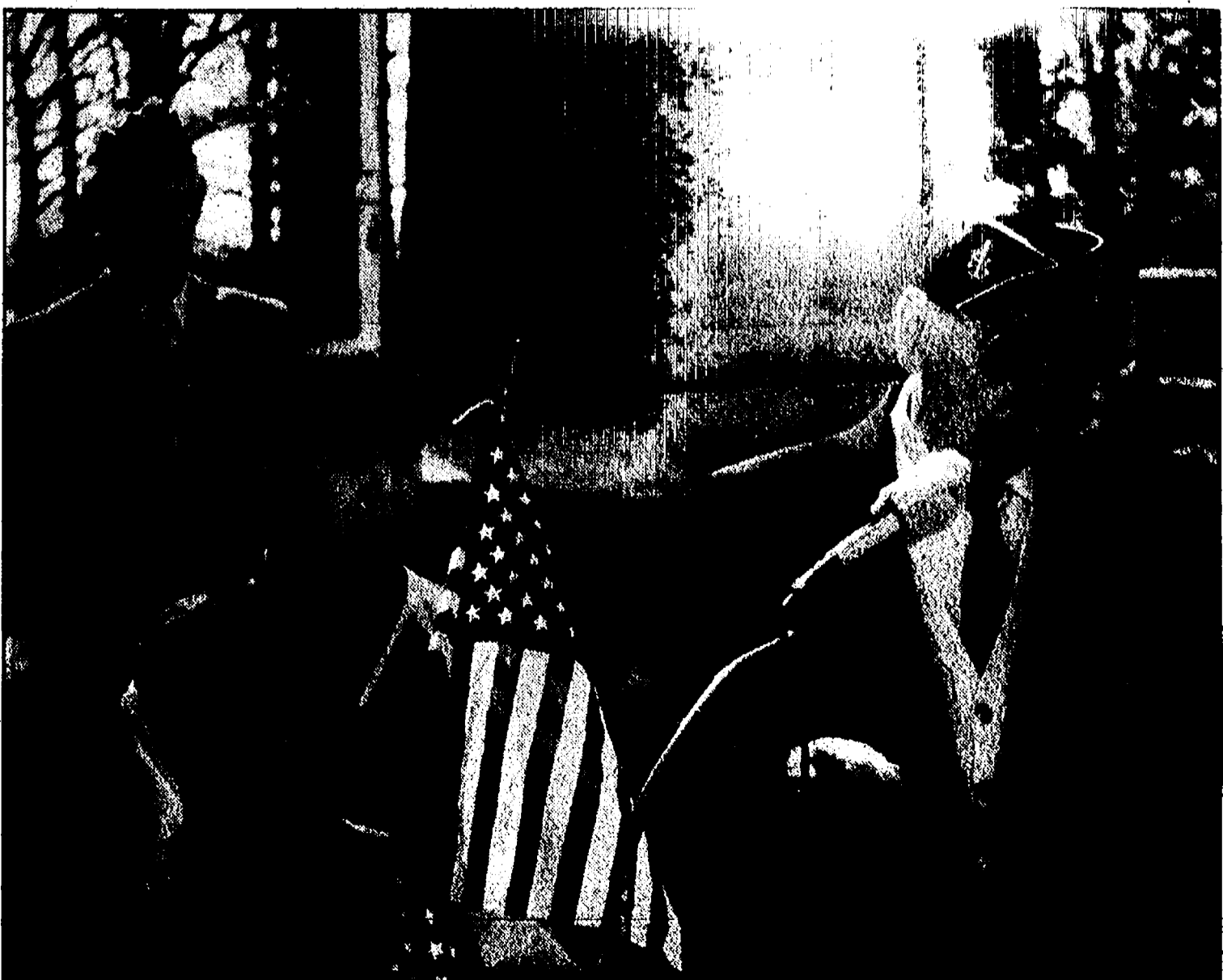
20—Many Chelsea-area residents, like more than 300,000 people from around the state, found themselves in the dark after last Thursday night's ice storm. Chelsea's electric department estimates that 60 percent of the people in the village, or about 870 households, lost power, along with numerous others in the surrounding townships and outlying areas.

20—A request to rezone 9.69 acres on Dexter-Ann Ar-

(Continued on Page 13)



Bill Vermelyen cut the ribbon for the second annual Relay for Life. The event is held to raise money for cancer research.



Bill Vermelyen, right, was the featured speaker at Chelsea's Memorial Day program.

SPORTS

Lets Go
Bulldogs!



Chelsea volleyball hosts tourney Saturday

By Phil Lozen
Sports Writer

After losing to Trenton in the semifinals of the South Lyon tournament, Chelsea gets a chance to advance even farther when it hosts the Chelsea

Invite Saturday morning.

Among the teams attending will be Chelsea, Pioneer, Milan, Lakeland, Ypsilanti, Huron, and South Lyon.

Pioneer already has won a tournament this season and

features on of the strongest outside hitters in the area Sarah Kuchinski.

Ypsilanti and Huron both showcase new coaches and should be much improved, Huron already playing Saline

and in the Okemos tournament.

Lakeland and Milan should provide tough opposition for other teams in pool play.

Things get underway at 8 a.m. Saturday at Chelsea High.

Eighth graders end cage season

By Phil Lozen
Sports Writer

Chelsea's eighth grade basketball team ended the year with an 8-2 record, winning its final eight games after losing twice to Pinckney to open the season.

After losing 36-32 and 34-32

to the Pirates, Chelsea beat Saline, Dexter, Milan, Tecumseh, Lincoln, and Saline, Dexter and Milan again.

Members of coach Todd Blomquist's team include: Kyle Brown, Jake Freeman, Jimmy Baker, Paul Newhouse, James Ballas, Bryan Hayes,

Joe Myers, Mike Herter, Jason Risner, Joel Lawrence, Joel Rosentreter, Evan Wildey, Matt Cunningham, Ty Christensen, Jeff Deikis, Tony Bowen, Mike Groesser and Chris Dotson. Scott Dettling and David Deis were the team managers.

REMEMBER

TO CALL
US
WITH
YOUR

Classified Ad
475-1371

ICE SHANTY
CUSTOM ORDER YOURS TODAY!

FOX TENT & AWNING CO.
WE RENT TENTS FOR ALL EVENTS

617 S. Ashley • Ann Arbor (313) 665-9126

THE CRAFT CLINIC
of Chiropractic

"EXPERIENCED QUALITY CARE YOU CAN FEEL COMFORTABLE WITH"

- CONVENIENT HOURS MON.-WED.: FRI.-SAT.
- 24 HOUR EMERGENCY SERVICE
- MOST INSURANCES ACCEPTED

MARK G. CRAFT, D.C.
Never a Fee for Consultation - Call Now
(313) 428-1370 • 122 W. MAIN ST., MANCHESTER
Entrance off Washington, Across from Library

BOWLING			
ROLLING PIN			
Kookie Kutters	W	L	Scat
Pots	46.5	21.5	2 W's
Mashers	40	28	Lai It On
Happy Cooker	35	33	Chelsea Lanes
Towels	34	34	4 W's-2
High Game: Janice Edick, 199	33	35	BBC's
High Series: Janice Edick, 498			The Hiebers
			Blueberry Bouncers
			J & L
			College Kids
			Double Trouble
			High Game: Jeannie Hohner, 169; Marv Frinkle, 226
			High Series: Jeannie Hohner, 484; Marv Frinkle, 559
KAHUNA MIXED			
T.N.T.	W	L	
CEPECO	45	18	
Wood Butchers	41	22	
	35	28	

ALL YOU CAN EAT FISH AND CHICKEN

Fridays, from 5:00 - 9:00 p.m.
(other dinner choices available)

~ Open Daily For Lunch ~
Sunday Breakfast starting at 8:00 a.m.
Plan your holiday luncheon or party at

Reddeman Farms Restaurant

475-4655 or 475-3020 • 555 S. Dancer Rd., Chelsea

GIVE A GIFT THAT LASTS ALL YEAR LONG!

A SUBSCRIPTION TO YOUR LOCAL NEWSPAPER

American Heart Association
Fighting Heart Disease and Stroke

DON'T GIVE MONEY TO STRANGERS

Trust your heart: The American Heart Association. Other organizations may copy us, but they can't hold a candle to our heart and torch. To learn more, call 1-800-AHA-USA1.

This space provided as a public service. ©1995, American Heart Association.

VISIT US AT OUR BEAUTIFUL NEW SHOWROOM

I will be pleased to show you the best buys in cabinets from:

Merillat
AMERICA'S CABINETMAKER®

We have 13 brand new kitchens and 8 baths fully displayed.

KITCHEN SUPPLIES, INC.
KSI
KITCHEN & BATH SHOWROOM®

3165 Oak Valley Dr.
Village Center • S. of I-94
(Enter off Ann Arbor-Saline Rd.)

B. J. HOHNKE
KSI Kitchen & Bath Specialist
(313) 769-7669

Everyday Low Prices on...

RCA • ZENITH
TVs and VCRs • New & Used

We service all brands.
Hoover Vacuum Cleaners
We carry and service Nutone Products, Central Vac, Intercom systems and many others.

• Winegard & Channel Master Antennas
• Satellite Systems: Sales • Service • Repairs

LOY'S TV CENTER
512 N. Maple Rd., Ann Arbor
(313) 769-0198

Support your local businesses

ON THE HOUSE
by
Carol Navarre

TAXPAYER RELIEF ACT OF 1997

One of the highlights of the new tax law is a significant capital gains tax cut which allows American taxpayers to unlock equities and end the spiraling cycle of "investing up." First-time buyers will also see expanded rules for Individual Retirement Accounts (IRA) and 401K plans, allowing penalty-free withdrawals to purchase a home.

Every two years, married sellers of principal residences who file joint federal income tax returns will be allowed a \$500,000 exclusion (\$250,000 for singles) from capital gains tax and those who must pay will do so at a tax rate of 20 percent compared to the previous 28 percent. Depreciation recapture will be 25 percent for sales or exchanges and after the year 2000, some properties held for five years or more will qualify for an 18 percent capital gains rate. That's not all-there will be a gradual increase in the estate tax exemption from \$600,000 to \$1 million, and to \$1.3 million for qualifying small businesses and family farms. This applies to all sales or exchanges occurring after May 6, 1997.

Homeowners can now consider several new options. Many people find themselves at an empty-nester stage (no children at home) in a four or five bedroom home with a large equity. For many of these people, their home has been their major investment and this new law will allow them to unlock the equity. They may help their children buy a first home, purchase that vacation dream-home or make other investments for retirement.

Consult your tax advisor for your particular circumstance.
For solid advice on buying or selling real estate, consult Carol at Real Estate One - Dexter. Please call her at 426-1487 or visit her office at 3173 Baker Rd.



CALL FOR A SUBSCRIPTION 475-1371

Schultz Bottled Gas and Appliance

DON'T FORGET TO GET YOUR PROPANE TANKS FILLED HERE!

Residential • Commercial • Retail

Prompt Service

We own and operate our own-bulk plant.
Family-owned and serving the area since 1939.

(313) 439-1503 • (800) 882-5546
(U.S.-23) to Milan, 1115 Dexter St.
Mon.-Fri. 8:30-5:30; Sat. 8:30-Noon

Wausau Homes

Upgrades & Options at 50% OFF!

This Voucher is yours!

Save big on all the upgrades you want when you purchase your new Wausau Home from me. See the floor plans and realize the savings right now!

See me for all the details and your free voucher worth up to \$2,500!*

*Limited time offer. Specific dates apply. Savings depend upon options chosen. This offer applies to most models and varies by specific series of Wausau Homes.

Riemco Homes
115 South St. • Chelsea
313-475-8294

Your Local, Independent Builder of Wausau Homes

Congratulations
to
George Palmer
of
Palmer Ford-Mercury

as he heads into retirement from the staff of

The Chelsea Standard
and
THE DEXTER LEADER

"You've meant a lot to our community"

—Chelsea's 1997 year-end review highlights year's events—

(Continued from Page 11)

hor Road by a developer associated with Chelsea Community Hospital has sparked a heated debate among Dexter officials, residents and business owners.

27—A bypass to the west of town will be in the future of the Chelsea area if local government officials decide to take the advice of the consulting team of Beckett and Raeder Inc. At a public meeting March 20, John Iacangelo of Beckett and Raeder presented the recommendation that at some point, a bypass to the west of Chelsea be built in order to alleviate the traffic flow on M-52 downtown.

27—A group of citizens from Lyndon Township met at McKune Memorial Library March 17 to discuss their concerns about continuation of library services for the township's residents.

27—Students and staff from Chelsea Alternative High School reported to the Chelsea Board of Education that the program has been successful and has reached its goal of decreasing the number of dropouts from Chelsea School District.

April...

3—Some mixed feelings surfaced Tuesday night, March 25, as the village council took public input on the issue of using the Clock Tower building as a new site for village municipal offices. A few residents questioned the validity of the report that recommends the Clock Tower to house the village offices. But for the most part, the residents quietly supported the report's conclusion.

3—In a recent Chelsea visit, 8th District U.S. Rep. Debbie Stabenow stressed that to build a better future, in Chelsea and throughout the world, the quality of children's education must be maximized. In promotion of her new education initiatives, the congresswoman visited the Chrysler Proving Grounds on March 26 to talk with engineers about promoting math and science in education, before heading to South Meadows Elementary School, to encourage the children to read.

3—People who want to build, develop, or make changes in Chelsea will now have to shell out a bit more money to get their projects off the ground. Chelsea Village Council voted unanimously March 25 to approve a new fee schedule that is more in line with what it costs the village to process the requests.

10—The Chelsea Planning

Commission has been moving forward with the request by Omnipotent Properties Inc. for the annexation of 143 acres on Cavanaugh Lake Road. The commission has completed a rough draft report on the property, and members are in the process of revising and adding to that report. Meanwhile, members of Sylvan Township government said they will stand firm on their position that some of the land, which lies to the west of the line they feel should be the boundary of the village, should not be included in the annexation.

10—Residents of Gene Drive may be a bit closer to finding an acceptable solution to the problem of how to improve their road in a fair and feasible way. Joseph Ohren, a facilitator from the Institute for Community and Regional Development, recently reported his findings and recommendations on the dilemma, based on several months of studying the needs and desires of residents and village officials.

10—The Tech. Unlimited Express, which took first place in last August's Chelsea Community Fair Parade, was named Grand Champion in a National Float Building Contest hosted by the Anderson Party Decorating Supplies Company.

10—It appears things have turned around for an Ann Arbor developer who wants to build a medical clinic in Dexter for Chelsea Community Hospital. MAVDevelopment returned to the planning commission Monday after revising a previous request that was denied without prejudice because it created spot zoning.

17—Lisa Nickel, a North Creek Elementary teacher, will be the new principal of South Meadows Elementary School this fall. She has been hired to fill the vacancy that will be left by Principal Lucy Stieber at South Meadows when Stieber moves over to the Pierce Lake Elementary building for the 1997-98 school year.

17—An ongoing oil slick problem on Letts Creek worsened over the weekend, to the point that authorities were able to trace the source, which they believe is Federal Screw Works, a downtown Chelsea industry.

17—Washtenaw County Road Commission held a public hearing in Sylvan Township Hall Monday night to determine the necessity of abandoning portions of Lowrey,

Ridge, Glazier and Highland Roads in Sylvan Township. Cavanaugh Lake frontage road abandonment and the rebuilding of a new county road through the middle of Dr. Irving Feller's property would affect approximately 30 residents.

17—Persistence and public pressure paid off Monday as MAVDevelopment was granted a request for rezoning that will ultimately allow a medical clinic across from Mill Creek Middle School in Dexter. Dexter Village Council approved the request, with Village President Phil Arbour voting against it.

24—The annual Chelsea Christmas in April celebration will be taking place this Saturday, April 26, at various sites throughout the Chelsea community. Volunteers will work on repairing seven local homes, doing everything from cutting down trees and cleaning out rain gutters to installing fence posts and hauling away debris.

24—Although the Chelsea Planning Commission seemed

positive about their recommendation on the request by Omnipotent Properties Inc. for the annexation of 156.8 acres on Cavanaugh Lake Road, operations manager Harold Allen said he's fed up with the project, and he has been discussing selling the portion of the land zoned for mobile home use to developer Steve Tracy.

24—Justin Strong, a senior at Chelsea High School, has received an appointment to the United States Air Force Academy in Colorado Springs, Colo. He will start his training at the academy this summer and will participate in military training and athletics, as well as conventional academic classroom instruction.

24—After much wrangling, Dexter Township Board of Trustees last week narrowly adopted a resolution supporting Portage Yacht Club owner Tom Ehman in his year-long quest for a dance and entertainment permit. The permit is necessary, according to state law, if entertainment or dancing is to go on legally at the

club. It's also necessary for Ehman to have if he is to get a club license.

May...

1—Chelsea Board of Educa-

tion regretfully accepted the resignation of Assistant Superintendent Christine Annesse at its April 28 meeting.

(Continued on Page 14)

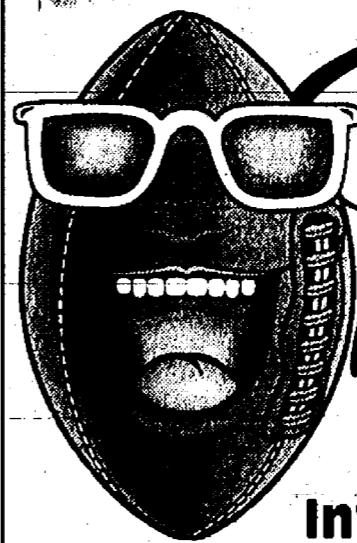
No matter

Who you are . . . someone
does care



CALL: 475-0111

SHOW YOUR TEAM SPIRIT!



Join our
Rosebowl Bash
on our 8 ft screen with
surround sound

Receive 1/2 Off dinner with
purchase of dinner of equal
or lesser value with this ad
----- expires 2/1/98 -----

Inverness Inn

13996 N. Territorial • Gregory, MI
Under New Management

Come enjoy spirits, lunch and dinner 7 days a week.

ski-doo. Snowmobiles

Take Advantage of Our Year-End Sale!

Large supply of clothing at
Mid-Michigan's #1 Ski-Doo Dealer

Hansen's Sports Center, Inc.

Open 10-9 Mon.-Sat. • 10-8 Sun.
475-7212 • 15901 Seymour Rd. • Waterloo



NEW YEAR

The New Year

Here's to a perfect time! Throughout the partying and the fun of the season's celebration, along with our hopes for joy and peace in the New Year, we wish you all a safe holiday.

Thanks for the very pleasant experience of your patronage and friendship.

CHELSEA LANES

and

MARK IV LOUNGE

Closed New Year's Eve & New Years Day

Ed • Kathy • Ed III • Heather • Kristal

Don • Bryan • John • Tim • Don P. and Chloe

Faist Morrow

Call Dave, Fred or Troy
475-8663



GM PURCHASED CARS

1997 Chev. Lumina 4-dr.	\$14,900
1997 Chevrolet Tahoe, 18,000 miles.	\$27,900
1997 Chevrolet Malibu, 4-dr.	\$15,900
1996 Buick Regal.	\$11,900
1996 Chev. Lumina, 4-dr.	\$11,900
1996 Chevy Corsica.	\$9,995
1996 Chev. Corsica.	\$9,995
1996 Olds Ciera, 4-dr.	\$11,900
1996 Chevy APV.	\$14,900
1995 Chev. Beretta.	\$8,995
1995 Saturn SCI.	\$8,995
1995 Olds Silhouette.	\$15,900
1995 Buick LeSabre, 4-dr., 24,000 mi.	\$16,900
1995 Chevy GEO Metro, 9,700 mi.	\$8,995

QUALITY USED CARS & TRUCKS

1995 Chev APV 30,000 miles	\$13,900
1995 Olds 88-30,800 miles.	\$14,900
1995 S-10 Blazer	\$16,900
1995 Chev. Ext. Cab 4x4.	\$18,900
1994 Chev. S-10 Blazer	\$13,900
1994 Olds ii LSS 4-dr.	\$13,900
1994 Chev Astro Van Conversion	\$9,995
1994 Olds Delta 88	\$10,900
1994 Olds Delta 88	\$13,900
1992 GEO Tracker, auto trans. air cond.	\$7,995
1992 GMC 3/4 ton 4x4	\$11,900
1991 Olds Bravada	\$10,900
1991 Olds 98, Nice	\$7,495
1991 Buick Riviera	\$6,995
1989 Chev S-10 Pick Up.	\$4,995
1989 Pontiac Bonneville.	\$4,995
1982 Lincoln Town Car	\$1,995
1982 Buick Skylark	\$1,295

QUALITY USED CARS & TRUCKS

"WHERE THE QUALITY USED
CARS ARE FOUND"

1500 S. Main St. • Chelsea, MI

Open 'till 8:00 p.m. Mon. & Thurs. Open Sat. 9-3

Chelsea's 1997 year-end review

(Continued from Page 13)

The resignation will go into effect at a date mutually agreeable to both Annesse and the school district.

The administrator is finishing her second year in this position for the Chelsea schools, and has primarily been responsible for overseeing the business operations of the district.

"I regret receiving her resignation," said Board of Education President Jane Diesing. "I think she's done a tremendous job for the district."

Annesse's husband has taken employment in the Grand Rapids area, and Annesse now plans to look for work in that region also. Chelsea Superintendent Ed Richardson said that although Annesse's contract extends through June of 1998, he expects that she will find employment in time for the next school year, since many districts are in the process of hiring.

1—A lawsuit has been filed against Chelsea Village by a resident dissatisfied with a Zoning Board of Appeals' decision to not grant him a variance from village ordinances. Jim Machnik, a property owner on Gene Drive, said the village is violating his constitutional right to use his land, and the village has taken away the value of his property.

"They've got me in a position where they won't let me do anything with my land," Machnik said. "I'm asking for the court to grant me a variance from the zoning ordinance or the road ordinance, or (the village) buy my land at a reasonable price, because they've taken away the value of my land."

1—The village is moving forward with closure of the Department of Public Works garage redemption project for an underground storage tank

that leaked gasoline by-product contamination into the ground some time ago.

Chelsea Village Council voted 4-3 at its April 22 meeting to use computer modeling to determine the potential for the chemicals remaining in the ground water at the site to adversely affect the nearby village supply well, as well as the potential for contaminated soil to pose an unacceptable threat to the public.

8—Over four dozen people attended Monday night's Lima Township Board meeting to state their concerns about parts of the township being denied privileges to the Chelsea District Library after August.

Lima Township, along with Lyndon Township, has declined to join the district. Consequently, township residents will not be able to use McKune Memorial Library after August.

8—Renovations for North Creek Elementary and South Meadows Elementary are scheduled to begin on Monday, June 16, according to Chelsea School District Operations Manager Ron Livengood.

Livengood said that the \$3 million renovations will make the schools look completely different, both inside and out. "These two schools are going to be totally remodeled when we move back into them," Livengood said. "People aren't even going to recognize them when they're done."

8—A study is close to being completed by Midwestern Consulting, a sub-consultant to Kingscott Associates, to suggest a solution to the water-drainage problems located on Freer Road just north of Trinkle.

According to the Chelsea School Board, Granger Construction constructed three water retention basins near

Freer Road to absorb all the rain water coming from school property.

15—Ten-year-old Zachary Duve died Monday night after his liver failed in the intensive care unit of Mott Children's Hospital. Zac was born with Juvenile Syndrome and has been in and out of the hospital his entire life. He received a partial liver transplant from his father, Ted, in January but it never quite adapted to his as doctors had hoped.

15—Chelsea School Board established the criteria for hiring a new assistant superintendent at the school board meeting on Tuesday night.

The board is seeking a replacement for Christine Annesse, who is moving to Grand Rapids with her husband. Annesse had been primarily responsible for overseeing the business operations in the district.

However, with Annesse leaving board members have essentially decided to split her old job into two positions.

"The new assistant superintendent will be in charge of instruction and personnel rather than business operations," said Superintendent Ed Richardson. "But we will also hire a separate director of business operations to perform the duties that Christine was doing."

15—Nearly 250 students from Beach Middle School attended Mill Lake Camp for the annual Sixth Grade Camp.

"It's really an outdoor academic program," said Assistant Principal Stephen Beyer. This year was the 27th consecutive year the camp has been held.

22—Chelsea Industries Inc., a major Chelsea automotive business since 1980, has been

sold to Stonebridge Industries Inc. of Sylvania, Ohio. The sale was completed Monday and is effective immediately. The price was not disclosed.

In a separate transaction, a sales agreement for the building, Chelsea's historic Clock Tower and the adjoining former Rockwell building, has been signed by Ronald Weiser, chief operating officer of McKinley Associates. The transfer is scheduled to take place by July 1. Weiser has indicated he is willing to continue talks aimed at using the Clock Tower building as a home for a new village office complex.

22—The Lyndon Township Board appeared taken by surprise at the turnout for their Tuesday, May 13 meeting, as residents flocked in as quickly as folding chairs could be found.

The 60 or so in attendance, bolstered by a petition signed by 636 registered Lyndon Township voters, were there to show support for the township to become a part of the Chelsea District Library.

22—Chelsea Village Council members voted unanimously last Tuesday night to hire a full-time zoning inspector.

Council selected Jim Drolett, who previously was the village's part-time zoning inspector, to become the first full-time zoning inspector.

29—It appears as if Dexter Township Board will not rescind its contract with a new zoning inspector hired under dubious circumstances earlier this month.

The board learned May 20 it approved a six-month probationary contract with Joyce Johnson of Pinckney as zoning

inspector without knowing Supervisor John Sdao and Tom Ehman, a resident and businessman involved in a zoning dispute with the township, screened all candidates before the board met them.

29—Bill Vermeylen was the guest-speaker at the annual Chelsea Memorial Day Parade. "I dislike the word the guest-speaker," Vermeylen said during his speech. "I am not a hero, just a good old sailor boy who served our country in time of need."

June...

5—Many of Chelsea's business and property owners along South Main Street attended the May 27 meeting of the Village Council to expose the cracks in the village's proposal to construct new sidewalks.

The proposed envisioned sidewalks on the west side of M-52 from the south property line of the Village Place condominium project down to Brown Drive. On the east side of the road, sidewalks were proposed from the Chelsea

Pets and Plants property down to the Michigan Department of Transportation car pool lot. The majority in attendance concurred that not only was the proposal unnecessary in view of the types of businesses that currently exist, but was short-sighted by not taking into account other factors that would make the sidewalks impractical.

5—The May 27 meeting of the Chelsea Village Council got off to a surprise start as Clerk Suzanne Morrison read a prepared statement from Trustee Richard Rigg, tendering his resignation.

However, during a special council meeting on Monday June 2, Rigg rescinded his resignation.

5—Chelsea Board of Education re-opened discussion of the future plans for the current high school building during its last board meeting May 27.

Board members agreed in the past that the building will

(Continued on Page 15)

ATTENTION LYNDON TOWNSHIP RESIDENTS

Letters of application are being accepted for 2 positions on the Lyndon Township Zoning Board of Appeals. If interested, please contact Janis Knieper, at 17301 M-52, Chelsea, MI 48118 or phone 313-475-3686. Deadline for submitting letter of application is January 12, 1998.

LYNDON TOWNSHIP BOARD

VILLAGE OF CHELSEA

TAKE NOTICE that the Village Council of the Village of Chelsea has, by resolution, presented a petition to the Board of Commissioners for Washtenaw County to alter the boundaries of the Village of Chelsea and to add to the Village of Chelsea the following described property:

BEGINNING at a point on the South line of Section 1, T2S, R3E, Sylvan Township, Washtenaw County, Michigan, said point bearing S 87 degrees 24' 20" E 717.89 feet from the South 1/4 corner of said Section; thence N 00 degrees 50' 20" W 231.00 feet; thence N 87 degrees 24' 20" W 66.00 feet; thence along the West line of the East 1/2 of the West 1/2 of the southeast 1/4 of said Section, N 00 degrees 50' 20" W 655.07 feet. Thence along the Westerly line of Highway M-52, S 18 degrees 55' 30" E 771.68 feet; thence the Easterly line of land described in Liber 774 of deeds, on Page 34, Washtenaw County Records, S 20 degrees 27' 35" W 175.03 feet; thence along the South line of said Section and along the centerline of Sibley Road, N 87 degrees 24' 20" W 110.30 feet to the point of beginning, being part of the East 1/2 of the West 1/2 of the southeast 1/4 of said Section 1 and containing 2.42 acres of land more or less, subject to the rights of the public over the Northerly 33 feet of Sibley Road. Also subject to other easements and restrictions of record, if any.

Said real estate lies generally North of Sibley Road, East of Warkner Road, and West of M-52. Said Petition shall be presented to the Board of Commissioners for consideration at its meeting to be held on the 21st day of January, 1998, at Washtenaw County Administration Building, 200 N. Main Street, Ann Arbor, Michigan, beginning at 6:45 p.m. or as soon thereafter as the Petition may be heard, and all persons having an interest in said matter shall be heard. Requests to address the Board of Commissioners may be made to the office of the Washtenaw County Clerk, Peggy M. Haines, Clerk, Washtenaw County Courthouse, Ann Arbor, Michigan 48107.

True copies of the petition and resolution are on file at the offices of the Chelsea Village Clerk, 104 E. Middle Street, Chelsea, Michigan, and the Washtenaw County Clerk, Washtenaw County Courthouse, Ann Arbor, Michigan, and may be inspected between the hours of 8:30 a.m. and 4:30 p.m. on regular business days.

VILLAGE OF CHELSEA

Suzanne C. Morrison, Village Clerk

VILLAGE OF CHELSEA

The following board members were present: President Steele, Village Manager Myers, Clerk Morrison.

The following trustees were present: Daut, Cashman, Hammer, Myles, Rigg, Merkel.

Also present was D. Bulson, M. Wriggelsworth, L. Weiker, B. Roberts, G. Davis, S. McElrath, J. Frank, B. Shepherd, J. Hardcastle, L. Kestenbaum, J. Drolett.

The first order of business was Public Participation and representatives from Nextel Corporation addressed Council regarding digital cellular service.

Motion by Hammer, supported by Daut to approve the Consent Agenda with the following changes:

Agenda: Unfinished Business - b) IPP Ordinance Amendment; move b) to c) on published agenda; a) Brown Drive; f) Library; g) Commerce Park Drive.

Change: President Steele updated Council regarding a potential pipeline project and notification of property owners, survey work and other activities on the West side of the Village.

To: President Steele updated Council regarding a potential pipeline project and notification of property owners, survey work and other activities to the West of the Village.

All Ayes. Motion Carried.

The Police Chief, Zoning Inspector and Electric Department Superintendent Department Heads presented their reports. Fire Chief Ellenwood presented his report for November 1997.

Motion by Hammer, supported by Myles to remove from the Table: Ann Arbor Transportation Authority Agreement. All Ayes. Motion Carried.

Motion by Hammer, supported by Rigg to extend the Ann Arbor Transportation Authority Agreement for one year with the understanding that serious efforts be made to improve ridership. All Ayes. Motion Carried. Agreement Attached as Appendix A.

Mr. George Davis, Varnum, Riddering, Schmidt and Howlett addressed the Council regarding the Village of Chelsea Sewer and Industrial Pretreatment Regulations.

Motion by Cashman, supported by Hammer to remove from the Table: Municipal Building Feasibility Study. All Ayes. Motion Carried.

Council discussed a couple of items regarding the Request For Proposal. There was a general consensus to not include the Fire and Police Departments in the renovation and to include Council Chambers.

The Village President discussed infrastructure concerns with Council.

President Steele updated Council regarding Brown Drive, meeting with Michigan Department of Transportation, Sylvan Township and the Washtenaw County Road Commissioner.

Items regarding the District Library will be discussed during the next meeting.

Communication from Faist-Morrow expressing concern regarding recent approval of signage on Commerce Park Drive.

Trustee Hammer inquired regarding Test Well Sites. Jack Myers updated Council regarding discussions with Consumers Energy.

Motion by Cashman, supported by Rigg to adopt Resolution Re: Amended Personal Property for IFT #97-209. All Ayes. Motion Carried. Resolution Attached as Appendix B.

Motion by Hammer, supported by Cashman to approve a Quit Claim Deed for Baltic Linc. contingent upon receiving a valid utility easement for same property (Parcel B - 7/17/97). All Ayes. Motion Carried.

Motion by Hammer, supported by Daut to enter into Closed Session for the purpose of discussing Personnel Items. Roll Call Vote. Ayes: Hammer, Cashman, Daut, Rigg, Myles, Merkel, Steele. Motion Carried.

Motion by Hammer, supported by Merkel to adjourn Closed Session. Roll Call Vote. Ayes: Riggs, Myles, Merkel, Daut, Hammer, Cashman, Steele. Motion Carried.

Council discussed a pending Hotel application for the Commerce Park Drive location and respective fees.

Motion by Cashman, supported by Merkel to adjourn the Regular Council Meeting. Time: 10:21 p.m. All Ayes. Motion Carried. Meeting Adjourned.

Suzanne C. Morrison, Village Clerk

VILLAGE OF CHELSEA

The Chelsea Village Council will meet the second and fourth Tuesday of each month during 1998. All meetings are held at the Sylvan Township Hall, 112 W. Middle Street, Chelsea. Any change in this schedule will be published.

Suzanne C. Morrison
Village Clerk

LIMA TOWNSHIP TAXPAYERS NOTICE

1997 Tax Collection Hours During December

Fridays 9 a.m.-5 p.m. at

Lima Township Hall, 11452 Jackson Road

Taxes may also be sent to our P.O. Box 59, Chelsea, MI 48118

SPECIAL COLLECTION HOURS

Tuesday, December 30 and Wednesday, December 31, 6-9 p.m. at

Lima Township Hall

Nanette L. Havens

Lima Township Treasurer • 475-1978

VILLAGE OF CHELSEA

1997 Tax Collection Hours During December

Fridays 9 a.m.-5 p.m. at

Lima Township Hall, 11452 Jackson Road

Taxes may also be sent to our P.O. Box 59, Chelsea, MI 48118

SPECIAL COLLECTION HOURS

Tuesday, December 30 and Wednesday, December 31, 6-9 p.m. at

Lima Township Hall

Nanette L. Havens

Lima Township Treasurer • 475-1978

SYLVAN TOWNSHIP PLANNING COMMISSION

NOTICE OF PUBLIC HEARING

on Tuesday, January 6, 1998 at 7:30 p.m.

at the Sylvan Township Hall, 112 W. Middle Street, Chelsea, MI 48118

Subject of Meeting:

A REZONING REQUEST LOCATED AT 800 FEET EAST OF SYLVAN ROAD ON OLD US-12, ALSO KNOWN AS THE NEW TOWNSHIP HALL SITE, TO CHANGE THE PRESENT ZONING FROM AGRICULTURE TO MU-1 (MUNICIPAL USE) FOR THE PURPOSE OF THE CONSTRUCTION OF A NEW TOWNSHIP HALL.

LEGAL DESCRIPTION:

COMMENCING AT THE WEST 1/4 POST OF SECTION; THENCE NORTH 733 FEET IN THE WEST LINE OF SECTION FOR A PLACE OF BEGINNING; THENCE NORTHEASTERLY 550 FEET IN THE CENTER OF HIGHWAY; THENCE SOUTH 685 FEET; THENCE WEST 525 FEET; THENCE NORTH IN THE WEST LINE OF SECTION TO PLACE OF BEGINNING, BEING A PART OF THE SOUTHWEST 1/4 OF THE NORTHWEST 1/4, SECTION 22, TOWN 2 SOUTH, RANGE 3 EAST, SYLVAN TOWNSHIP, WASHTENAW COUNTY, MICHIGAN CONTAINING 7.27 ACRES OF LAND, MORE OR LESS.

A COMPLETE COPY OF THE LEGAL DESCRIPTION IS AVAILABLE IN THE OFFICE OF THE CLERK, 112 W. MIDDLE STREET, MONDAY AND WEDNESDAY 9 AM TO 12 NOON.

.....

This notice is posted in compliance with PA 267 of 1976 as amended (Open Meetings Act), MCLA 41.27a (2)(3) and the Americans With Disabilities Act (ADA).

The Sylvan Township Board will provide necessary reasonable auxiliary aids and services, such as signers for the hearing impaired and audio tapes of printed materials being considered at the meeting, so individuals with disabilities at the meeting of public hearing upon 14 days notice to the Sylvan Township Board.

Individuals with disabilities requiring auxiliary aids or service should contact the Sylvan Township Board by writing or calling the following: LuAnn S. Koch, Clerk, 112 W. Middle St. Chelsea, MI 48118 - (313) 475-8890.

.....

Written comments may be sent to Bob Lange, Chair, Sylvan Township Planning Commission, 17212 Carolina Trace, Chelsea, MI 48118.

.....

.....

.....

.....

.....

.....

.....

.....

.....

DEXTER TOWNSHIP NOTICE

DEXTER TOWNSHIP PLANNING COMMISSION

TUESDAY, JANUARY 6, 1998, AT 7:30 P.M. AT THE

DEXTER TOWNSHIP HALL

6880 DEXTER-PINCKNEY RD.

DEXTER, MI. 48130

AGENDA:

1. Master Plan revision- presented by Mark Eidelson.

Bill Milam,

Chairman

PUBLIC HEARING

LYNDON TOWNSHIP RESIDENTS

TUESDAY, JANUARY 6, 1998 AT 7:00 P.M.

AT LYNDON TOWNSHIP HALL

1775 N. TERRITORIAL ROAD

CHELSEA, MICHIGAN

AGENDA:

1. An application for a Variance from the Private Road Ordinance by Don Steppert. Private road located off of Farnsworth Road, Stockbridge, MI.

2. Board may consider other matters as deemed necessary.

Written comments may be sent to: Lyndon Township Clerk, Janis Knieper, 17301 M-52, Chelsea, MI 48118.

The Lyndon Township Board will provide, if time after the request allows, necessary and reasonable auxiliary aids or services to individuals with disabilities at the public hearing.

Individuals with disabilities requiring auxiliary aids or services should contact the Lyndon Township Board by writing or calling: Janis Knieper, Clerk, 17301 M-52, Chelsea, MI 48118 or phone 313-475-3686.

A copy of this notice is on file in the office of the clerk.

LYNDON TOWNSHIP

Janis Knieper, Lyndon Township Clerk

CHELSEA SNOW OBSTRUCTION

SIDEWALK AND STREET OBSTRUCTIONS

VILLAGE OF CHELSEA, MICHIGAN

1998

An Ordinance prohibiting obstructions on sidewalks, providing for the removal of snow and ice, to prohibit the keeping of animals on the streets, walkways, alleys or common areas of the Village of Chelsea, to provide for the removal of snow and ice by the Village of Chelsea when the abutting owner fails to remove such accumulations, to provide for the collection of costs of such removal, by special assessment, and to provide for the enforcement of the Ordinance and penalties thereof.

THE VILLAGE OF CHELSEA ORDAINS:

23.251 Sec. 1 DISPLAY OF GOODS IN FRONT OF BUSINESSES.

That a space not to exceed two (2) feet in width shall be allowed for the display of goods in front of all places of business within the Village of Chelsea, provided, that such use of the space is permitted under the provisions of the Chelsea Village Zoning Ordinance, Ordinance No. 79 (15.000), and any amendments thereto, and further provided that such space shall be used for no other purpose than the display of such goods, wares or merchandise as may be from time to time on sale by the persons owning or occupying such places of business.

23.252 Sec. 2 OBSTRUCTIONS PROHIBITED EXCEPTIONS.

No person shall be permitted to obstruct any side or crosswalk, street, alley or common in the Village, except as provided in Section 1 (23.251) of this Ordinance. (ord. no. 94 eff. June 21, 1985).

23.253 Sec. 3 ICE AND SNOW REMOVAL

If shall be the duty of the owner or occupant of every parcel of real estate within the Village which adjoins a public right of way upon which there has been constructed a public sidewalk, so remove any accumulations of ice and snow which obstruct the free use of the sidewalk by pedestrians, within 48 hours after the accumulation of such snow or ice.

(ord. no. 94 eff. June 21, 1985)

Chelsea's 1997 year-end review

(Continued from Page 14)

house central offices for the district, community education offices and other programs like Alternative Education. However, they don't know how much of the building will be used for these programs and how much will be rented out to other businesses.

12—Voters in Chelsea re-elected school board members Janet Roberts and Sandra Merkel and passed a one mill sinking-fund millage during Monday's elections.

A total of 1,143 votes were cast in the board elections. Roberts received 437 votes, Merkel got 406, and Brian Koch ended up with 297. There were three write-in votes that were not counted.

12—Math, science and writing skills appear to be improving in the Chelsea School District based on the results of the 1997 High School Proficiency Test, which is a standardized test that measures if a student is proficient, novice or not yet novice in school subjects. The subjects include mathematics, science, reading, writing and communication arts.

"You have to be cautious when you look at these results," said Chelsea School District Curriculum Coordinator Laurie Kotchenruther. "A different class takes these tests every year."

12—Chelsea Board of Education agreed during Monday night's board meeting to push back the start of the next school year by one week.

The beginning of school throughout the Chelsea School District will now fall on Tuesday, Sept. 2, the day after Labor Day.

Superintendent Ed Richardson explained that the schedule switch will allow construction crews more time to work on Chelsea schools, which are receiving major facelifts this summer.

19—With the threat of a recall looming and charges of backdoor politics waged against him, Dexter Township Supervisor John Sdao resigned his post effective June 30 in face of public distrust.

The bomb shell was dropped on Dexter Township Board at its regular meeting, a month after Sdao was accused of backdoor politics by allowing a local businessman involved in a zoning dispute with the township to screen candidates for the zoning inspector post.

19—A conditional resolution to join the Chelsea District Library was unanimously adopted by Lyndon Township June 10 and will now be put before the Chelsea District Library Board.

Acceptance of the agreement would require approval by the majority of the library board and two-thirds of the current participating municipalities of the District Library Agreement.

19—Chelsea resident Sue Starkey is very excited about her new job.

Starkey, 49, has just completed her third week as the executive director of the Chelsea Area Chamber of Commerce. She was hired recently to replace Ann Feeney, who is retiring after 10 years of service at the end of June.

"It's been a very exciting and hectic first few weeks," Starkey said.

26—Gloria Mitchell was shocked when she heard the news that she was this year's Chelsea Citizen of the Year.

Monte Howard, Richard Steele, Julie Rutherford and Mitchell's husband, John, were on hand last Thursday at the Staffan-Mitchell Funeral Home as the award was presented to her. She received a dozen roses from Howard and received the key to the village from Village President Richard Steele.

26—Over an hour was spent on the public hearing portion of the Lima Township Planning Commission meeting, June 17, as Newlyn Road residents tried to convince the commission of the old adage that "business and pleasure don't mix."

In this case, the business is DeWolfe Excavators Inc., 8875 Dexter-Chelsea Rd., owned by Steven DeWolfe of the same address. DeWolfe operates under a special-use permit originally granted in 1981, in an area zoned agricultural.

The pleasure is the expectancy of idyllic environment some Newlyn Road residents say was the reason they moved into the neighborhood. They view DeWolfe's business as a growing impediment to that goal.

26—Work continues on the possible transformation of the Chelsea Fire Department into an area-wide department that would be owned by an authority rather than the village.

The fire board for the Chelsea Fire Department met Monday at station 2 north of town and heard presentations by Dave Sanders of the Southeastern Michigan Council of Governments (SEMCOG) and Chief Jack McArthur of the Dearborn Fire Department. McArthur had been involved in a similar effort in the Dearborn area.

July ...

3—Chelsea Village offices may be relocated to the Chelsea State Bank downtown facilities soon. Village Council agreed on a motion to begin

discussions concerning a lease agreement between the village and the bank during its last meeting Tuesday, June 24.

Trustee Frank Hammer met with officials from Chelsea State Bank at the site and said he was impressed with his visit.

3—Chelsea Village Council heard an update on the Freer Road flooding problems from Assistant Village Manager Bruce Pindzia during the last Village Council meeting on Tuesday, June 24.

Pindzia told council that he met recently with Chelsea School District Operations Manager Ron Livengood and Washtenaw County Drain Commissioner Janis Bobrin regarding the water problem along what he joked as "Freer Lake."

3—A few Chelsea High School boys and girls attended Boys State and Girls State in order to learn more about government.

Matt Adams, Brent Young,

Nate Cooper and Philip Grimm attended Boys State on the campus of Michigan State University from June 14-21.

Amanda Warren, Jaimie Maveal and Sarah Pruess attended Girls State on the campus of Central Michigan University also from June 14-21.

10—Chelsea School Board welcomed five new teachers to the school district, as well as said goodbye to Beach Middle School Assistant Principal Steven Beyer during the

school board meeting Monday night.

Beyer has served as the as-

sistant principal at Beach for the past two years.

(Continued next week)

JB's Party Center & Deli
528 N. Main, Chelsea • 475-9011

Red Wings T-Shirts 25% Off
Kegs Available
Michigan Rosebowl T-Shirts & Sweatshirts and much, much more!!!

This Week's Deli Special
Coney Dog chips & pop (20 oz.)
\$2.40 + tax & dep

Gift Certificates Available
Deli Open until 2:00 p.m.
Fax in your Deli orders 475-Deli
Hours: M-Th 6 am-10 pm, Fri 6 am-11:15 pm,
Sat. 8 am-11 pm, Sun. 9 am-7 pm

Happy New Year!

ATKINSON CHIROPRACTIC
7970 Clark Lake Rd. Chelsea, MI 48118
(313) 433-LIFE

TIRE Manta
at Mark's Auto
Your local tire store
We carry

DUNLOP **Cooper**
DRIVING TO THE FUTURE TIRE

100's of tires in stock!
Out the door pricing - No hidden charges

426-3163
8256 Dexter-Chelsea Rd. • Dexter

VICTORY LANE
QUICK OIL CHANGE

Where Service is a Sure Thing!
NO APPOINTMENT NEEDED


FULL SERVICE \$23.99 (most cars) INCLUDES:
5 Qts. Pennzoil (5W30-10W30-10W40) • New Oil Filter
Complete Chassis Lube • Check & Fill 5 Fluids & Tires
Other Services Available (additional charge): Transmission & Differential Oil Change, Replace Headlights, Wiper Blades, Synthetic Engine Oil, Oil System Cleaner, Fuel System Cleaner

NEW COMPUTER CAR CARE TRACKING SYSTEM
Manufacturer specs and requirements for your car at the push of a button throughout the Victory Lane system.
We keep your oil change records for you!

920 S. Main • Chelsea
(313) 944-1001 • Hours: M-F 8-7 • Sat. 8-5

\$2.00 OFF **PENNZOIL**
WORKS LIKE LIQUID BALL BEARINGS™
Complete oil change w/coupon • regular price: \$23.99
(Most Cars) • offer expires 1-31-98 • this offer not good w/any other offer. Offer good at these shops:
Chelsea, Ann Arbor (2 locations), Saline, Ypsilanti (Washtenaw Ave.), Plymouth, Brighton and Milford

Happy Holidays
from the
management at
Sof-Spray Car Wash



Porter Paint
When you care enough to use the very best.

Truly the one paint that belongs on a pedestal is Porter Trim & Wall Paint. The highest quality paint in the industry today.



Jerrold's
Quality Flooring & Paints
(517) 851-7450

Located in the Village Square
In Downtown Stockbridge



Warm Wishes
For a
Happy New Year



HARPER PONTIAC

JOANNE
Don-Donald
Pat-Cory,
David
and
Bob

Chelsea Family Physicians
1123 S. Main St. • Chelsea, MI 48118-1493
(313) 475-9800



Dr. Smith, Dr. Dorotinsky, Dr. Waldyke
APPOINTMENTS CALL 475-9800
Taking New Patients

~ Associated with
Care Choices Senior Insurance ~
Associated with Chelsea Community Hospital
and St. Joseph Mercy Hospital

OPEN
Mon.-Fri. 8 a.m.-11:30 p.m.
Sat. 9 a.m.-11:30 p.m.
Sunday 12 noon-9 p.m.

Buds 'n Stuff Party Store

NEW!
Packaged Liquor Dealer

BEER • WINE • GROCERIES
INSTANT LOTTERY

Ann Arbor St. at Baker
Dexter
next to Cottage Inn at the Gazebo
Ph. (313) 426-2681

SHOOTERS
NEIGHBOR GRILL AND PUB
2 Miles West of Dexter-Pinckney Rd. on Territorial
(313) 426-1600

HOURS: Mon - Closed; Tues-Thurs. 4 - 10 p.m.; Fri. 3-1 am & Sat. Noon - 1 a.m. Sun. 10-2 p.m. Brunch, 2-8 p.m. Dinner

PERCH DINNER \$6.95
Every Friday All-You-Can-Eat!
Our Delicious Fresh Perch is served with Cole Slaw, Fries, & Our Famous Homemade Garlic Rolls & Butter.

PRIME RIB DINNER
Every Friday
\$13.95 Full Cut • \$8.95 Petit Cut

BBQ PORK RIBS DINNER
Saturday Only
\$13.95 Full Slab all you can eat
\$8.95 1/2 Slab

PASTA DELIGHTS \$7.95
Served Daily-9 dishes to choose from

BANDS
Jan. 2-3 & 10 DJ by Jeff
Jan. 9, 16-17 Buster Blues Band
Jan. 23-24 & 30 Chill Factor
Jan. 31st 17 pc. Riverside Big Band
Feb. 6-7 & 13-14 Hip Pocket
Feb. 20-21 Buster Blues Band
Feb. 27-28 Big Pinky
Mar. 6-7 & 13, 14 & 20, 21 Allie
Mar. 27-28 Big Pinky

Your choice of fluffy scrambled eggs, bacon, link sausage, honey carved ham, juicy roast beef, BBQ pork, sweet potato casserole, diced potatoes & french toast with hot maple syrup. Start with our fresh salad and seasonal fruits, and finish with our famous pastry table. (Coffee • Juices • Fountain Drinks not included.) Small juice 75¢ Large \$1.25, four to choose from.

Sunday Breakfast Brunch
\$4.95 • 10 a.m. - 2 p.m. • \$4.95

BEER & LIQUOR PRICES HAVE BEEN LOWERED FOR YOUR DINING & ENTERTAINMENT PLEASURE!

COMFORT ZONE MECHANICAL

Heating & Cooling • Sales & Service • Custom Sheet Metal

LENNOX

Call for a **FREE** estimate on a new
Lennox Home Comfort System

3126 Broad St. • Dexter • 426-6350 • 433-1020



Meet The Faces Behind Most Medical Advances.

Before any medical project can break new ground, it has to get off the ground. And that takes money. We urge you to contribute to the hospital of your choice. Your help could mean a solution to many of today's most pressing medical concerns. The first of which is, quite frankly, funding.

Give To Your Local Hospital.
Give To Life.

National Association for Hospital Development



Business



405-Business Opportunity

Steel Building Dealership available in select open areas. Big profit potential in booming industry. Call Mr. Day 303-759-3200.

Education



500-Child Care

A SMALL WORLD CHILD CARE

Licensed, flexible hours, full and part-time, meals included. Nurturing educational growth and music. 734-429-5504

Saline daycare home, ages newborn to three years. Experienced caregiver, licensed, excellent references, creative play, outdoor activities, books, music, gym classes, arts and crafts, nutritious meals and snacks provided. Large playroom and yard. Full and part time available. Siblings welcome. 734-429-5515

Employment



600-General

ADULT/DIRECT CARE WORKER positions available found under classification 600a

ADMINISTRATIVE ASSISTANT needed for newspaper office. Attention to detail a must! Salary negotiable. Please call 697-8255

C & D LAUNDRY is now accepting applications for full and part time employment with some benefits. Please call (734) 475-7900 for details.

MANAGEMENT TRAINEES

Management assume responsibility for financial performance, supervision of merchandising, staff, scheduling, and more in a high volume setting. The opportunity for success is yours. We are looking for motivated, career paths could lead you to retail management, multi-unit management, or corporate positions in accounting, marketing, operations, purchasing, and more. Your college degree or experience in a higher volume retail environment, and ability to motivate a large crew in a fast-paced retail environment, may qualify you.

ASSISTANT MANAGERS FULL & PART TIME SALESPEOPLE

Individuals with good customer service skills wanted for fast-paced retail environment.

Benefits include: • 3 Pay Increases in First Year • Profit Sharing Plan • Company Paid Retirement • Vision Discount Plan • Medical, Dental, Life, Inc. (For Full-Time) • Paid Vacation, Sick Days • 401(k) Plan (Managers)

Ass't Managers & Salespeople candidates, call or stop in and see NICOLE, (313) 426-6616, 7500 Beller, Dexter, MI.

Management candidates, send resume to: Attn: Rich, 7743 Grand River, Brighton, MI 48116.

PRESS HELP FACTORY WORK WAREHOUSE

Ann Arbor, Dexter, & Saline. Openings on all 3 shifts. Must be 18, have transportation & a phone.

Adecco

THE EMPLOYMENT PEOPLE

(313) 975-2342

ADMINISTRATIVE ASSISTANTS & SECRETARIES

Full & Part-Time Positions. Comp. exp. required. Call for immediate interview.

Adecco

THE EMPLOYMENT PEOPLE

(313) 975-2342

ADMINISTRATIVE ASSISTANT SECRETARY

Evenings and some afternoons 20-25 hrs per week. Excellent with details, telephone, public relations, type, dependable, mature, super, wage negotiable. Call after 5pm at (313) 994-6600.

Are you one of those crazy people who love to clean?

Join us. We do residential cleaning and are looking for those who are honest, reliable, and take pride in a job well done. Must have car. Earn \$9 per hour. 313-973-8937.

A work at home income opportunity taking customer service calls. Part/Full time. From \$600 to \$5,500 per month. Please email to: SAGE@N.B.N.

639 Glenwood Ave. Dept 01 Ypsilanti, MI 48198

C & D LAUNDRY

is now accepting applications for full and part time employment with some benefits. Please call (734) 475-7900 for details.

INVERNESS INN

Looking for waitperson for evenings and weekends. Join a fun work environment! Call (734) 475-1515.

J.H. CAMPBELL Construction Co.

Looking for General Cleanup Person available during all stages of residential construction. Call Jack or Diane (313) 426-0098.

MACHINIST

Precision machinist wanted. Five plus years experience. CVC experience a plus. Excellent benefits and pay. Advanced Industries, Inc. Chelsea, MI 313-433-1800

MILAN AREA SCHOOLS

is accepting applications for custodial positions. Call 734-439-1541.

No funny hats or greasy fryers!

Expanding children's store with fun atmosphere, adding three part time positions. Advancement opportunities. 30 days. Call now 313-761-7103.

Part time help needed in the circulation department at the Saline Reporter, approximately 20 hours per week. Must be at least 18 years old. Late afternoon/evening hours on Tues, Wed, and Fri. Must be dependable. 313-429-7380 ask for Sue.

POSTAL RELIEF person

wanted. Saturday and possible more hours. Call (313) 426-0098 for info. Monday through Friday 8am to 5pm.

ROAD & RAIL MECHANICAL SERVICES

Currently accepting applications for in new location in Dearborn MI. Full & part time positions available. Decent pay, good benefits. Outside work, internal job environment. All qualified candidates must possess a valid driver's license & past company drug screen. Please call 248-1910 or apply at 25005 Woodward Blvd. Attn: Brian Hicks

SEWING MACHINE OPERATOR

Experienced. Day Shift. Good working conditions. New makes machine. Optical 401k. Profit Sharing. Great team. \$8.50 and up. Please apply in person at: Extang Corp., 710 Phoenix Dr. Ann Arbor, MI, or call: (734) 677-0051.

CONSTRUCTION LABORERS

Wextford Builders, Inc., a SE Michigan-based, nationally recognized residential builder is seeking hard-working, dedicated people to join our construction team. We offer a competitive salary, benefits and career opportunities for those not afraid to get their feet wet and their hands dirty.

If you seek to become a member of an industry leading team, apply in person at 1875 Orchardview Drive, Ann Arbor, MI 48108. Take State St. to W. on Ellsworth, past Lohr Rd. to L. on Lake Forest Drive East, to SW corner of Orchardview Drive.

If you seek to become a member of an industry leading team, please send a cover letter, including salary requirements and resume to: Project Manager, 1875 Orchardview Drive, Ann Arbor, MI 48108.

BUS DRIVER JOB FAIR

Wednesday, January 7

Indian Trails Motorcoach offers:

- Average Earnings \$26,000
- Paid training, no experience required
- 401(k) Retirement Plan with company contribution
- Paid holidays & vacations
- Medical benefits
- Must be 21 years of age

Attend our FREE 1 hour seminar with same-day interviews

10:00 a.m. January 7, 1998

28685 Smith Road, Romulus

Middlebelt exit off I-94

Chelsea School District Computer Technician

\$25,000 - \$30,000

Experience with Windows, administering E-mail, experience in bench and on site repairs.

Send resume by January 30, 1998:

Iva K. Corbett

Assistant Superintendent

Chelsea School District

500 E. Washington St.

Chelsea, MI 48118

SECURITY

Burns International Security has immediate full and part time positions in the Ann Arbor/Ypsilanti surrounding areas. • Paid Vacations & Benefits • Paid Training & Uniforms • Health, Dental & Vision Benefits

Please apply in person. Mon-Fri, 10am-4pm: 6309 Middlefield Road, Romulus (Across Office Center at Wick and Middlefield Road next to McDonald's). (313) 946-5151 Equal Opportunity Employer

Whitehall Healthcare Center of Ann Arbor

a 102 bed skilled nursing facility is currently seeking a Certified Dietary Manager. The qualified applicant should have three to five years experience in kitchen management, a knowledge of the MDS system and be able to handle multi-line phone and be computer literate. If interested in position please call (734) 475-0285 between 9 and 5pm.

MARHOFFER/CAMPBELL Building Company

located in Pinckney, looking for an independent, self-motivated bookkeeper/office person with computer skills. 30 hours/week. Call (313) 426-0098, ask for Jack or Diane.

PART TIME-Office assistant

20-25 hours a week. We are seeking an organized individual to help us with our filing, copying and other office duties. Please send resume to: Medical Office Manager, 760 Woodland Dr. E. Saline MI 48176

601-Office/Clerical

FULL-TIME/PART-TIME Receptionist positions available in Chelsea, Dexter and Stockbridge. People with telephone skills, will train.

Call: H & R Block at (734) 475-2752.

CLASSIFIEDS GET RESULTS! Call Heritage Newspapers today.

602-Medical/Dental

HOME HEALTH AIDES

Do you enjoy helping others? Do you like a fun, flexible workplace? Looking for a job that offers a competitive pay and potential for regular increases? We offer all that and more. We are now hiring caring people to assist the elderly in their home with activities of daily living. Ann Arbor, Ypsilanti and Livingston County locations. Some positions on the bus route. Call Amy today to learn more about this exciting career opportunity. 313-944-2101.

HEALTHCARE INNOVATIONS

(800) 766-7644

604-Domestic

Warm and caring person needed to care for eleven and eight year old, one to two evenings per week (5-10 p.m.) starting in early Jan. Responsibilities include: homework facilitation, dinner, transportation to and from activities, bedtime. Please call Karen or David to schedule personal interview. 313-944-2101.

COMMUNITY DEXTER SCHOOL

JOB OPENINGS

Equal Opportunity Employer

ACADEMIC

- Substitutes
- ATHLETICS

- Asst. Varsity Girls Soccer Coach
- J.V. Girls Head Soccer Coach
- J.V. Girls Asst. Soccer Coach
- Varsity Boys Tennis Coach
- Lifeguards

BUILDINGS & GROUNDS

- Custodians (Daytime)

CHILDREN'S SERVICES

- Substitutes

COMMUNITY EDUCATION

- Band Office Clerk
- Swim Instructors

FOOD/NUTRITION

- Kitchen Manager
- Cook/Cashier (4hr.)
- Temporary Cook/Cashier (2 hr.)
- Substitutes

PARA PROFESSIONALS

- High School Inclusion relief (4 hr.)
- Substitutes

SECRETARIAL

- Substitutes

TRANSPORTATION

- Sub Drivers
- All Departments

Telephone: 426-4623

Need help with fix-up or home improvement projects? Call a local company from our

Business and Service Directory

Dear Reader:

Heritage Newspapers makes every effort to insure that our Business Directory advertisers are honest, reputable and qualified to perform the types of work they contract for. However, you need to be an advertiser has misrepresented themselves, or feel that work performed is unsatisfactory, please follow the instructions given in the Business Service Consumer Guidelines listed below.



Place Your Ad Today!

The Dexter Leader/

The Chelsea Standard

475-1371

Deadline Monday, 4 p.m.

The Saline Reporter 429-7380

The Milan News-Leader

439-1802

Deadline Monday, 5 p.m.

007-AUTO SERVICES

CUSTOM GRAPHICS

AUTO & WINDOW LETTERING Also signs & banners

(313) 475-8773

014-CARPENTRY

JEFFREY D. CLARK CARPENTER

• Decks • Bathrooms • Ceramic tile • Windows/Doors • Siding • Painting/Staining • Etc.

Handyman

313-449-9106

Licensed and insured

018-CEMENT WORK

CONCRETE WORK

Winter Service Available

Includes heating and blanketing

Work done with pride

Integrity

Insured

(313) 429-3000

027-DIRT, STONE, SAND

BOBCAT WORK

Compact Loader

Low Winter Rates

Cheaper Than Renting

Licensed and Insured

(313) 665-4379

031-SALINE STONE AND DIRT

Excavating and Trucking

• Sand & Gravel • Special

onscreen disposal-call for prices

• Limestone • Voids • 5110

• Voids • 5110

FREE ESTIMATES

313-429-3000

517-456-4037

Charlie Mann

Mike Lova

050-HANDYMAN

"HONEY, DO" HOME REPAIR

• Licensed

• Insured

(313) 475-3191

HOME REPAIR SERVICE

Attention to detail in your home

• Painting • Drywall • Plaster Repair • Remodeling

• Plumbing and electrical repairs • General home maintenance • Family business

(313) 429-3143

DAVE'S HOME REPAIR

Plumbing, electrical, structural, remodels, kitchens, baths, floors, decks, woodfencing, tree work.

(313) 475-1136

062-HOME IMPROVEMENT

GENERAL CONSTRUCTION

• Remodeling • Repairs • Decks • Concrete • Excavating

Licensed Free Estimates

(313) 475-1080

REMODELING

Residential • Commercial • Basements • Baths • Kitchens • Offices

Custom Builder

Licensed and insured

TK Builders

(313) 429-3206

REMODELING SPECIALIST

Additions, Window and Door Replacement, Dormers, Kitchens, Vinyl & Aluminum Siding, Plaster/Cement Work, Licensed and insured

Foster Construction Co.

(313) 429-8498

BRAUN'S GENERAL CONSTRUCTION

• ROOFING • DECKS • POLE BARN • REPAIRS • ADDITIONS • No Job Too Small

313-429-1973

or 1-888-961-0016

(voice mail toll-free)

067-LANDSCAPING

TRI-COUNTY NURSERY

12424 Carpenter Rd. Milan

(313) 439-6884

Monday-Saturday 9am-6pm

067A-LAWN SERVICE

PINKNEY SMALL ENGINE REPAIR

Lawn Mowers, Riding Mowers, Garden Tractors, Trimmers, etc.

Chain Saws sharpened & repaired. Complete line of Jon Sereed brand products-chain saws, leaf blowers, etc.

250 S. Dexter

313-578-3288

064-PAINTING & DECORATING

PAINTING & DECORATING

Wallpapering removal. Complete A1 service. 30 Years

(313) 426-2279.

HOME PAINTING SERVICE

PALMER

John Freeman
Salesperson
of the Week
**No Payments
until March
1998**
w/approved
credit
TRUCKS
Big Trucks
95 F350 Crew Cab
Power Stroke Diesel
Dually 5 Speed
95 F350 Reg. Cab 4x4
Power Stroke Diesel
Auto
96 F350 Reg Cab 4x4
V-8, Auto
97 F350 Crew Cab, 4x4,
V-8, Auto
88 F350 Reg. Cab, 4x4,
Auto, 7.3L Diesel
95 F350 Reg Cab, 4x4,
Auto XLT, Loaded
97 F350 Crew Cab,
Power Stroke Diesel,
XLT, Dually, Auto
90 F350 Crew Cab,
V-8, Auto, Air
3/4-Ton
93 F250, Reg. Cab, 4x4,
Auto, Plow
96 F250, Reg. Cab, 4x4,
Auto, Power Stroke
Diesel, XLT, Plow
96 F250, Reg. Cab, 4x4,
Auto, XLT Plow
90 F250, Reg. Cab, 4x4,
Auto, V-8, Plow
96 F250, Reg. Cab, 4x4,
Auto, V-8
95 F250, Super Cab, V8,
4x4, Auto, Very Low
Miles
95 F250 Super Cab, V8,
Auto, 4x4, XLT, Loaded
1/2 Ton
93 F150 Flareside, 4x4,
V8, Auto
94 F150, Auto, V8
93 F150, V8, Auto, Air,
XLT, 4x4
94 F150 Short Box
92 F150 4x4, V8, 5
Speed, XLT
91 F150 Super Cab, V8,
Auto, Air, Two-Tone
Paint
90 F150 Super Cab,
Auto, V8, Stereo
93 F150 Super Cab,
XLT, Two-Tone, Auto, V8
92 F150, V8, Auto, Air
92 F150, V8, Auto, Air,
4x4
95 Chevy C1500 Ext.
Cab 4x4
SPORTS UTILITY
97 Expedition, Only \$375
per month, Call for
details.
97 Explorer XLT, 4x4,
Auto
95 Explorer XLT, 4x4,
Auto
91 Explorer XLT
MINI VANS
95 Villager GL
95 Aerostar Ext., Loaded
CARS
95 Escort, 4 Dr., Auto
91 Escort 4 Dr., Wagon,
Auto
97 Mystique, Auto, Air
97 Contour, 5 Speed, Air
96 Contour, 5 Speed, Air
97 Tracer, Auto
89 Grand Marquis, Very
Low Mileage
97 Taurus 4-Dr., GL
88 Town Car, 4 Dr.
95 Taurus GL, 4 Dr.
92 Taurus GL Wagon, V8
96 Escort 2 Dr., 5 Speed
93 Sable, 4 Dr., GS,
Auto, V8
91 Topaz, 4 Dr., Low
Miles, Auto
94 Topaz, 4 Dr., Very Low
Miles, Auto
96 Taurus GL, Very
Clean
91 Taurus GL, Power
Seat, Windows, Locks
96 Oldsiera, Only
\$10,900
97 Tracer, 4 Dr., Auto, Air
97 Tracer, 4 Dr., Air,
Silver
88 Topaz, Auto, Air, 4 Dr
93 Taurus, 4 Dr., LX,
Loaded
95 Probe SE Pkg., Auto
92 Taurus, 4 Dr., V8,
Auto, Air
91 Town Car Cartier,
Leather, Loaded
92 Grand Marquis,
Loaded
96 Crown Vic, Low Miles,
Fully Equipped
94 Grand Marquis, Very
Clean

Ask for
John Freeman,
Kevin Kern,
A.J. Minix,
John Chamberlain,
Dennis Day, Tom Kern
or Paul Charles
PALMER
CALL COLLECT
313-475-1800
Michigan's Oldest
Ford Dealer

PALMER
FORD EXHIBITS
1-888-175-1301 CAR LOT
Chevrolet
Michigan's Oldest
Ford Dealer
**Employee of
the Month**

**Chris
Ward**
3
BIG
LOTS
**5
Million
(\$5,000,000)
in
Inventory**
**Salesperson
of the Week**

**Paul
Tomshany**
***UP TO
\$3000
REBATES**
ASPIRES
ESCORTS
2X2
MUSTANG
CONTOURS
MYSTIQUES
TAURUS
MERCURY
SABLE
TRACER
CROWN
VICTORIA
GRAND
MARQUIS
TRUCKS
MOUNTAINEER
EXPLORER
EXPEDITION
RANGER
F-150
F-250
F-350
SUPER CAB
CREW CAB
DUAL LINES
VAN
CONVERSIONS
PALMER
CALL COLLECT
313-475-1800
Michigan's Oldest
Ford Dealer

**Merchandise
For Sale**

700
700-Miscellaneous
**OLD FUEL
TANKS**
Removed and
Disposed Of.
Also fuel oil
disposed of.
(313) 429-3000
GOT A CLUNKER?
Call Heritage Newspapers
Classified for best results.
**CREDIT
PROBLEMS?**
Need a Car, Truck or a Van?
"CREDIT REPAIR"
WHILE YOU DRIVE!
I CAN HELP. CALL: **CHUCK AT
EconoCar**
663-2033
CREDIT PROBLEM?
Bankruptcy? Slow Pay? Medical
Bills? Divorce? Slow Credit?
Need A New/Used Vehicle?
**WE CAN
HELP!**
**APPLY FOR A CAR LOAN WITH A
TOUCH-TONE PHONE.**
24 HOURS A DAY
7 DAYS A WEEK!!!
Enter your credit
information on your
touch-tone phone
Jax Facts
517-787-8200
4645
CALL TOLL FREE
1 888 278 6634
**REBUILD YOUR CREDIT
TODAY WITH US**
art moehn
CHEVROLET • HONDA • GEO
DOWNTOWN JACKSON

TRAILER & PARTS
New & used enclosed cargo
trailers. Many to choose from.
Full line of goose-neck, utility,
and horse trailers available.
Axles, fenders, hubs, springs,
lights, couplers, etc. in stock.
BROWN TRAILER, INC.
Three miles E. of Clinton, MI
on US-12
(817) 486-4820
701-Appliances
WHIRLPOOL SIDE-BY-SIDE
refrigerator.
\$200. or best offer.
Call (313) 433-0236
702-Antiques
**ATTIC TREASURES
ANTIQUES**
Is celebrating 30 years of business
in the Saline Area and
has available a large selection
of antiques and collectibles.
Always buying!
10350 Moon Road, Saline
313-429-4242
TOY SHOWN
Sun. Jan 4, 9am-3pm
Dearborn Civic Center
15801 Michigan Ave.,
corner of Greenfield
Admission: \$4
Antique and collectible toys.
Too numerous to mention.
Early buying rights: Sat.
12noon-4pm. 248-564-8697.
**WANTED: Antiques and Col-
lectibles - anything old. No
big furniture. Call Jean Lewis
(313) 476-1172.**
707-Sporting Goods
ICE HOCKEY Goalie chest pro-
tector - Vaughn VP750. Good
for squirt or bottom player.
Excellent condition. \$125.00.
Goalie skates, CCM, size 9
adult. \$40.00. (734) 475-2610.
710-Firewood
**Firewood
For Sale**
Mixed Dry
Hardwood
2-Face Cords
Minimum
\$100
Delivered
Call
475-8952
FIREWOOD
Seasoned Oak 350/acre
cord delivery included.
For fast, friendly service call:
(313) 498-3352.
**SEASONED
FIREWOOD**
Stored inside
\$60 per face cord
Saline area delivery
313-429-7494.
IT'S A FACT!
Classifieds Sell.

711-Products
APPLES
Several varieties still
available. Please call
before coming.
Closed Sundays.
LESSER FARMS
(313) 426-8009
714-Crafts/Bazaars
CRAFTERS: Market your
products from your home via
Michigan.com a free infor-
mation. 1-800-542-4641.
**Pets/
Animals**
800
800-Pets for Sale
FREE TO A GOOD HOME
Sprayed female black lab
mix. 18 months old, about 65
lbs. All shots up to date. Good
family dog. Needs lots of ex-
ercise and attention. Crate
trained - crate can go with
dog.
734-997-2530.
PURE BOXER PUPPIES
Black and white litter, car-
mell mother. Not registered.
Born November 26th, 1997.
Call Kathy at (734) 475-7047.
**801-Pet Services/
Supplies**
Lower health costs begin with
preventive healthcare.
ALL NEW HAPPY JACK UGUI-
VICT prevents internal para-
sites in dogs. Available in 8 oz
economy size at FARMER'S
SUPPLY. (734) 475-1777.
802-Horses/Livestock
ENGLISH AND WESTERN
Show Barn
Hassalls available.
New facility between Dexter
and Chelsea. Lots of TLC.
(313) 426-2811.

Automotive
900
**902-Imported/Sports
Cars**
★ **MAZDA 323 - 1988.**
Three door, excellent
condition. No rust.
Lots of new parts. Has had
TLC-Great ride for car. \$1,500.
734-429-5322 leave message.
**905-Sport Utility/
4 Wheel Drive**
★ **GMC SUBURBAN SLT, 1996.**
cherry ice metallic, four
wheel drive, leather, tailgate,
41,000 miles, luggage carrier,
front & rear heating/air, six
way power seat, 12 CD
changer, bucket seats,
aluminum wheels, wheel
flares & running boards,
heavy duty trailinging,
electronic shift transfer case,
HO transmission all cooler &
six year extended warranty.
Lo-Jack security. Call (248)
471-2988. Mint condition!
Recreational
950
**GOING ONCE
GOING TWICE
GONE**
List your vacation where the
action is - classified. Try our
total package which covers all
the areas from Dearborn to
the Ohio line, and from the
Detroit River to Washenaw
County.

WEEKLY SPECIALS
Quality Cars at Affordable Prices!
GE0 '92 METRO
4-door, H/B, 5-sp., extra clean,
great economy! Fully inspected &
ready to go! Call Chuck!
Only **\$2,850**
CHEVY '94 CAVALIER RS
4-dr., white, auto, A/C, very sharp!
Call Chuck!
Won't last at **\$6,244**
FORD '89 BRONCO XLT
Eddie Bauer, V-8, auto, black
w/gold trim, only 68,000 actual
miles! Hurry on this one! Call
Chuck!
Only **\$8,988**
PONTIAC '90 GRAN PRIX LE
2-dr., white, red cloth, auto, V-6,
extra sharp! Priced to sell! Call
Chuck!
Only **\$5,988**
The Used Car Dealer "You Can Trust!"
Econo Car
Ann Arbor's Newest & Only Independent Used Car Lot
663-2033 • 438 W. Huron St., Ann Arbor

Michigan Streams and Lakes

**Stream
MAP
of Michigan**
Why every fisherman needs this map
It is estimated that 10% of all the fishermen catch 90% of the fish.
Regardless of which group you fall into... there's a sure way to up your
odds... simply try new fishing waters. Fish where few fishermen ever
fish.
Michigan is loaded with great fishing waters...many of them over-
looked. From the AuSable River to all of the Great Lakes tributaries to
the Pere Marquette River...thousands of miles of streams, lakes and rivers
are now easy-to-locate on one map.
Professor Higbee's Stream Map of Michigan is the first and only
highly detailed map of its kind. This new 4 foot by 4 foot
color map shows virtually all of the 35,000 miles of
Michigan streams & lakes on both peninsulas. That's
almost two times the earth's circumference!
**RAVE
REVIEWS**
"It is amazingly detailed and
names some creeks in the
Mohawk Valley that can't even
be found on topographic
maps."
John Pitarres
OBSERVER-DISPATCH-Ulrich
"If you're looking for the most
definitive maps ever created
depicting every single creek,
river, stream, pond and lake
...then "Professor Higbee's
Stream Maps" are without
question the finest."
Howard Brant
THE NEWARK STAR-LEDGER
"It is in showing where to find
out-of-the-way trout streams
that makes the map such a
treasure to the fisherman."
Joe Gordon
TRIBUNE-DEMOCRAT-
Johnstown.
FREE LOCATION GUIDEBOOK INCLUDED
Pinpoint the best fishing in Michigan with this valuable 40 page
guide. Easily locate over 5,000 streams and lakes shown on the
"Stream Map." Your map and guidebook will take you to the top
443 fishing waters - select waters for 14 species of gamefish.
ORDER YOUR COLOR STREAM MAPS
Available rolled or folded. ALSO AVAILABLE in heavy gauge LIFE-
TIME GUARANTEED, glass-like clear-lamination, write-on wipe-off
surface, with brass eyelettes for easy hanging.
Send me 4 FT by 4 FT ROLLED map(s) postage paid at \$23.45 ea.
Send me 4 FT by 4 FT FOLDED map(s) postage paid at \$23.45 ea.
Send me 4 FT by 4 FT LAMINATED map(s) postage paid at \$43.45
Check or money order enclosed \$..... SHIPPED PRIORITY MAIL
SHIPPED IN A STURDY TUBE
Name _____
Address _____
City _____ State _____ Zip _____
**The Chelsea Standard/
The Dexter Leader**
20750 Old US-12
Chelsea, MI 48118

Find it!

**Whether you're
looking for a pet,
a home or a car,
you'll find lots of
good deals in the
Heritage Classifieds.**
**The Dexter
Leader and
Chelsea
Standard
Auto
Classified
section
has the
new or
used vehicle
you've been
looking for...**
**Placing
your ad
is now
easier than
ever, too!**
**Call
475-1371**

**now
accepted**
**Fax it...
313-475-1413**
**The
Dexter
Leader/
Chelsea
Standard
Newspapers**

Houses of Worship

Assembly of God
First Assembly of God
14900 Old US-12, Chelsea
475-2615
Rev. James Massey, Pastor
Sunday: Sunday School, 10 a.m.
Worship, 11 a.m. and 6 p.m.
Wednesday: Prayer service, 6 p.m.

Chelsea Christian Fellowship
337 Wilkinson St.
475-8305
John Dambacher, Pastor
Sunday: Sunday School, 9 a.m.
Worship Service, 10 a.m. Evening Service 6 p.m.

Baptist
Faith Baptist
Faith-In-Action Bldg.
Main St., Chelsea
475-7841
Jack Story, Pastor
Sunday: Worship, 10:30 a.m., 6 p.m.

New Life Baptist
(meeting in
Pierce Lake Elementary School)
433-0105
Dr. Ray Babb, Pastor
Sunday: Worship, 10:15 a.m.

North Sharon Baptist Church
17999 Washburne Rd., Grass Lake
428-7222
Bobby D. Toler, Pastor
Sunday: Sunday School, 10 a.m.; Worship, 11 a.m.; Evening Service, 7 p.m.
Wednesday: Bible Study, 7 p.m.

Catholic
St. Mary's Catholic Church
14200 Old US-12, Chelsea
475-7561
Rev. Fr. Philip Dupuis, Pastor
Saturday: Confessions, 12-1 p.m.; Mass, 6 p.m.
Sunday: Mass, 8 and 10 a.m.
Weekdays: Mass, 9 a.m.

Church of Christ
Church of Christ
13661 Old US-12, East, Chelsea
475-8458
Dr. Joe Lorimer, Evangelist
Sunday: Sunday School, 9:30 a.m. Worship Service, 10:30 a.m. Bible study, 6 p.m.
Wednesday: Bible study, 7 p.m.

Church of the Nazarene
Church of the Nazarene
805 W. Middle St., Chelsea
475-2526
Jeff Crowder, Pastor
Sunday: Sunday School, 9:45 a.m. Worship, 11 a.m.
Wednesday: Small groups, 7 p.m. in homes.

Episcopal
St Barnabas
20500 Old US-12, Chelsea
475-8818
Rev. Dr. Jerrold Beaumont
Sunday: Christian Education, 10 a.m. Services, 10 a.m.
Wednesday: Services, 7:30 p.m.

Free Methodist
Chelsea Free Methodist
7665 Werker Rd.
475-1391
Mearl Bradley, Senior Pastor
Nathan Perkins, Associate Pastor
Sunday: Traditional worship, 8:30 a.m. Sunday School, 9:50 a.m. Contemporary worship, 11 a.m. Evening Service, 6 p.m.
Wednesday: Mid-week services.

Lutheran
Faith Evangelical
9575 North Territorial, Dexter
426-4302 or 426-8442
Rev. Mark Porinsky, Pastor
Sunday: Sunday School, 9 a.m. Worship, 10 a.m.

Our Savior Lutheran
1515 S. Main St., Chelsea
475-1404
Rev. Dale Grimm, Pastor
Sunday: Heritage Service, 8:15 a.m. Education hour, 9:30 a.m. Celebration Service, 10:30 a.m.

St. Jacob Evangelical
12501 Riethmiller, Grass Lake
517-522-4187
Rev. Paul Huebner, Pastor
Sunday: Sunday School and Bible Class, 9 a.m. Worship, 10:15 a.m.

Zion Lutheran
3050 S. Fletcher Rd., Chelsea
475-8064
David Hendricks, Pastor
Sunday: Sunday school, 9 a.m. Worship, 10:15 a.m.

Methodist
Salem Grove United Methodist
3320 Notten Rd.
475-2370
Rev. Jim Paige

First United Methodist
128 Park St., Chelsea
475-8119
Rev. Richard Duke
Rev. Rebecca Foote
Sunday: Worship, 8:30 a.m. and

11 a.m. Sunday School, 9:45 a.m. Worship (contemporary format) 5 p.m.

North Lake United
14111 North Territorial Rd.
475-7569
Rev. Wayne Hawley, Pastor
Sunday: Sunday School, 9:30 a.m. Worship, 10:30 a.m. Fellowship, 11:30 a.m.
Tuesday: Bible Study, 7:15 p.m. Choir, 8 p.m.

Waterloo Village
United Methodist Church
Washington St., Waterloo
Mona Joslyn, Minister
Sunday: Sunday school, 8:45 a.m. Worship service, 11 a.m.

Chelsea Retirement Chapel
805 W. Middle St., Chelsea
475-8633
Rev. J. Gordon Schleicher
Sunday: Worship service, 9:30 a.m.

Mormon
Church of Jesus Christ of Latter-Day Saints
1330 Freer Rd., Chelsea
475-1778

Non-Denominational
Baha'i Faith
705 S. Main St., Chelsea
475-2718
Monday: Devotional meeting, 7 p.m.

Chelsea Hospital Ministry
775 S. Main St., Chelsea
475-1311

Covenant
Anthony Dickerson, Pastor
50 N. Freer Rd.
475-2508
Sunday: Sunday School, 9 a.m. Worship, 10:30 a.m. Communion first Sunday of every month.

Manuel Bible
145 E. Summit St., Chelsea
475-8936
Ronald W. Clark, Pastor
Sunday: 9:30 Sunday School, 10:45 worship, 6 p.m. evening small groups
Wednesday: 7 p.m. prayer service.

Mt. Hope Bible Church
12884 Trist Rd., Grass Lake
(517) 522-8182
Joseph O'Neill, Pastor
Sunday: Sunday School, 10 a.m.; Morning Worship, 10:30 a.m.

The Chelsea Church Calendar Is Sponsored by
JIFFY mixes
CHELSEA MILLING COMPANY
CHELSEA, MICHIGAN 48118

Catholic
St. Joseph Catholic
Fourth and Dover Streets, Dexter
426-8483
Rev. Bernard L. Tyler, Pastor
Saturday: Weekend Liturgy, 5 p.m.
Sunday: Liturgy, 8 a.m., 10 a.m. and 12 noon. Nursery open 10 a.m.-noon.

Episcopal
St. James
3279 Broad Street, Dexter
426-8247
Rev. David J. Horning
Sunday: Holy Eucharist, 8 a.m. and 10 a.m. Sunday School, 10 a.m.

Lutheran
Faith Lutheran
9575 N. Territorial Rd.
426-4302
Mark Porinsky, Pastor
Sunday: Sunday School, 9 a.m. Worship 10 a.m.

Peace Lutheran
6105 Jackson Rd., Birchwood Plaza
313-930-2324
Rev. Larry Courson
Sunday: Sunday School 9:45 a.m.; Praise, 8:30 a.m.; Worship 11 a.m.

Methodist
Dexter United Methodist

The Dexter Church Calendar Is Sponsored by



PILOT INDUSTRIES, INC.

To place your classified ads
call 475-1371

AREA DEATHS

LILLIAN CAWLEY

Dexter
Age 68, died Thursday, Dec. 18, 1997. She was born on Nov. 21, 1929 in Detroit, daughter of Elmer and Julia Hix. She was the loving and caring mother of her five children Cheryl (Michael) Aldrich, James (Mindy) Cawley, Doreen (Jake) Haist, Lily (Tim) Kittle, Patrick (Karen) Cawley. She also was the loving and caring grandmother of her eight grandchildren. She is also survived by two sisters and one brother.
was celebrated, Monday, Dec. 22, 1997, at 10 a.m. at St. Joseph Catholic Church with the Rev. Fr. Bernard Tyler as Celebrant. Interment followed at St. Joseph Catholic Cemetery. The family received friends Sunday 2-4 p.m. and 7-9 p.m. at the Hosmer-Muehlhig Funeral Chapel, where a scripture service was held at 7 p.m. For those who wish, contributions may be made to American Lung Association in memory of Lillian Cawley.

TOM L. JACOBS

Grass Lake
Age 90, died Tuesday, Dec. 23, 1997 in the home of his granddaughter, Tami Houle. He was born on November 23, 1907 in Tiffin, Ohio, the son of Charles and Ella (Nutting) Jacobs.
Mr. Jacobs has lived in the Chelsea area since 1976, moving from Wyandotte.
He married Betty Dorau in 1955, and she preceded him in death on March 9, 1997. Survivors include one daughter, Patricia Koch of Grass Lake; one son, Gary (Carol) Brown of Grass Lake; nine grandchildren, Jeri Harris, Terry Koch, Kathy Kentala, Tami Houle, Randy Koch, Deenan Brown, Kevin Brown, Kristen Brown, and Kraig Brown; and 17 great-grandchildren. He was preceded in death by one granddaughter, Kelli Brown.
Funeral services were held Friday, Dec. 26, at Cole Funeral Chapel, Chelsea, with Rev. Fr. Matthew Weber, S.C. officiating. Burial followed at Mt. Hope Cemetery in Waterloo. Memorial contributions may be made to Healing the Children.

STANLEY J. MONTANGE

Chelsea
Age 76, died Dec. 26, 1997 at the Veterans Hospital in Ann Arbor. He was born July 21, 1921 in Hinton, Iowa, the son of Mathew L. and Alma B. (Stebner) Montange. Stan had been a resident of Chelsea for 41 years. Prior to serving in the South Pacific in World War II as a sergeant in the Marine Corps, he worked in the Ann Arbor Post Office. After World War II he was employed at Hoover Ball Bearing for two years and then returned to farming in Iowa. He moved his family to the farm in Chelsea in 1956. Mr. Montange was retired from Chrysler after 26 years of service. From 1964 until 1970 he operated a riding stable. He had volunteered more than 1,000 hours at the VA Hospital. In 1991, 1992, and 1993 Stan participated in the National Veterans Golden Age Olympics, receiving a gold medal in 1992. He was a member of VFW Post #4096 in Chelsea, the DAV, the Herbert J. McKune American Legion Post #31, the Knights of Columbus Council 3092 and the Cardinal O'Hara Assembly, 4th Degree Knights of Columbus and the International Rosary Crusade.

On Dec. 26, 1942 in Ann Arbor he married Mary E. Nicholson and she survives. Also surviving are his children, Ronald and his wife, Nancy Montange of Chelsea, Kathleen Marie Montange of Portland, Ore., Gary L. Montange of Chelsea, and Mark S. Montange of Plano, Texas; eight grandchildren, Matthew, Jeff, Mike, Mallia, Jeremy, Eric, Nathan and Dominic; one brother, Lavern Montange, of Kingsley, Iowa; and one sister, Mary Nybery of Mesa, Ariz. He was preceded in death by three daughters, Barbara Jean, Patricia Ann, and Mary Ann; five brothers, Cliff, Mel, Ted, Freeland, and Clay; and two sisters, Viola and Betty.

The funeral mass was held Tuesday, Dec. 30 at 11 a.m. at St. Mary's Catholic Church, with the Rev. Fr. Philip Dupuis officiating. The Vigil and Rosary were held on Monday at the Staffan-Mitchell Funeral Home, with Deacon Richard Shaneyfelt officiating and the Cardinal O'Hara Assembly 4th Degree Knights of Columbus providing their honor guard. Burial with Military Honors provided by the Veterans Honor Guard of Washtenaw County was in Mt. Olivet Cemetery, Chelsea. Expressions of sympathy may be made to Cystic Fibrosis or The Conception Abby in memory of Fr. Dominic, Conception, Mo.

Stan was a beloved husband, father, grandfather, and best friend who will be greatly missed.

Support
your local
businesses

Dexter



Photo by Mary Kumbier

—Madrigal Dinner—

Dexter High School students Tom Cook and Jesse Miller presented a boar's head at Cousins Heritage Inn when the high school choir held its annual Madrigal Dinner Dec. 14-15.

Beaton novels on agenda

Chelsea District Library's Mystery Book Club begins the new year with a discussion of the mystery novels written by Scotland native M.C. Beaton Monday, Jan. 5, 7:30 p.m. at McKune House.

Beaton writes two mystery series. She is best known for the 12 novels in the popular Hamish MacBeth series. Her newest mystery series stars Agatha Raisin, a London advertising retiree who lives in the Cotswolds.

Rhona Veling will host the meeting and lead the discussion about Beaton's work. For more information about

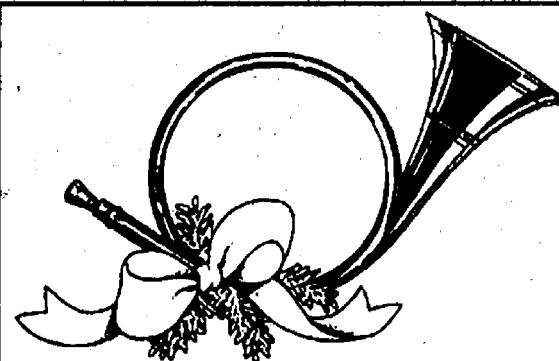
the mystery book group call the library at 475-8732. New members and guests are always welcome.

TUPPERWARE

To Buy or Sell
or Receive a New Catalog
Call

Sandra L. Milazzo,
Mgr.
(313) 475-7666

3D ENTERPRISE



Closed until Monday Jan. 5, 1998

Chelsea Hearing Aid Centre

Testing • Repairs • Batteries • Accessories

134 W. Middle
Suite A
313-475-9109 or 800-548-1965

Walk-ins Welcomed
Mon-Thurs 9-4:30
Fri, Sat. & Eves by Appt.

Specialist in Orthodontics

- 20 years experience
- No referral necessary

515 S. Main St., Chelsea
(313) 475-2260



Raymond P. Howe, D.D.S., M.S.

NEWCOMERS WELCOME SERVICE

"A tradition of helping newcomers feel at home"
Please call the following for your Complimentary Welcome Packet



DIANE CLARK
Chelsea Representative
Please Call Diane
475-0258



NANCY DONAHUE
Dexter Representative
Please Call Nancy
426-8420

Chelsea Vision Care



Dr. Nancy Fraser

Comprehensive Eye Examinations

- Includes cataract evaluations and glaucoma testing

Contact Lens Examinations

Eyeglass prescriptions filled

- Includes outside prescriptions

All new eyewear collections

Most insurances accepted

Evening appointments available

Call today 313-475-9953
Chelsea Professional Building
1200 South Main
Chelsea, MI 48118

Office Hours:
Mon. & Fri. . . . 9-5
Tues. & Thurs. . . 9-7
Closed Wednesday



INTERNET JOURNAL

TERRY LINDSTEDT

"Are you an Elvis fan," the person in chatroom asked me. "Well, not exactly," I replied, and proceeded to qualify my answer with recollections of Elvis as I grew up, and my feelings of sympathy toward the man as he grew older, and then died.

I'd never given Elvis so much thought in my life. Since that simple question, I've gained interest in finding out just what sort of Elvis information is available online. I should have guessed that I would encounter more than any one person would ever need to know. It's simply overwhelming!

There are magazines which have enshrined Elvis in his own Web site. Life magazine is one of these, at <http://mouth.pathfinder.com/Life/rocknroll/elvis/elvis.html>. The Dallas Morning News Online at <http://www.dallasnews.com/elvis/> has a 20th-year death anniversary "room" as a tribute to the King, which includes a slide show, an original newspaper review of his last Dallas performance and another of his death, as well as pages which remember and commemorate him.

Then there are pages which salute Elvis impersonators, such as "A Thousand Points of Elvis" at http://www.netlink.com/~timelvis/elvis_ent.html.

This page is an entire collection of links to Elvis impersonators' Web pages, with brief descriptions and the impersonators' names. Some have made it easy to book them for your wedding, a birthday or anniversary, or even conventions. There are also Elvis costumers, such as American Costumes at <http://www.lvcvbermail.com/american/costumes.html>, because, after all, Elvis impersonators need Elvis jumpsuits. Don't they? Even the "Flying ELVI" from the movie "HoneyMoon in Vegas" have a page. It's brief, with a view of the group after having jumped from a

plane, and has a page where you can request information on booking their performance. You'll find them at <http://www.flyingelvi.com/>.

There are pages put together by loyal fans, who've included photos and memoirs of visits to Graceland. One such site is "Elvis is still #1" at <http://www.neosoft.com/~kcderr/elvis/elvis.html>. The best way I found these pages, and so many more Elvis sites, was to use search engines. As usual, I found more sites than I could possibly visit and report on.

However, some of the more interesting, if not downright unusual, were fun to look at. There is the "Friz-Elvis" site at <http://www.nwlink.com/~timelvis/showroom.html>. Friz-Elvis is a Budgie (parakeet) in a wig, cape, jumpsuit and sunglasses. I couldn't tell if they were truthful in saying that he could sing songs, or if it was merely a tongue-in-cheek list of his tunes. Another unusual site was "Disgraceland: The Home of Tim Elvis" at <http://www.nwlink.com/~timelvis/index.html>. However, if you're a loyal Elvis fan, you'd better skip this one, or expect your blood pressure to get "All Shook Up." It is totally irreverent, and left me wondering, "Why?" (Why did I go there? Why is this guy doing this? Why am I writing about it?)

For a more serious look at Elvis, there's the official "Elvis Presley and Graceland Home Pages" at <http://www.elvis-presley.com/>. This site is somewhat commercial, encouraging visitors to actually come to Graceland, but it does offer some text and pictures in its Elvisology Pages, such as a Biography page, a Trivia page, an Elvis On Screen page, and a Gold & Platinum Records page. (I liked the photos here well enough to create wallpaper for my computer screen background.)

Want an Elvis screensaver for your computer? Go to "Super Screensavers" at <http://lesuper.com/screensaver/performers.html>, and you'll find one under "Performers & Musical Artists." Another site with text and pictures is "The Elvis Page," offered by the City of Memphis at <http://virtual.union.edu/~blomberb/elvis.html>. There is only one page at this URL. It contains very little text, but has a very nice color photograph of Elvis' final resting place at Graceland.

So the question comes back around: Am I an Elvis fan? I guess I really am now. You can't help but admire certain aspects of the man, such as his silky-smooth Southern drawl, his good looks, his love of his mother, his charisma, and, of course, his talent. After all, how can so many millions of fans be mistaken?

If you have comments or questions, please address them to: Terry, in care of The Chelsea Standard, 20750 Old U.S.-12, Chelsea, MI 48118.

M. L. CARPENTRY
"All Your Building & Remodeling Needs"

- Additions • New Homes • Kitchens • Family Rooms
- Bathrooms • Porches • Carpentry • Decks
- Garages • Roofs • Siding • Flooring

Specializing in Fire Restoration and Insurance Repair

Mark L. Dreyer, Owner Licensed & Insured General Contractor **475-0359**

Even his parents leased their new van from him!
Call Frank Waller at Palmer Ford Mercury for an Appointment Now! 475-1301

DAKIN'S
Yard-N-Garden Equipment, Inc.
517-784-3146
2524 LANSING AVE. JACKSON, MI 49202
Hours: M-F 8:00 - 5:30 • Sat. 8:00 - 1:00

SALES • SERVICE • PARTS • RENTALS

"Full Service Dealer"

Financing • Trades • Pickup • Delivery
Tractors • Mowers • Tillage • Chain Saws
• Snow Equipment

Simplifly
Club Cadet
Kubota
STIHL
WOODS
Lawn-Boy

Dexter grad promoted

Marine Pfc. Heather J. Shear, daughter of Brian F. Shear and Tassy Shear of Dexter, recently was promoted to her present rank while serving with headquarters and service battalion, Marine Corps Combat Development Center, Quantico, Va.

The 1994 graduate of Dexter High School joined the Marine Corps in January 1997.

Dexter Travel Service **We've Moved**

HOLIDAY GIFT CERTIFICATES

- AIRLINE & TRAIN TICKETS • CRUISES • TOURS •
- HOTEL & CAR RESERVATIONS •
- Business Travel Accounts Welcome!

(313) 426-8463
8089 Main St. • Dexter, MI
Mon., Thu & Fri. 9-6, Tue., Wed 9-5, Sat. 9:30-1

Plan now for your winter vacation!

N. Central Street
PRODUCE

Bulk Candies/Drygoods • Baked Goods
Fresh Fruits • Vegetables • Dairy Products
Featuring Chamberlain Bread

— 426-8519 —
Retail & Wholesale

3685 Central Street • Dexter • Adjacent to the Dexter Cider Mill
Mon.-Sat. 9:00 a.m.-8:30 p.m. • Sun. 9:00 a.m. to 5:00 p.m.

Happy New Year

Wishing you a Healthy Happy New Year

Winans Jewelry

We will be closed Dec. 31st-Jan. 2nd
Opened January 3rd from 9 a.m.-3 p.m.

SUBURBAN FORD DEALERS

OPEN SATURDAYS TO SERVE YOU BETTER

'Tis The Season for Holiday Savings...

LEASE A 98 FORD CONTOUR

INCLUDES \$750 RCL CASH ⁽¹⁾



24 Month Red Carpet Lease Capitalized Cost	For as low as \$15,428.93
First Month's Payment	\$ 212.42
Refundable Security Deposit	\$ 225.00
Down Payment (net of RCL cash)	\$ 1,632.00
Cash Due at Signing	\$ 2,069.42
\$00.15 / Mile Over 24,000 Miles	

212

A MONTH (1) WITH A 24 MONTH LOW MILEAGE RED CARPET LEASE

LEASE A 98 FORD EXPLORER



For as low as \$**297**

A MONTH (1) WITH A 24 MONTH LOW MILEAGE RED CARPET LEASE

24 Month Red Carpet Lease Capitalized Cost	\$26,672.02
First Month's Payment	\$ 296.70
Refundable Security Deposit	\$ 300.00
Down Payment	\$ 2,904.50
Cash Due at Signing	\$ 3,501.20
\$00.15 / Mile Over 24,000 Miles	

LEASE A 98 FORD WINDSTAR

INCLUDES \$1500 RCL CASH



24 Month Red Carpet Lease Capitalized Cost	For as low as \$22,914.10
First Month's Payment	\$ 302.01
Refundable Security Deposit	\$ 325.00
Down Payment (net of RCL cash)	\$ 2,461.50
Cash Due at Signing	\$ 3,088.51
\$00.15 / Mile Over 24,000 Miles	

302

THE RIGHT CHOICE

LEASE A 98 FORD ESCORT

INCLUDES \$1000 RCL CASH ⁽¹⁾



For as low as \$**205**

A MONTH (1) WITH A 24 MONTH LOW MILEAGE RED CARPET LEASE

24 Month Red Carpet Lease Capitalized Cost	\$13,350.13
First Month's Payment	\$ 204.79
Refundable Security Deposit	\$ 225.00
Down Payment (net of RCL cash)	\$ 1,381.00
Cash Due at Signing	\$ 1,810.79
\$00.15 / Mile Over 24,000 Miles	

(1)98 Contour SE, MSRP of \$16,320, 98 Explorer w/PEP 945A, MSRP of \$29,045, 98 Windstar GL w/PEP 473B, MSRP of \$24,615, 98 Escort SE, MSRP of \$13,810, Title, Tax, and other Fees extra. Lease payment based on average capitalized cost of 94.54% of MSRP (Contour) and 91.83% of MSRP (Explorer), 93.09% of MSRP (Windstar) and 96.67% of MSRP (Escort) excluding tax, title and license fee, for 24-month closed-end Ford Credit Red Carpet leases purchased in the Detroit Region through 11/30/97. Lessee responsible for excess wear/tear. For special lease terms and RCL cash, take new retail delivery from dealer stock by 1/5/98. RCL Cash may be taken in cash, but is used towards down payment in examples shown. See dealer for complete details.

PALMER

Ford
CHELSEA
222 S. Main
313-475-1301